



# Autostrada dei Fiori


Tronco A10: Savona - Ventimiglia (confine francese)

Adempimenti ai sensi del D.Lgs. 19 agosto 2005, n. 194  
"Attuazione della Direttiva 2002/49/CE relativa alla  
determinazione e alla gestione del rumore ambientale"

CODICE UNIVOCO INFRASTRUTTURA (UNIQUE ROAD ID): IT\_A\_RD\_0016001


## PIANO D'AZIONE 2018 - 2022

ALLEGATO 06 Schede di sintesi comunale

 Dott. Ing. Dorina Spoglianti Ordine degli Ingegneri di Milano n° A20953 	<b>CONSULENTE/ALTRO</b> 	<b>IMPRESA</b>	<b>COMMITTENTE</b>  Autostrada dei Fiori S.p.A. Direzione e Coordinamento: S.A.L.T. S.p.A. Via della Repubblica, 46 18100 Imperia (IM)
---	--	----------------	---

REV.	DATA	DESCRIZIONE	REDATTO	CONTR.	APPROV.	RIESAME	DATA	SCALA
							18.07.2018	-
							N. Progr. <b>7</b>	
A	18.07.2018	PRIMA EMISSIONE	SINA	SINA	SINA	DT		

<b>CODIFICA</b> PROGETTO    LIV    TRONCO    DOCUMENTO    REV P3000    V    A10    ACU SH 001    A						<b>WBS</b> A101BMXXXXX
						<b>CUP</b> - - - - -

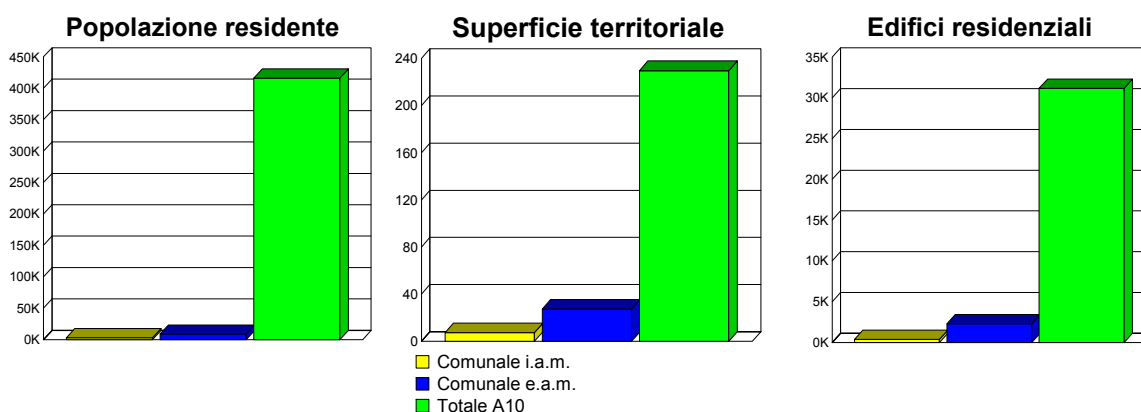
<b>RESPONSABILE DEL PROCEDIMENTO</b>	<b>VISTO DELLA COMMITTENTE</b>   <b>Autostrada dei Fiori S.p.A.</b> Il Direttore Tecnico Ing. Maurizio Deiana
--------------------------------------	---



## COMUNE DI FINALE LIGURE

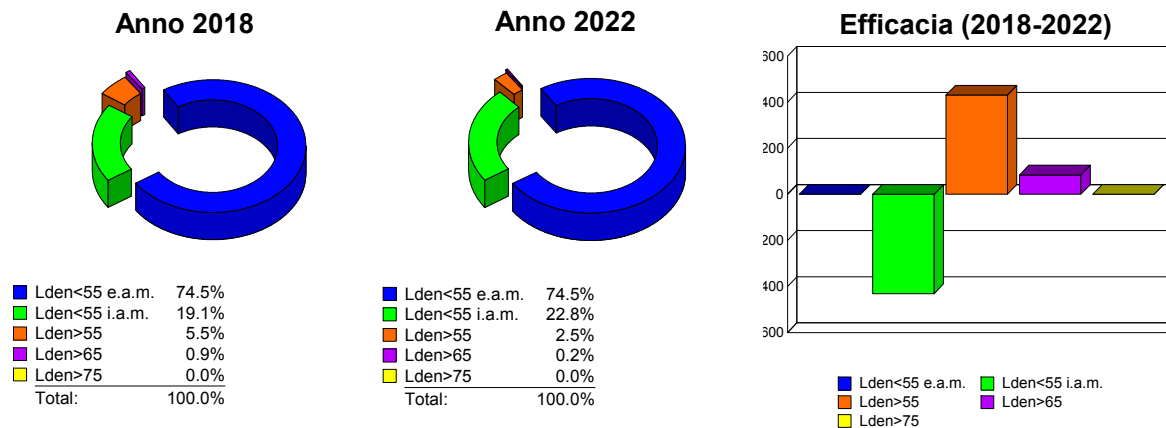
### Sintesi Territoriale

	Territorio comunale Interno ambito di mappatura	Territorio comunale Esterno ambito di mappatura	Autostrada Interno ambito di mappatura
<b>Popolazione residente</b>	2995	8746	416433
<b>Superficie territoriale [km2]</b>	7.330	27.342	229.662
<b>Edifici residenziali</b>	379	2311	31160



### Efficacia del piano d'azione

Popolazione Esposta	Lden < 55 Esterno a.m.	Lden < 55 Interno a.m.	Lden > 55	Lden > 65	Lden > 75
<b>Anno 2018</b>	8746	2248	747	105	0
<b>Anno 2022</b>	8746	2679	316	21	0
<b>Efficacia (2018-2022)</b>	-	-431	431	84	0

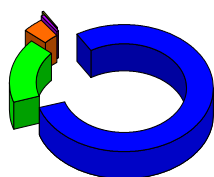




### COMUNE DI FINALE LIGURE

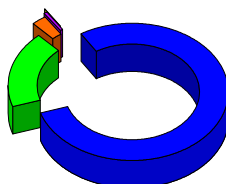
<i>Superficie Territoriale</i>	Lden < 55 Esterno a.m.	Lden < 55 Interno a.m.	Lden > 55	Lden > 65	Lden > 75
<b>Anno 2018</b>	27.342	5.719	1.611	0.301	0.065
<b>Anno 2022</b>	27.342	6.260	1.070	0.179	0.046
<b>Efficacia (2018-2022)</b>	0	-0.541	0.541	0.122	0.019

**Anno 2018**



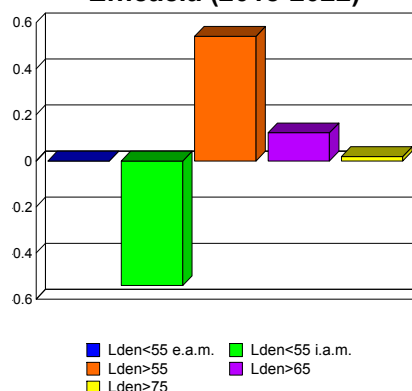
Lden<55 e.a.m.	78.9%
Lden<55 i.a.m.	16.5%
Lden>55	3.8%
Lden>65	0.7%
Lden>75	0.2%
<b>Total:</b>	<b>100.0%</b>

**Anno 2022**



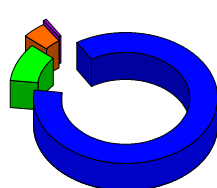
Lden<55 e.a.m.	78.9%
Lden<55 i.a.m.	18.1%
Lden>55	2.6%
Lden>65	0.4%
Lden>75	0.1%
<b>Total:</b>	<b>100.0%</b>

**Efficacia (2018-2022)**



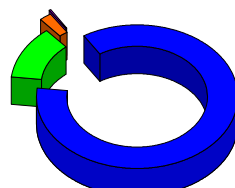
<i>Edifici Residenziali</i>	Lden < 55 Esterno a.m.	Lden < 55 Interno a.m.	Lden > 55	Lden > 65	Lden > 75
<b>Anno 2018</b>	2311	255	124	15	0
<b>Anno 2022</b>	2311	322	57	6	0
<b>Efficacia (2018-2022)</b>	0	-67	67	9	0

**Anno 2018**



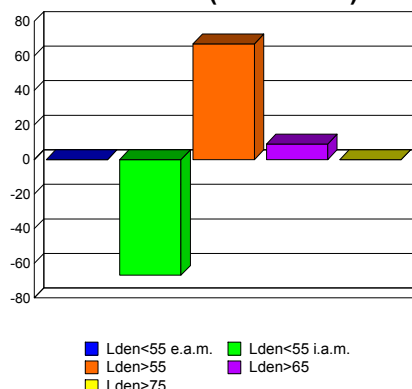
Lden<55 e.a.m.	85.9%
Lden<55 i.a.m.	9.5%
Lden>55	4.1%
Lden>65	0.6%
Lden>75	0.0%
<b>Total:</b>	<b>100.0%</b>

**Anno 2022**



Lden<55 e.a.m.	85.9%
Lden<55 i.a.m.	12.0%
Lden>55	1.9%
Lden>65	0.2%
Lden>75	0.0%
<b>Total:</b>	<b>100.0%</b>

**Efficacia (2018-2022)**

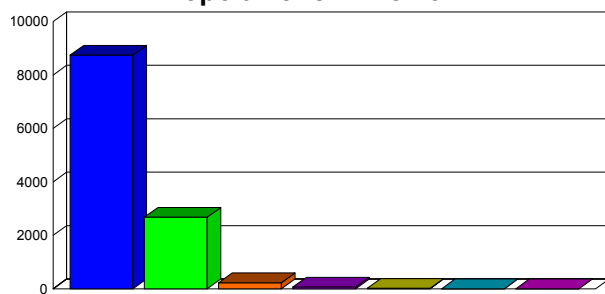




### COMUNE DI FINALE LIGURE

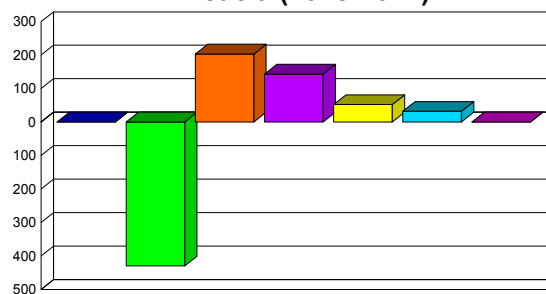
<i>Popolazione esposta per classi di Lden</i>	Lden < 55 Esterno a.m.	Lden < 55 Interno a.m.	55-59	60-64	65-69	70-75	>75
<b>Anno 2018</b>	8746	2249	432	209	72	33	0
<b>Anno 2022</b>	8746	2679	229	66	20	1	0
<b>Efficacia (2018-2022)</b>	-	-430	203	143	52	32	0

**Popolazione Anno 2022**



- Lden<55 e.a.m.
- Lden<55 i.a.m.
- 55-59
- 60-64
- 65-69
- 70-75
- >75

**Efficacia (2018-2022)**



- Lden<55 e.a.m.
- Lden<55 i.a.m.
- 55-59
- 60-64
- 65-69
- 70-75
- >75

<i>Popolazione in edifici con facciate silenziose</i>	55-59	60-64	65-69	70-75	>75
<b>Anno 2018</b>	0	0	0	0	0
<b>Anno 2022</b>	0	0	0	0	0
<b>Efficacia (2018-2022)</b>	0	0	0	0	0

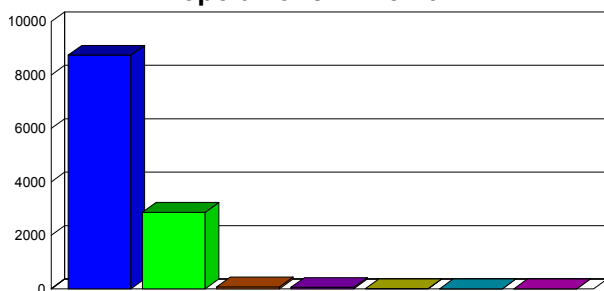
<i>Popolazione in edifici con insonorizzazione</i>	55-59	60-64	65-69	70-75	>75
<b>Anno 2018</b>	0	0	0	0	0
<b>Anno 2022</b>	0	0	0	0	0
<b>Efficacia (2018-2022)</b>	0	0	0	0	0



## COMUNE DI FINALE LIGURE

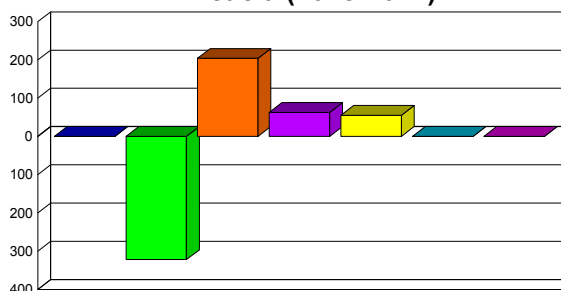
<i>Popolazione esposta per classi di Lnight</i>	Lnight < 50 Esterno a.m.	Lnight < 50 Interno a.m.	50-54	55-59	60-64	65-69	>70
Anno 2018	8746	2539	278	116	61	1	0
Anno 2022	8746	2861	74	53	6	1	0
Efficacia (2018-2022)	-	-322	204	63	55	0	0

**Popolazione Anno 2022**



■ Lnight<50 e.a.m. ■ Lnight<50 i.a.m. ■ 50-54  
 ■ 55-59 ■ 60-64 ■ 65-69  
 ■ >70

**Efficacia (2018-2022)**



■ Lnight<50 e.a.m. ■ Lnight<50 i.a.m. ■ 50-54  
 ■ 55-59 ■ 60-64 ■ 65-69  
 ■ >70

**Popolazione in edifici con facciate silenziose**

	50-54	55-59	60-64	65-69	>70
Anno 2018	0	4	0	0	0
Anno 2022	0	14	0	0	0
Efficacia (2018-2022)	0	-10	0	0	0

**Popolazione in edifici con insonorizzazione**

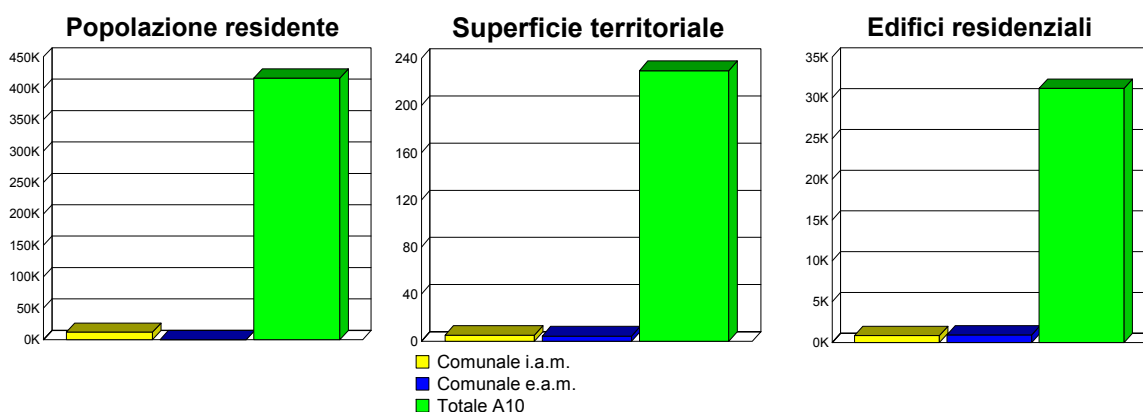
	50-54	55-59	60-64	65-69	>70
Anno 2018	0	0	0	0	0
Anno 2022	0	0	0	0	0
Efficacia (2018-2022)	0	0	0	0	0



## COMUNE DI PIETRA LIGURE

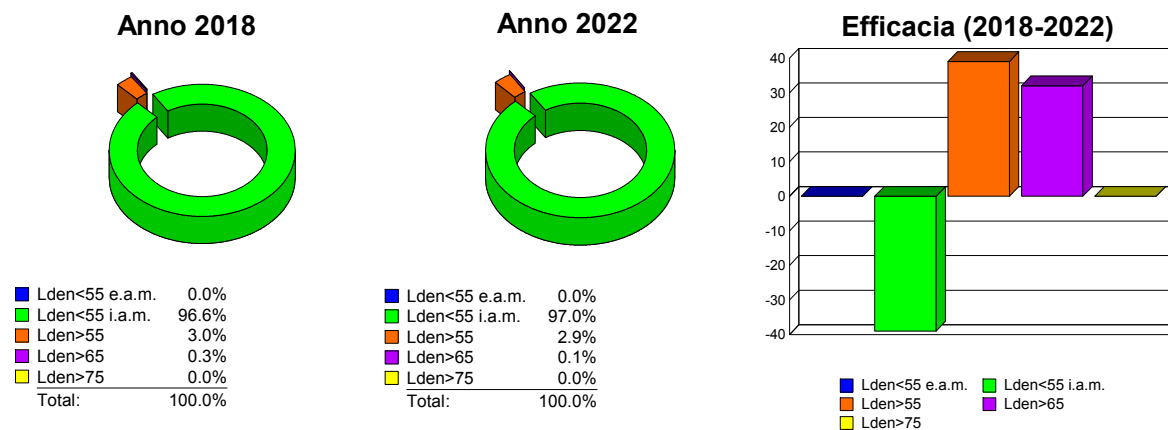
### Sintesi Territoriale

	Territorio comunale Interno ambito di mappatura	Territorio comunale Esterno ambito di mappatura	Autostrada Interno ambito di mappatura
<b>Popolazione residente</b>	11820	-	416433
<b>Superficie territoriale [km2]</b>	5.182	4.484	229.662
<b>Edifici residenziali</b>	841	930	31160



### Efficacia del piano d'azione

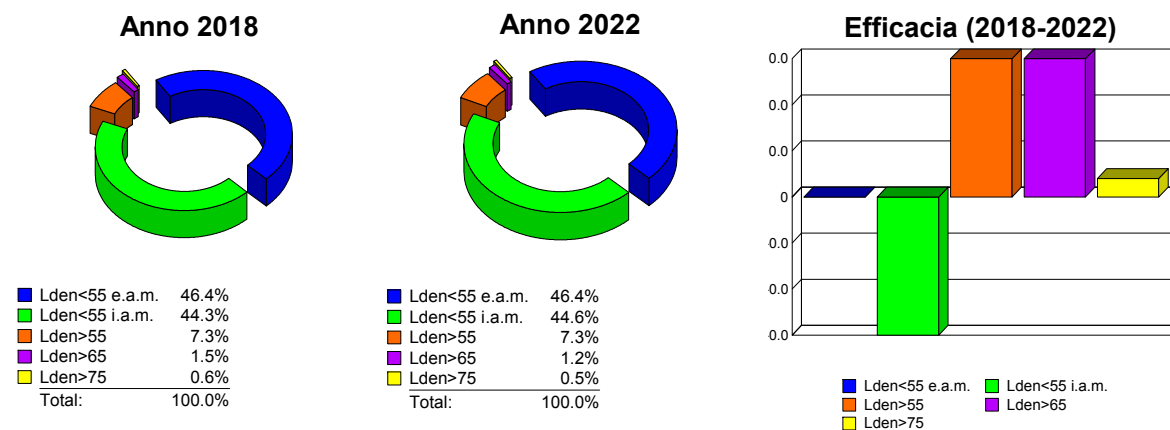
Popolazione Esposta	Lden < 55 Esterno a.m.	Lden < 55 Interno a.m.	Lden > 55	Lden > 65	Lden > 75
<b>Anno 2018</b>	-	11424	396	41	0
<b>Anno 2022</b>	-	11463	357	9	0
<b>Efficacia (2018-2022)</b>	-	-39	39	32	0



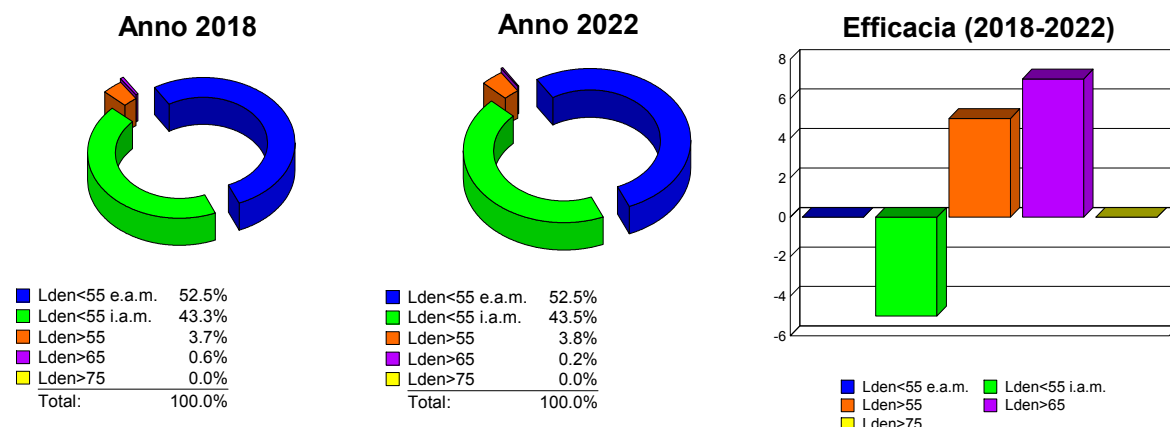


### COMUNE DI PIETRA LIGURE

<i>Superficie Territoriale</i>	Lden < 55 Esterno a.m.	Lden < 55 Interno a.m.	Lden > 55	Lden > 65	Lden > 75
Anno 2018	4.484	4.281	0.901	0.195	0.054
Anno 2022	4.484	4.311	0.871	0.165	0.050
Efficacia (2018-2022)	0	-0.030	0.030	0.030	0.004



<i>Edifici Residenziali</i>	Lden < 55 Esterno a.m.	Lden < 55 Interno a.m.	Lden > 55	Lden > 65	Lden > 75
Anno 2018	930	766	75	10	0
Anno 2022	930	771	70	3	0
Efficacia (2018-2022)	0	-5	5	7	0

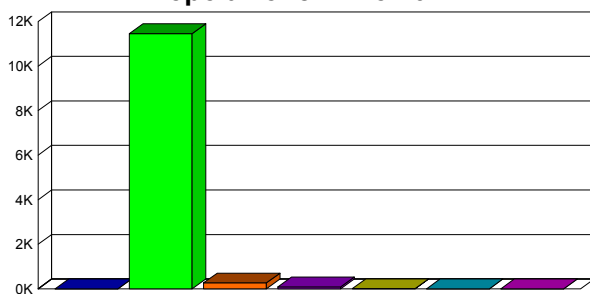




## COMUNE DI PIETRA LIGURE

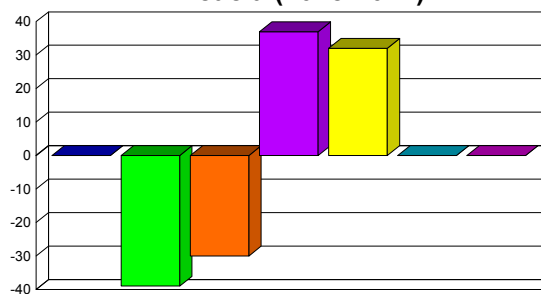
<i>Popolazione esposta per classi di Lden</i>	Lden < 55 Esterno a.m.	Lden < 55 Interno a.m.	55-59	60-64	65-69	70-75	>75
<b>Anno 2018</b>	-	11424	235	120	41	0	0
<b>Anno 2022</b>	-	11463	265	83	9	0	0
<b>Efficacia (2018-2022)</b>	-	-39	-30	37	32	0	0

**Popolazione Anno 2022**



■ Lden<55 e.a.m. ■ Lden<55 i.a.m. ■ 55-59  
 ■ 60-64 ■ 65-69 ■ 70-75  
 ■ >75

**Efficacia (2018-2022)**



■ Lden<55 e.a.m. ■ Lden<55 i.a.m. ■ 55-59  
 ■ 60-64 ■ 65-69 ■ 70-75  
 ■ >75

<i>Popolazione in edifici con facciate silenziose</i>	55-59	60-64	65-69	70-75	>75
<b>Anno 2018</b>	0	0	0	0	0
<b>Anno 2022</b>	0	0	0	0	0
<b>Efficacia (2018-2022)</b>	0	0	0	0	0

<i>Popolazione in edifici con insonorizzazione</i>	55-59	60-64	65-69	70-75	>75
<b>Anno 2018</b>	16	14	0	0	0
<b>Anno 2022</b>	30	0	0	0	0
<b>Efficacia (2018-2022)</b>	-14	14	0	0	0

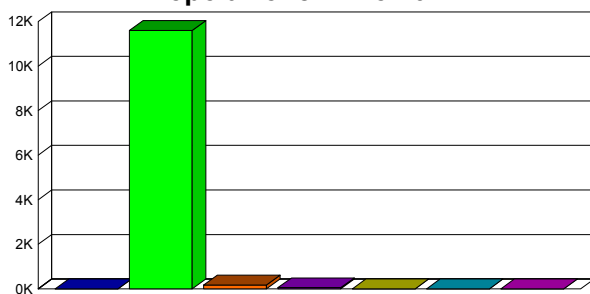




## COMUNE DI PIETRA LIGURE

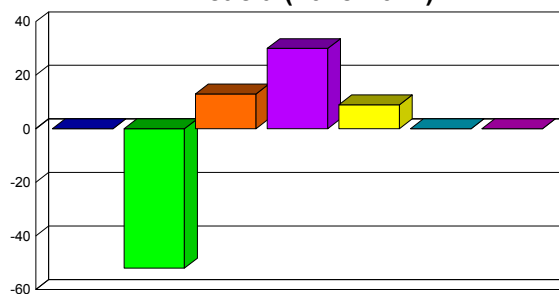
<i>Popolazione esposta per classi di Lnight</i>	Lnight < 50 Esterno a.m.	Lnight < 50 Interno a.m.	50-54	55-59	60-64	65-69	>70
Anno 2018	-	11549	184	78	9	0	0
Anno 2022	-	11601	171	48	0	0	0
Efficacia (2018-2022)	-	-52	13	30	9	0	0

**Popolazione Anno 2022**



■ Lnight<50 e.a.m.    ■ Lnight<50 i.a.m.    ■ 50-54  
■ 55-59    ■ 60-64    ■ 65-69  
■ >70

**Efficacia (2018-2022)**



■ Lnight<50 e.a.m.    ■ Lnight<50 i.a.m.    ■ 50-54  
■ 55-59    ■ 60-64    ■ 65-69  
■ >70

**Popolazione in edifici con facciate silenziose**

	50-54	55-59	60-64	65-69	>70
Anno 2018	7	10	0	0	0
Anno 2022	0	0	0	0	0
Efficacia (2018-2022)	7	10	0	0	0

**Popolazione in edifici con insonorizzazione**

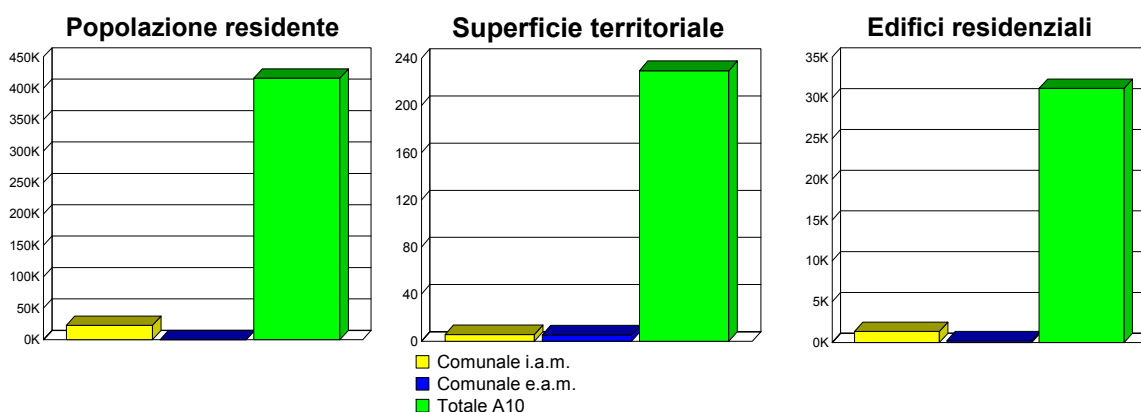
	50-54	55-59	60-64	65-69	>70
Anno 2018	24	0	0	0	0
Anno 2022	15	0	0	0	0
Efficacia (2018-2022)	9	0	0	0	0



## COMUNE DI CERIALE

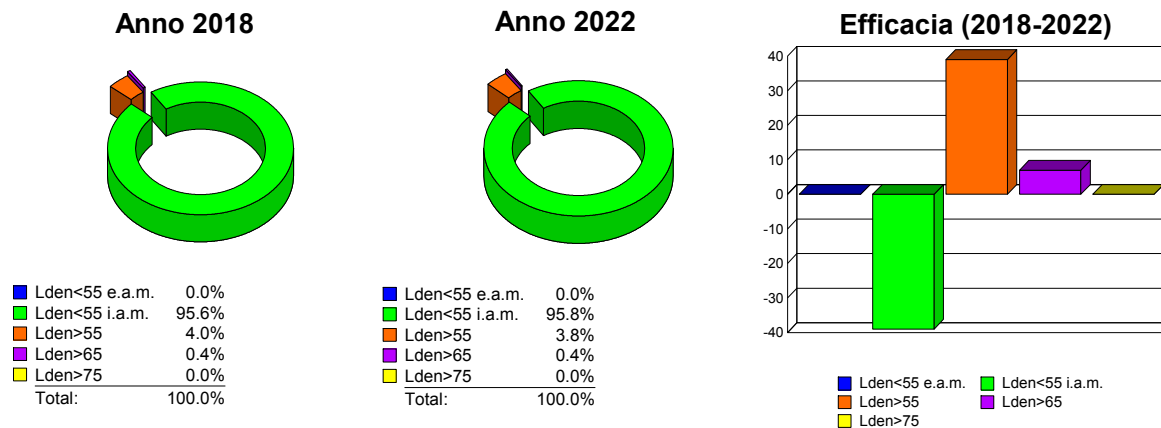
### Sintesi Territoriale

	Territorio comunale Interno ambito di mappatura	Territorio comunale Esterno ambito di mappatura	Autostrada Interno ambito di mappatura
Popolazione residente	22603	-	416433
Superficie territoriale [km2]	5.634	5.510	229.662
Edifici residenziali	1369	225	31160



### Efficacia del piano d'azione

Popolazione Esposta	Lden < 55 Esterno a.m.	Lden < 55 Interno a.m.	Lden > 55	Lden > 65	Lden > 75
Anno 2018	-	21605	998	98	0
Anno 2022	-	21644	959	91	0
Efficacia (2018-2022)	-	-39	39	7	0

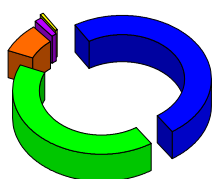




### COMUNE DI CERIALE

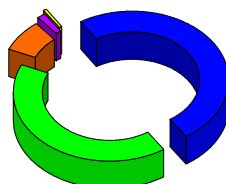
<i>Superficie Territoriale</i>	Lden < 55 Esterno a.m.	Lden < 55 Interno a.m.	Lden > 55	Lden > 65	Lden > 75
<b>Anno 2018</b>	5.510	4.580	1.054	0.224	0.074
<b>Anno 2022</b>	5.510	4.589	1.045	0.217	0.075
<b>Efficacia (2018-2022)</b>	0	-0.009	0.009	0.007	-0.001

**Anno 2018**



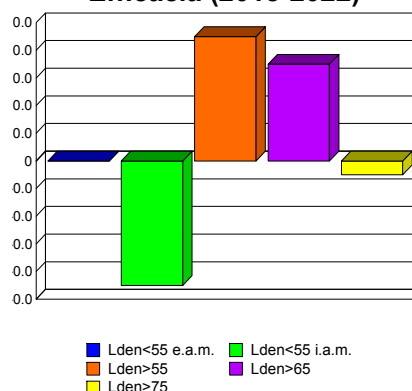
Lden<55 e.a.m.	49.4%
Lden<55 i.a.m.	41.1%
Lden>55	7.4%
Lden>65	1.3%
Lden>75	0.7%
<b>Total:</b>	<b>100.0%</b>

**Anno 2022**



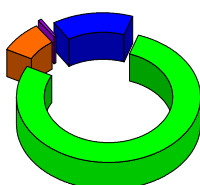
Lden<55 e.a.m.	49.4%
Lden<55 i.a.m.	41.2%
Lden>55	7.4%
Lden>65	1.3%
Lden>75	0.7%
<b>Total:</b>	<b>100.0%</b>

**Efficacia (2018-2022)**



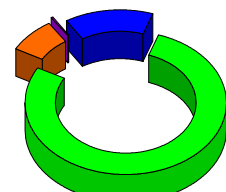
<i>Edifici Residenziali</i>	Lden < 55 Esterno a.m.	Lden < 55 Interno a.m.	Lden > 55	Lden > 65	Lden > 75
<b>Anno 2018</b>	225	1236	133	9	0
<b>Anno 2022</b>	225	1241	128	4	0
<b>Efficacia (2018-2022)</b>	0	-5	5	5	0

**Anno 2018**



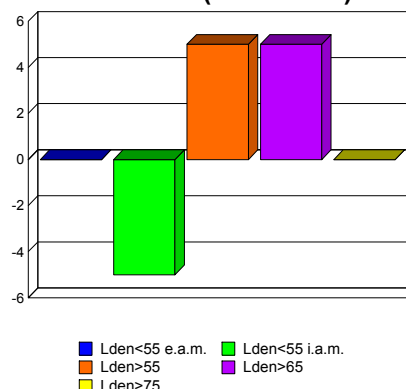
Lden<55 e.a.m.	14.1%
Lden<55 i.a.m.	77.5%
Lden>55	7.8%
Lden>65	0.6%
Lden>75	0.0%
<b>Total:</b>	<b>100.0%</b>

**Anno 2022**



Lden<55 e.a.m.	14.1%
Lden<55 i.a.m.	77.9%
Lden>55	7.8%
Lden>65	0.3%
Lden>75	0.0%
<b>Total:</b>	<b>100.0%</b>

**Efficacia (2018-2022)**

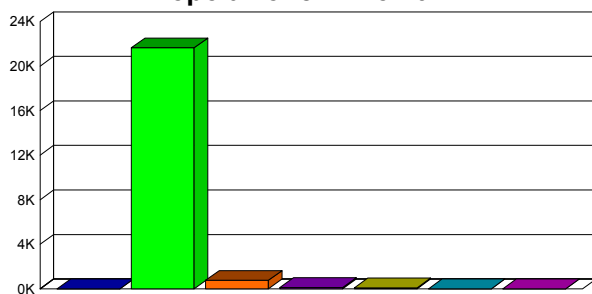




### COMUNE DI CERIALE

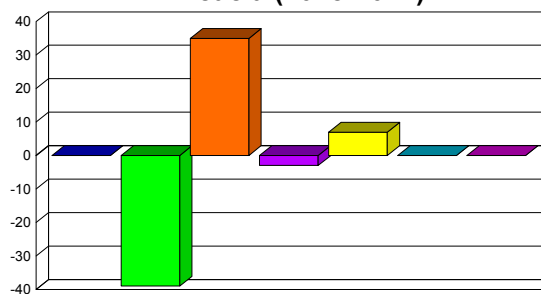
<i>Popolazione esposta per classi di Lden</i>	Lden < 55 Esterno a.m.	Lden < 55 Interno a.m.	55-59	60-64	65-69	70-75	>75
<b>Anno 2018</b>	-	21605	792	108	98	0	0
<b>Anno 2022</b>	-	21644	757	111	91	0	0
<b>Efficacia (2018-2022)</b>	-	-39	35	-3	7	0	0

**Popolazione Anno 2022**



- Lden<55 e.a.m.
- Lden<55 i.a.m.
- 55-59
- 60-64
- 65-69
- 70-75
- >75

**Efficacia (2018-2022)**



- Lden<55 e.a.m.
- Lden<55 i.a.m.
- 55-59
- 60-64
- 65-69
- 70-75
- >75

<i>Popolazione in edifici con facciate silenziose</i>	55-59	60-64	65-69	70-75	>75
<b>Anno 2018</b>	0	0	0	0	0
<b>Anno 2022</b>	0	0	0	0	0
<b>Efficacia (2018-2022)</b>	0	0	0	0	0

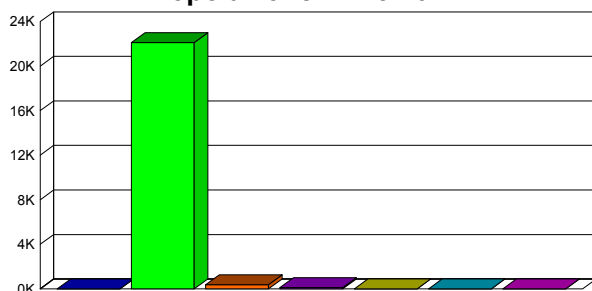
<i>Popolazione in edifici con insonorizzazione</i>	55-59	60-64	65-69	70-75	>75
<b>Anno 2018</b>	0	0	0	0	0
<b>Anno 2022</b>	0	0	0	0	0
<b>Efficacia (2018-2022)</b>	0	0	0	0	0



## COMUNE DI CERIALE

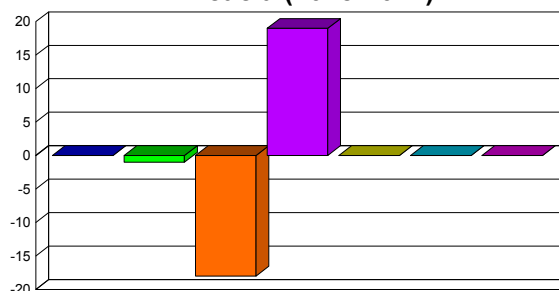
<i>Popolazione esposta per classi di Lnight</i>	Lnight < 50 Esterno a.m.	Lnight < 50 Interno a.m.	50-54	55-59	60-64	65-69	>70
Anno 2018	-	22117	353	133	0	0	0
Anno 2022	-	22118	371	114	0	0	0
Efficacia (2018-2022)	-	-1	-18	19	0	0	0

**Popolazione Anno 2022**



■ Lnight<50 e.a.m.    ■ Lnight<50 i.a.m.    ■ 50-54  
■ 55-59    ■ 60-64    ■ 65-69  
■ >70

**Efficacia (2018-2022)**



■ Lnight<50 e.a.m.    ■ Lnight<50 i.a.m.    ■ 50-54  
■ 55-59    ■ 60-64    ■ 65-69  
■ >70

**Popolazione in edifici con facciate silenziose**

	50-54	55-59	60-64	65-69	>70
Anno 2018	0	0	0	0	0
Anno 2022	0	0	0	0	0
Efficacia (2018-2022)	0	0	0	0	0

**Popolazione in edifici con insonorizzazione**

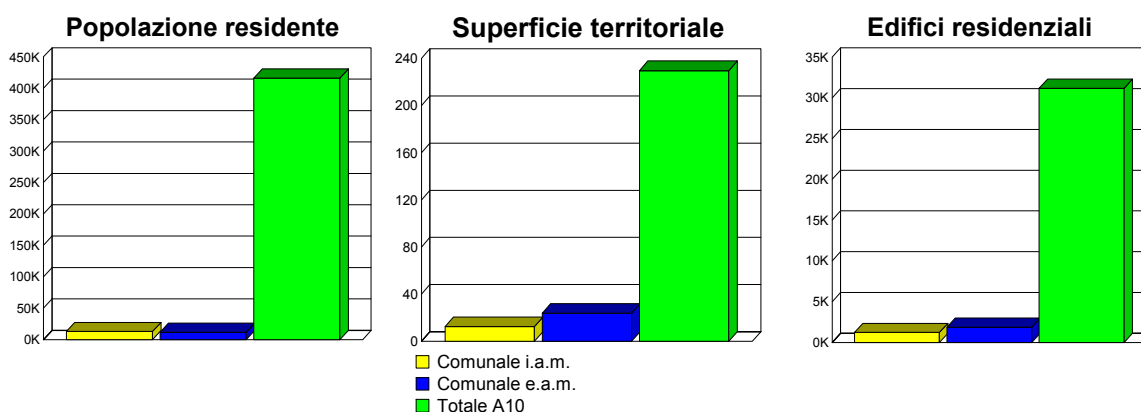
	50-54	55-59	60-64	65-69	>70
Anno 2018	0	0	0	0	0
Anno 2022	0	0	0	0	0
Efficacia (2018-2022)	0	0	0	0	0



## COMUNE DI ALBENGA

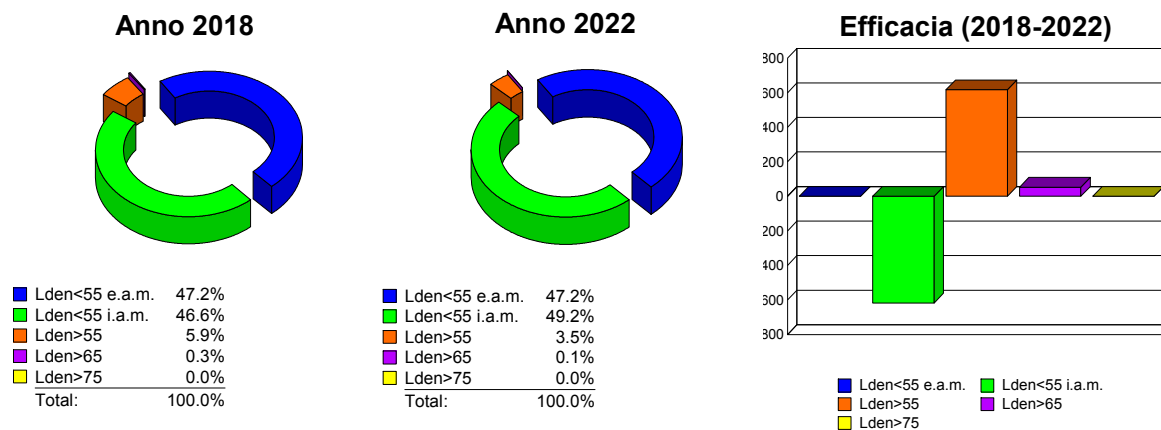
### Sintesi Territoriale

	Territorio comunale Interno ambito di mappatura	Territorio comunale Esterno ambito di mappatura	Autostrada Interno ambito di mappatura
Popolazione residente	12742	11402	416433
Superficie territoriale [km2]	12.488	23.950	229.662
Edifici residenziali	1224	1864	31160



### Efficacia del piano d'azione

Popolazione Esposta	Lden < 55 Esterno a.m.	Lden < 55 Interno a.m.	Lden > 55	Lden > 65	Lden > 75
Anno 2018	11402	11256	1486	72	0
Anno 2022	11402	11873	869	19	0
Efficacia (2018-2022)	-	-617	617	53	0

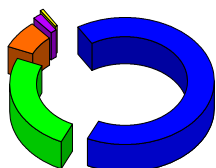




## COMUNE DI ALBENGA

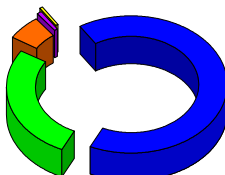
<i>Superficie Territoriale</i>	Lden < 55 Esterno a.m.	Lden < 55 Interno a.m.	Lden > 55	Lden > 65	Lden > 75
Anno 2018	23.950	9.049	3.439	0.775	0.191
Anno 2022	23.950	9.813	2.675	0.524	0.167
Efficacia (2018-2022)	0	-0.764	0.764	0.251	0.024

Anno 2018



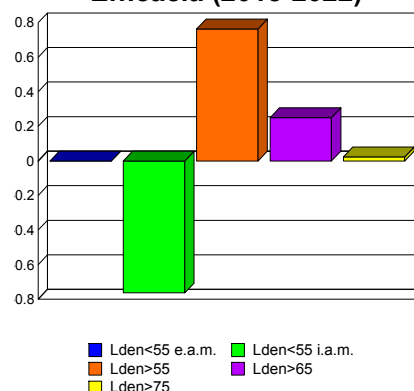
Lden<55 e.a.m.	65.7%
Lden<55 i.a.m.	24.8%
Lden>55	7.3%
Lden>65	1.6%
Lden>75	0.5%
Total:	100.0%

Anno 2022



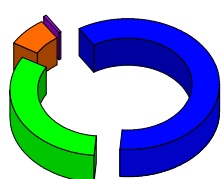
Lden<55 e.a.m.	65.7%
Lden<55 i.a.m.	26.9%
Lden>55	5.9%
Lden>65	1.0%
Lden>75	0.5%
Total:	100.0%

Efficacia (2018-2022)



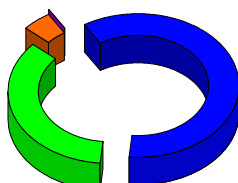
<i>Edifici Residenziali</i>	Lden < 55 Esterno a.m.	Lden < 55 Interno a.m.	Lden > 55	Lden > 65	Lden > 75
Anno 2018	1864	980	244	14	0
Anno 2022	1864	1074	150	4	0
Efficacia (2018-2022)	0	-94	94	10	0

Anno 2018



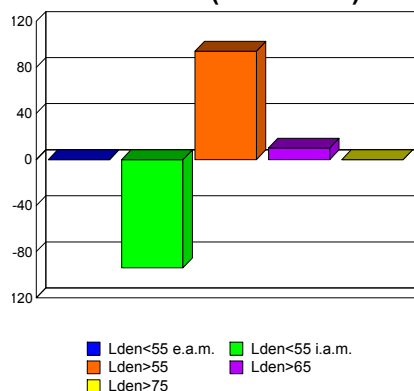
Lden<55 e.a.m.	60.4%
Lden<55 i.a.m.	31.7%
Lden>55	7.4%
Lden>65	0.5%
Lden>75	0.0%
Total:	100.0%

Anno 2022



Lden<55 e.a.m.	60.4%
Lden<55 i.a.m.	34.8%
Lden>55	4.7%
Lden>65	0.1%
Lden>75	0.0%
Total:	100.0%

Efficacia (2018-2022)

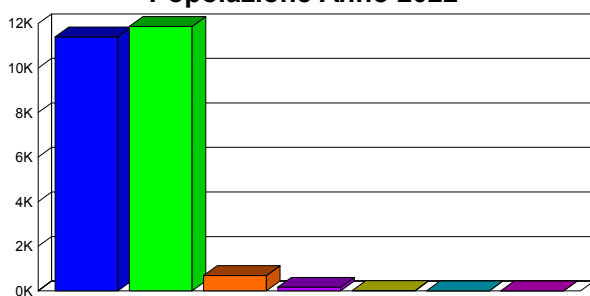




## COMUNE DI ALBENGA

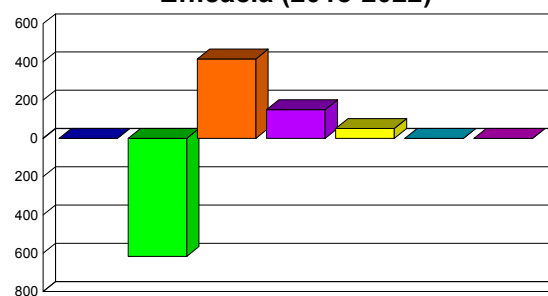
<i>Popolazione esposta per classi di Lden</i>	Lden < 55 Esterno a.m.	Lden < 55 Interno a.m.	55-59	60-64	65-69	70-75	>75
<b>Anno 2018</b>	11402	11256	1099	316	68	3	0
<b>Anno 2022</b>	11402	11873	684	166	16	3	0
<b>Efficacia (2018-2022)</b>	-	-617	415	150	52	0	0

**Popolazione Anno 2022**



■ Lden<55 e.a.m. ■ Lden<55 i.a.m. ■ 55-59  
 ■ 60-64 ■ 65-69 ■ 70-75  
 ■ >75

**Efficacia (2018-2022)**



■ Lden<55 e.a.m. ■ Lden<55 i.a.m. ■ 55-59  
 ■ 60-64 ■ 65-69 ■ 70-75  
 ■ >75

<i>Popolazione in edifici con facciate silenziose</i>	55-59	60-64	65-69	70-75	>75
<b>Anno 2018</b>	0	0	0	0	0
<b>Anno 2022</b>	0	0	0	0	0
<b>Efficacia (2018-2022)</b>	0	0	0	0	0

<i>Popolazione in edifici con insonorizzazione</i>	55-59	60-64	65-69	70-75	>75
<b>Anno 2018</b>	0	0	0	0	0
<b>Anno 2022</b>	0	0	0	0	0
<b>Efficacia (2018-2022)</b>	0	0	0	0	0

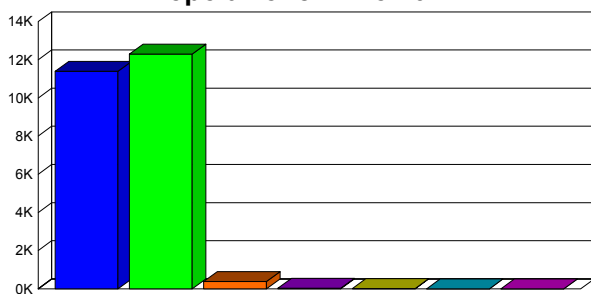




## COMUNE DI ALBENGA

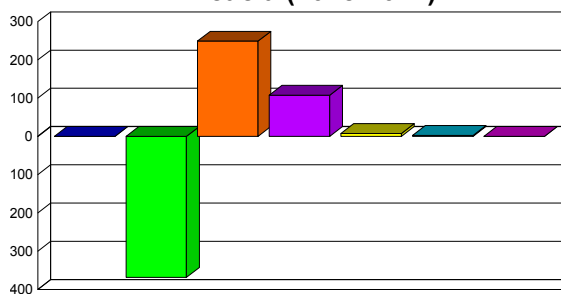
<i>Popolazione esposta per classi di Lnight</i>	Lnight < 50 Esterno a.m.	Lnight < 50 Interno a.m.	50-54	55-59	60-64	65-69	>70
Anno 2018	11402	11935	636	142	26	3	0
Anno 2022	11402	12303	387	34	18	0	0
Efficacia (2018-2022)	-	-368	249	108	8	3	0

**Popolazione Anno 2022**



■ Lnight<50 e.a.m. ■ Lnight<50 i.a.m. ■ 50-54  
 ■ 55-59 ■ 60-64 ■ 65-69  
 ■ >70

**Efficacia (2018-2022)**



■ Lnight<50 e.a.m. ■ Lnight<50 i.a.m. ■ 50-54  
 ■ 55-59 ■ 60-64 ■ 65-69  
 ■ >70

**Popolazione in edifici con facciate silenziose**

	50-54	55-59	60-64	65-69	>70
Anno 2018	0	0	0	0	0
Anno 2022	0	0	0	0	0
Efficacia (2018-2022)	0	0	0	0	0

**Popolazione in edifici con insonorizzazione**

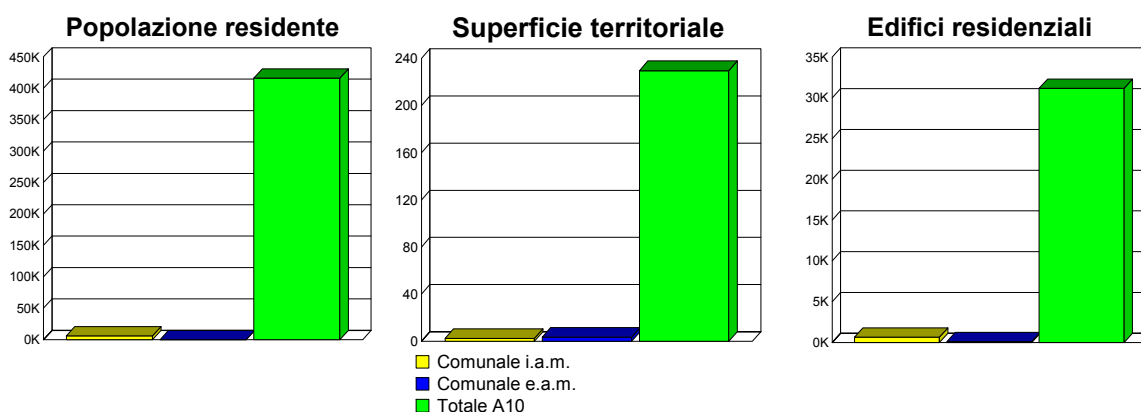
	50-54	55-59	60-64	65-69	>70
Anno 2018	0	0	0	0	0
Anno 2022	0	0	0	0	0
Efficacia (2018-2022)	0	0	0	0	0



## COMUNE DI DIANO CASTELLO

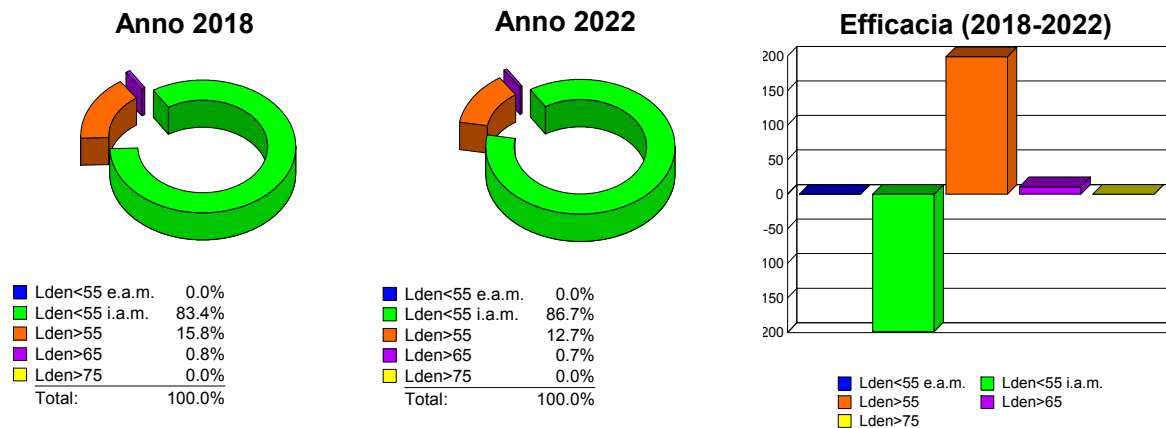
### Sintesi Territoriale

	Territorio comunale Interno ambito di mappatura	Territorio comunale Esterno ambito di mappatura	Autostrada Interno ambito di mappatura
<b>Popolazione residente</b>	5989	-	416433
<b>Superficie territoriale [km2]</b>	2.453	3.529	229.662
<b>Edifici residenziali</b>	644	96	31160



### Efficacia del piano d'azione

Popolazione Esposta	Lden < 55 Esterno a.m.	Lden < 55 Interno a.m.	Lden > 55	Lden > 65	Lden > 75
Anno 2018	-	4993	996	50	0
Anno 2022	-	5192	797	39	0
Efficacia (2018-2022)	-	-199	199	11	0

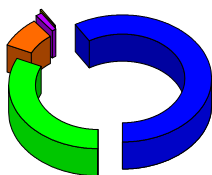




## COMUNE DI DIANO CASTELLO

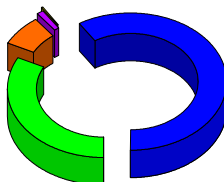
<i>Superficie Territoriale</i>	Lden < 55 Esterno a.m.	Lden < 55 Interno a.m.	Lden > 55	Lden > 65	Lden > 75
Anno 2018	3.529	1.904	0.549	0.085	0.023
Anno 2022	3.529	1.946	0.507	0.075	0.022
Efficacia (2018-2022)	0	-0.042	0.042	0.010	0.001

Anno 2018



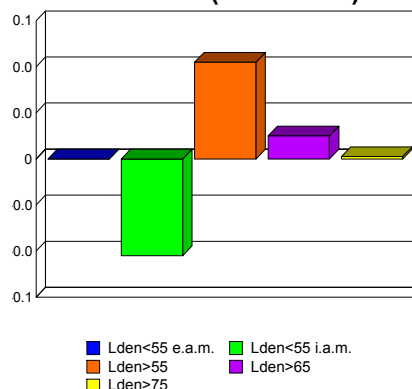
Lden<55 e.a.m.	59.0%
Lden<55 i.a.m.	31.8%
Lden>55	7.8%
Lden>65	1.0%
Lden>75	0.4%
Total:	100.0%

Anno 2022



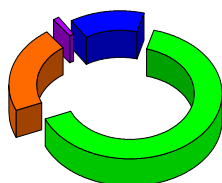
Lden<55 e.a.m.	59.0%
Lden<55 i.a.m.	32.5%
Lden>55	7.2%
Lden>65	0.9%
Lden>75	0.4%
Total:	100.0%

Efficacia (2018-2022)



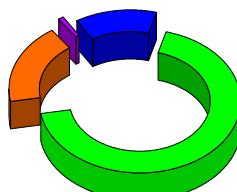
<i>Edifici Residenziali</i>	Lden < 55 Esterno a.m.	Lden < 55 Interno a.m.	Lden > 55	Lden > 65	Lden > 75
Anno 2018	96	478	166	9	0
Anno 2022	96	505	139	7	0
Efficacia (2018-2022)	0	-27	27	2	0

Anno 2018



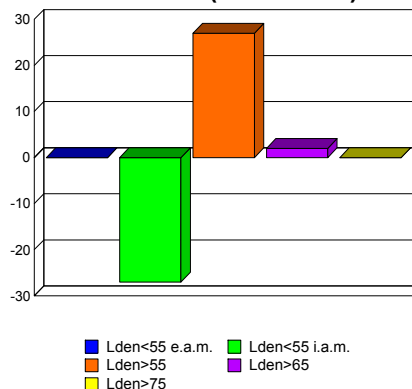
Lden<55 e.a.m.	13.0%
Lden<55 i.a.m.	64.6%
Lden>55	21.2%
Lden>65	1.2%
Lden>75	0.0%
Total:	100.0%

Anno 2022



Lden<55 e.a.m.	13.0%
Lden<55 i.a.m.	68.2%
Lden>55	17.8%
Lden>65	0.9%
Lden>75	0.0%
Total:	100.0%

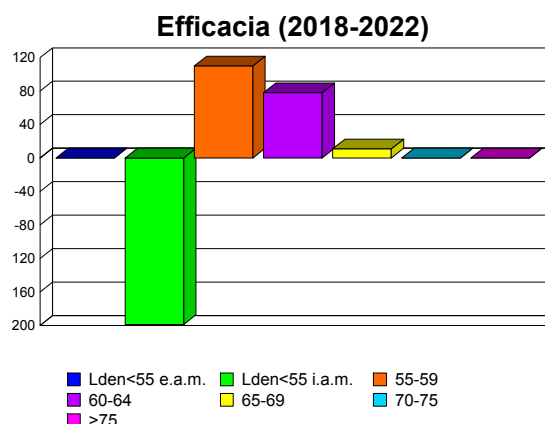
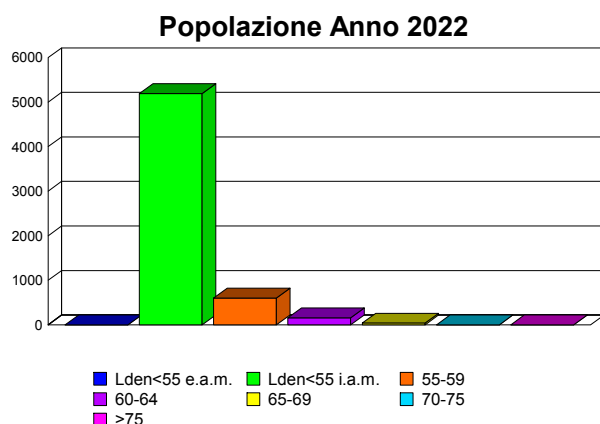
Efficacia (2018-2022)





### COMUNE DI DIANO CASTELLO

<i>Popolazione esposta per classi di Lden</i>	Lden < 55 Esterno a.m.	Lden < 55 Interno a.m.	55-59	60-64	65-69	70-75	>75
<b>Anno 2018</b>	-	4993	712	234	50	0	0
<b>Anno 2022</b>	-	5192	602	156	39	0	0
<b>Efficacia (2018-2022)</b>	-	-199	110	78	11	0	0



<i>Popolazione in edifici con facciate silenziose</i>	55-59	60-64	65-69	70-75	>75
<b>Anno 2018</b>	0	0	0	0	0
<b>Anno 2022</b>	0	0	0	0	0
<b>Efficacia (2018-2022)</b>	0	0	0	0	0

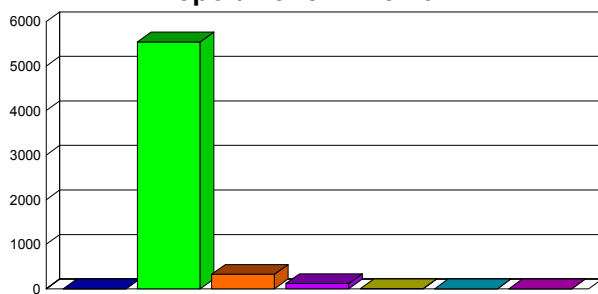
<i>Popolazione in edifici con insonorizzazione</i>	55-59	60-64	65-69	70-75	>75
<b>Anno 2018</b>	42	0	0	0	0
<b>Anno 2022</b>	16	0	0	0	0
<b>Efficacia (2018-2022)</b>	26	0	0	0	0



## COMUNE DI DIANO CASTELLO

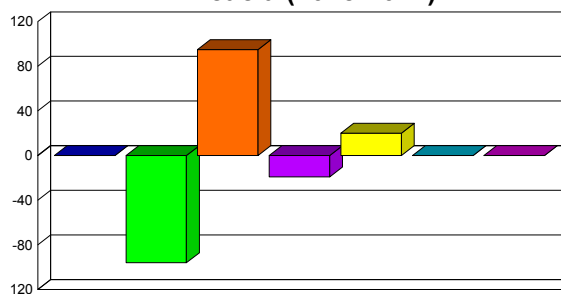
<i>Popolazione esposta per classi di Lnight</i>	Lnight < 50 Esterno a.m.	Lnight < 50 Interno a.m.	50-54	55-59	60-64	65-69	>70
Anno 2018	-	5447	420	99	23	0	0
Anno 2022	-	5543	325	118	3	0	0
Efficacia (2018-2022)	-	-96	95	-19	20	0	0

**Popolazione Anno 2022**



■ Lnight<50 e.a.m. ■ Lnight<50 i.a.m. ■ 50-54  
 ■ 55-59 ■ 60-64 ■ 65-69  
 ■ >70

**Efficacia (2018-2022)**



■ Lnight<50 e.a.m. ■ Lnight<50 i.a.m. ■ 50-54  
 ■ 55-59 ■ 60-64 ■ 65-69  
 ■ >70

**Popolazione in edifici con facciate silenziose**

	50-54	55-59	60-64	65-69	>70
Anno 2018	43	4	3	0	0
Anno 2022	43	4	3	0	0
Efficacia (2018-2022)	0	0	0	0	0

**Popolazione in edifici con insonorizzazione**

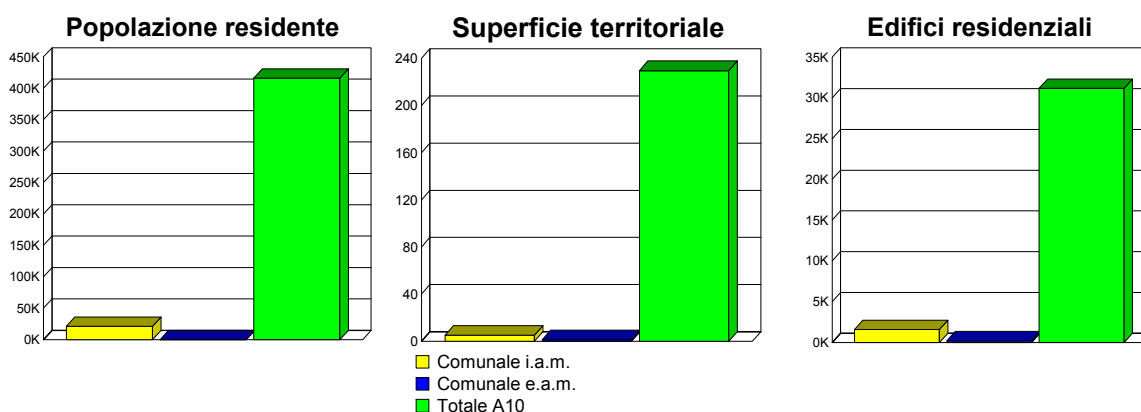
	50-54	55-59	60-64	65-69	>70
Anno 2018	9	0	0	0	0
Anno 2022	0	0	0	0	0
Efficacia (2018-2022)	9	0	0	0	0



## COMUNE DI DIANO MARINA

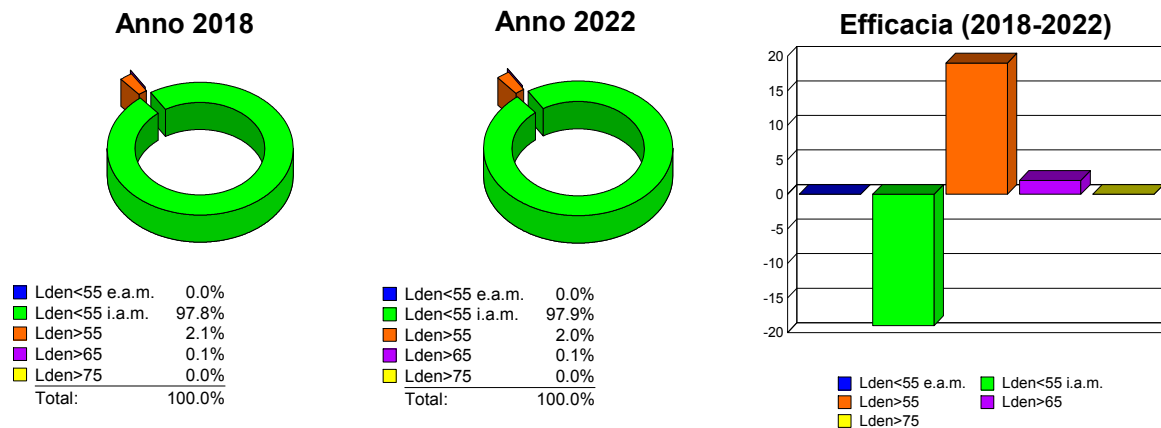
### Sintesi Territoriale

	Territorio comunale Interno ambito di mappatura	Territorio comunale Esterno ambito di mappatura	Autostrada Interno ambito di mappatura
Popolazione residente	21154	-	416433
Superficie territoriale [km2]	5.234	1.401	229.662
Edifici residenziali	1604	224	31160



### Efficacia del piano d'azione

Popolazione Esposta	Lden < 55 Esterno a.m.	Lden < 55 Interno a.m.	Lden > 55	Lden > 65	Lden > 75
Anno 2018	-	20693	461	22	0
Anno 2022	-	20712	442	20	0
Efficacia (2018-2022)	-	-19	19	2	0

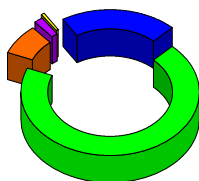




## COMUNE DI DIANO MARINA

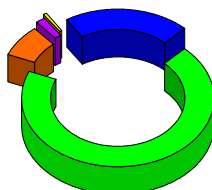
<i>Superficie Territoriale</i>	Lden < 55 Esterno a.m.	Lden < 55 Interno a.m.	Lden > 55	Lden > 65	Lden >75
Anno 2018	1.401	4.565	0.669	0.140	0.042
Anno 2022	1.401	4.582	0.652	0.140	0.043
Efficacia (2018-2022)	0	-0.017	0.017	0	-0.001

Anno 2018



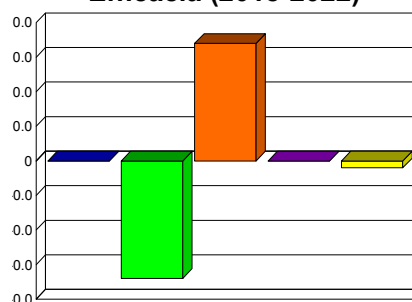
Lden<55 e.a.m.	21.1%
Lden<55 i.a.m.	68.8%
Lden>55	8.0%
Lden>65	1.5%
Lden>75	0.6%
Total:	100.0%

Anno 2022



Lden<55 e.a.m.	21.1%
Lden<55 i.a.m.	69.1%
Lden>55	7.7%
Lden>65	1.5%
Lden>75	0.6%
Total:	100.0%

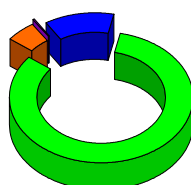
Efficacia (2018-2022)



Lden<55 e.a.m.	Lden<55 i.a.m.
Lden>55	Lden>65
Lden>75	

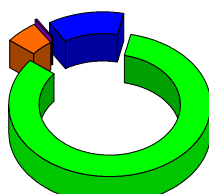
<i>Edifici Residenziali</i>	Lden < 55 Esterno a.m.	Lden < 55 Interno a.m.	Lden > 55	Lden > 65	Lden >75
Anno 2018	224	1500	104	6	0
Anno 2022	224	1503	101	5	0
Efficacia (2018-2022)	0	-3	3	1	0

Anno 2018



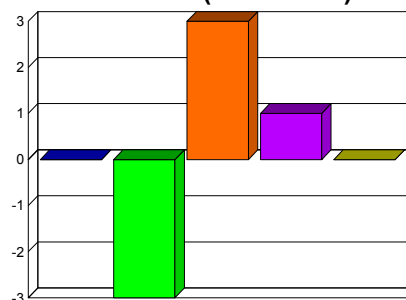
Lden<55 e.a.m.	12.3%
Lden<55 i.a.m.	82.1%
Lden>55	5.4%
Lden>65	0.3%
Lden>75	0.0%
Total:	100.0%

Anno 2022



Lden<55 e.a.m.	12.3%
Lden<55 i.a.m.	82.2%
Lden>55	5.3%
Lden>65	0.3%
Lden>75	0.0%
Total:	100.0%

Efficacia (2018-2022)



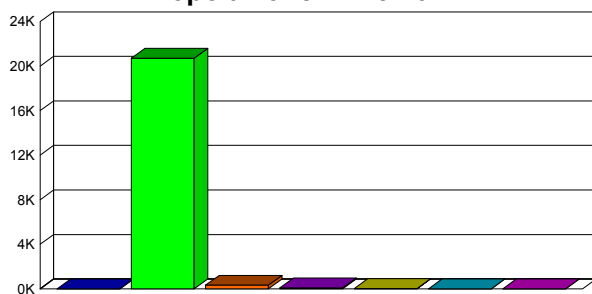
Lden<55 e.a.m.	Lden<55 i.a.m.
Lden>55	Lden>65
Lden>75	



## COMUNE DI DIANO MARINA

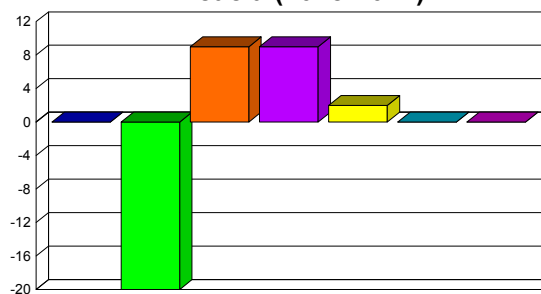
<i>Popolazione esposta per classi di Lden</i>	Lden < 55 Esterno a.m.	Lden < 55 Interno a.m.	55-59	60-64	65-69	70-75	>75
<b>Anno 2018</b>	-	20692	339	101	22	0	0
<b>Anno 2022</b>	-	20712	330	92	20	0	0
<b>Efficacia (2018-2022)</b>	-	-20	9	9	2	0	0

**Popolazione Anno 2022**



■ Lden<55 e.a.m. ■ Lden<55 i.a.m. ■ 55-59  
 ■ 60-64 ■ 65-69 ■ 70-75  
 ■ >75

**Efficacia (2018-2022)**



■ Lden<55 e.a.m. ■ Lden<55 i.a.m. ■ 55-59  
 ■ 60-64 ■ 65-69 ■ 70-75  
 ■ >75

<i>Popolazione in edifici con facciate silenziose</i>	55-59	60-64	65-69	70-75	>75
<b>Anno 2018</b>	0	0	0	0	0
<b>Anno 2022</b>	0	0	0	0	0
<b>Efficacia (2018-2022)</b>	0	0	0	0	0

<i>Popolazione in edifici con insonorizzazione</i>	55-59	60-64	65-69	70-75	>75
<b>Anno 2018</b>	11	0	0	0	0
<b>Anno 2022</b>	11	0	0	0	0
<b>Efficacia (2018-2022)</b>	0	0	0	0	0

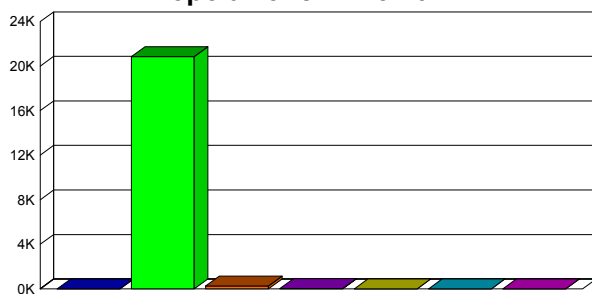




## COMUNE DI DIANO MARINA

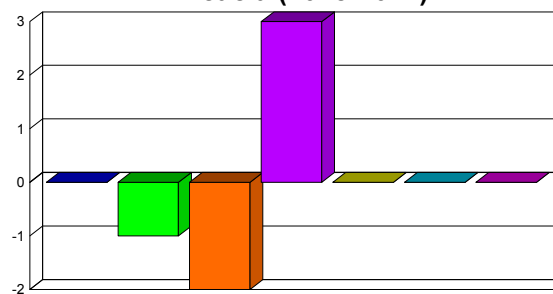
<i>Popolazione esposta per classi di Lnight</i>	Lnight < 50 Esterno a.m.	Lnight < 50 Interno a.m.	50-54	55-59	60-64	65-69	>70
Anno 2018	-	20860	261	33	0	0	0
Anno 2022	-	20861	263	30	0	0	0
Efficacia (2018-2022)	-	-1	-2	3	0	0	0

**Popolazione Anno 2022**



■ Lnight<50 e.a.m.    ■ Lnight<50 i.a.m.    ■ 50-54  
■ 55-59    ■ 60-64    ■ 65-69  
■ >70

**Efficacia (2018-2022)**



■ Lnight<50 e.a.m.    ■ Lnight<50 i.a.m.    ■ 50-54  
■ 55-59    ■ 60-64    ■ 65-69  
■ >70

**Popolazione in edifici con facciate silenziose**

	50-54	55-59	60-64	65-69	>70
Anno 2018	33	4	0	0	0
Anno 2022	33	4	0	0	0
Efficacia (2018-2022)	0	0	0	0	0

**Popolazione in edifici con insonorizzazione**

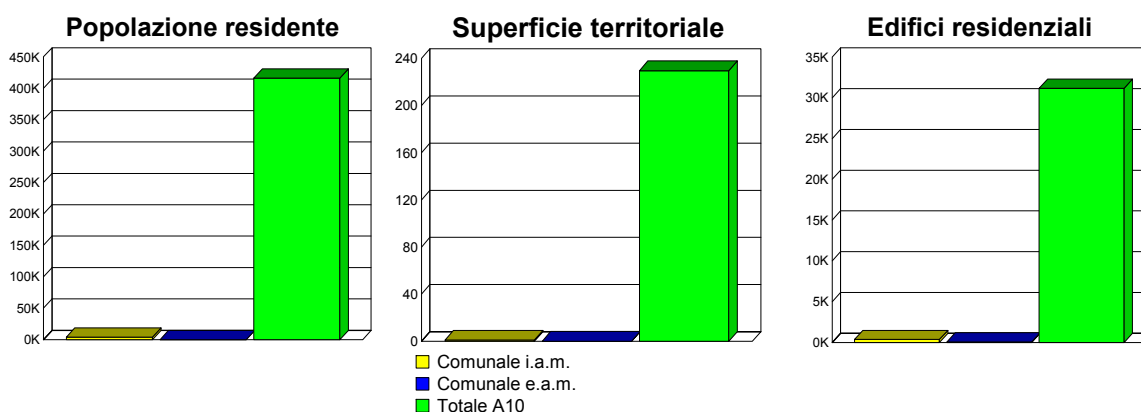
	50-54	55-59	60-64	65-69	>70
Anno 2018	0	0	0	0	0
Anno 2022	0	0	0	0	0
Efficacia (2018-2022)	0	0	0	0	0



## COMUNE DI SAN LORENZO AL MARE

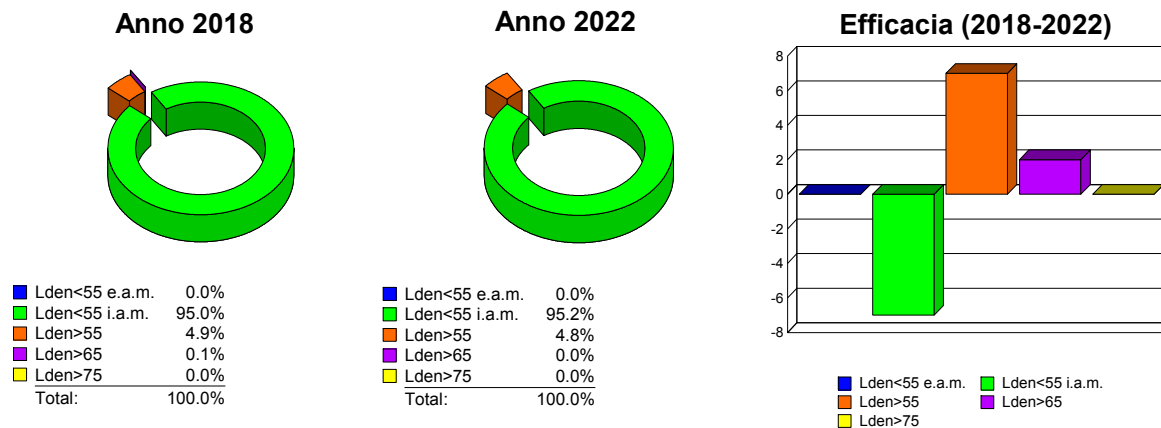
### Sintesi Territoriale

	Territorio comunale Interno ambito di mappatura	Territorio comunale Esterno ambito di mappatura	Autostrada Interno ambito di mappatura
<b>Popolazione residente</b>	3931	-	416433
<b>Superficie territoriale [km2]</b>	1.215	0.187	229.662
<b>Edifici residenziali</b>	364	81	31160



### Efficacia del piano d'azione

Popolazione Esposta	Lden < 55 Esterno a.m.	Lden < 55 Interno a.m.	Lden > 55	Lden > 65	Lden > 75
Anno 2018	-	3736	195	2	0
Anno 2022	-	3743	188	0	0
Efficacia (2018-2022)	-	-7	7	2	0

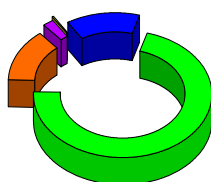




### COMUNE DI SAN LORENZO AL MARE

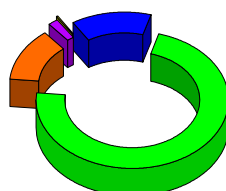
<i>Superficie Territoriale</i>	Lden < 55 Esterno a.m.	Lden < 55 Interno a.m.	Lden > 55	Lden > 65	Lden > 75
<b>Anno 2018</b>	0.187	0.997	0.218	0.033	0.005
<b>Anno 2022</b>	0.187	1.011	0.204	0.028	0.005
<b>Efficacia (2018-2022)</b>	0	-0.014	0.014	0.005	0

**Anno 2018**



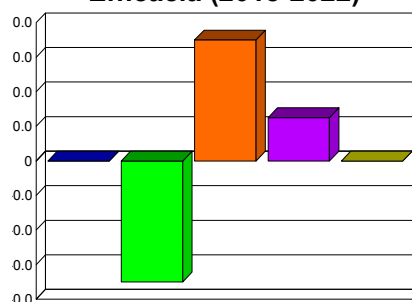
Lden<55 e.a.m.	13.3%
Lden<55 i.a.m.	71.1%
Lden>55	13.2%
Lden>65	2.0%
Lden>75	0.4%
<b>Total:</b>	<b>100.0%</b>

**Anno 2022**



Lden<55 e.a.m.	13.3%
Lden<55 i.a.m.	72.1%
Lden>55	12.5%
Lden>65	1.6%
Lden>75	0.4%
<b>Total:</b>	<b>100.0%</b>

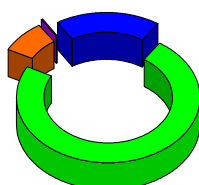
**Efficacia (2018-2022)**



Lden<55 e.a.m.	Lden<55 i.a.m.
Lden>55	Lden>65
Lden>75	

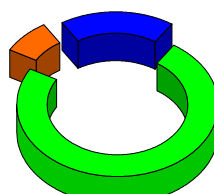
<i>Edifici Residenziali</i>	Lden < 55 Esterno a.m.	Lden < 55 Interno a.m.	Lden > 55	Lden > 65	Lden > 75
<b>Anno 2018</b>	81	327	37	1	0
<b>Anno 2022</b>	81	329	35	0	0
<b>Efficacia (2018-2022)</b>	0	-2	2	1	0

**Anno 2018**



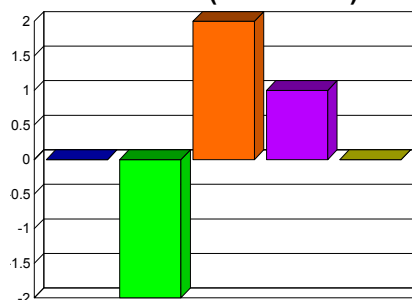
Lden<55 e.a.m.	18.2%
Lden<55 i.a.m.	73.5%
Lden>55	8.1%
Lden>65	0.2%
Lden>75	0.0%
<b>Total:</b>	<b>100.0%</b>

**Anno 2022**



Lden<55 e.a.m.	18.2%
Lden<55 i.a.m.	73.9%
Lden>55	7.9%
Lden>65	0.0%
Lden>75	0.0%
<b>Total:</b>	<b>100.0%</b>

**Efficacia (2018-2022)**



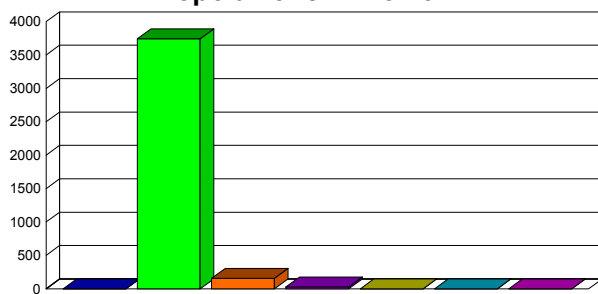
Lden<55 e.a.m.	Lden<55 i.a.m.
Lden>55	Lden>65
Lden>75	



## COMUNE DI SAN LORENZO AL MARE

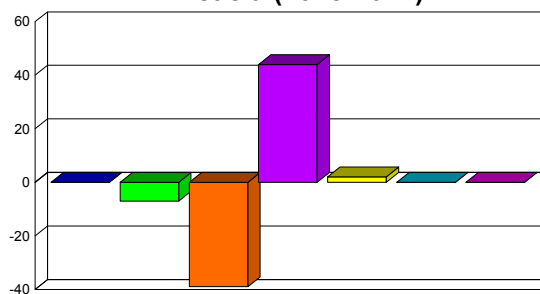
<i>Popolazione esposta per classi di Lden</i>	Lden < 55 Esterno a.m.	Lden < 55 Interno a.m.	55-59	60-64	65-69	70-75	>75
<b>Anno 2018</b>	-	3736	120	73	2	0	0
<b>Anno 2022</b>	-	3743	159	29	0	0	0
<b>Efficacia (2018-2022)</b>	-	-7	-39	44	2	0	0

**Popolazione Anno 2022**



■ Lden<55 e.a.m.    ■ Lden<55 i.a.m.    ■ 55-59  
■ 60-64    ■ 65-69    ■ 70-75  
■ >75

**Efficacia (2018-2022)**



■ Lden<55 e.a.m.    ■ Lden<55 i.a.m.    ■ 55-59  
■ 60-64    ■ 65-69    ■ 70-75  
■ >75

<i>Popolazione in edifici con facciate silenziose</i>	55-59	60-64	65-69	70-75	>75
<b>Anno 2018</b>	0	0	0	0	0
<b>Anno 2022</b>	0	0	0	0	0
<b>Efficacia (2018-2022)</b>	0	0	0	0	0

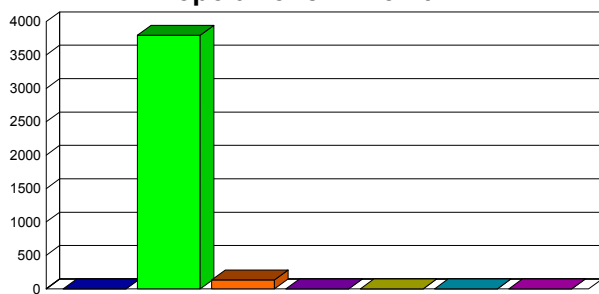
<i>Popolazione in edifici con insonorizzazione</i>	55-59	60-64	65-69	70-75	>75
<b>Anno 2018</b>	0	0	0	0	0
<b>Anno 2022</b>	0	0	0	0	0
<b>Efficacia (2018-2022)</b>	0	0	0	0	0



## COMUNE DI SAN LORENZO AL MARE

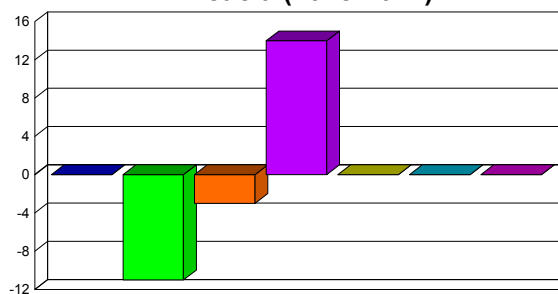
<i>Popolazione esposta per classi di Lnight</i>	Lnight < 50 Esterno a.m.	Lnight < 50 Interno a.m.	50-54	55-59	60-64	65-69	>70
Anno 2018	-	3786	131	14	0	0	0
Anno 2022	-	3797	134	0	0	0	0
Efficacia (2018-2022)	-	-11	-3	14	0	0	0

**Popolazione Anno 2022**



■ Lnight<50 e.a.m. ■ Lnight<50 i.a.m. ■ 50-54  
 ■ 55-59 ■ 60-64 ■ 65-69  
 ■ >70

**Efficacia (2018-2022)**



■ Lnight<50 e.a.m. ■ Lnight<50 i.a.m. ■ 50-54  
 ■ 55-59 ■ 60-64 ■ 65-69  
 ■ >70

**Popolazione in edifici con facciate silenziose**

	50-54	55-59	60-64	65-69	>70
Anno 2018	22	0	0	0	0
Anno 2022	0	0	0	0	0
Efficacia (2018-2022)	22	0	0	0	0

**Popolazione in edifici con insonorizzazione**

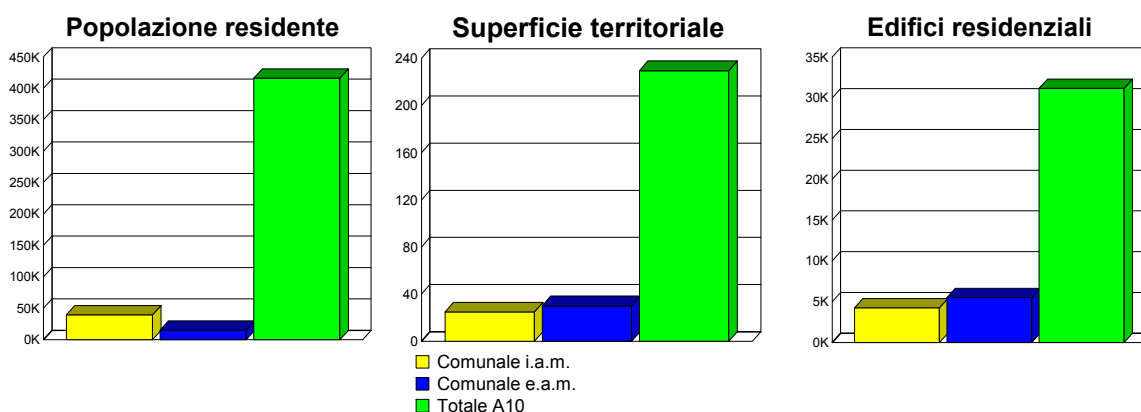
	50-54	55-59	60-64	65-69	>70
Anno 2018	0	0	0	0	0
Anno 2022	0	0	0	0	0
Efficacia (2018-2022)	0	0	0	0	0



## COMUNE DI SAN REMO

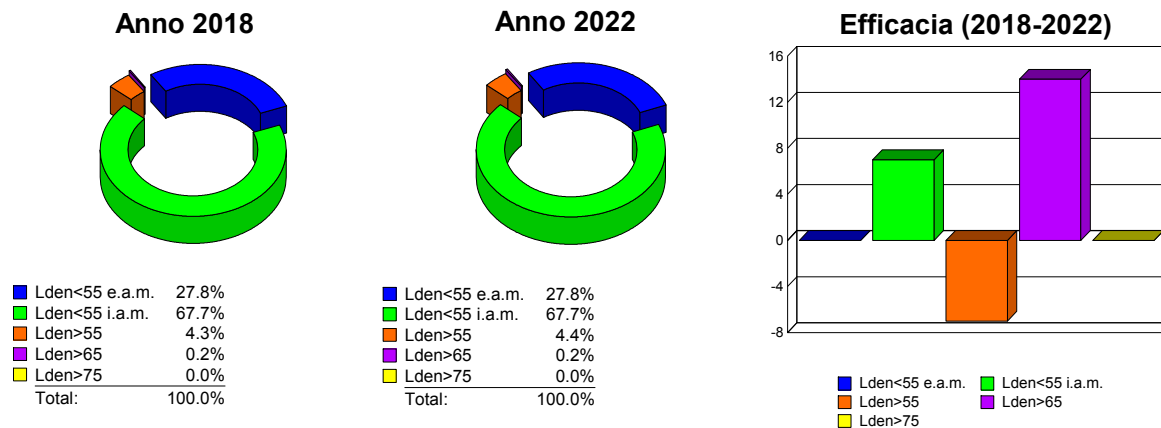
### Sintesi Territoriale

	Territorio comunale Interno ambito di mappatura	Territorio comunale Esterno ambito di mappatura	Autostrada Interno ambito di mappatura
Popolazione residente	39607	15217	416433
Superficie territoriale [km2]	24.892	30.205	229.662
Edifici residenziali	4267	5500	31160



### Efficacia del piano d'azione

Popolazione Esposta	Lden < 55 Esterno a.m.	Lden < 55 Interno a.m.	Lden > 55	Lden > 65	Lden > 75
Anno 2018	15217	37125	2482	115	0
Anno 2022	15217	37118	2489	101	0
Efficacia (2018-2022)	-	7	-7	14	0

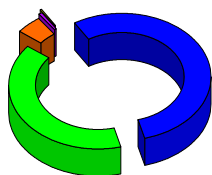




## COMUNE DI SAN REMO

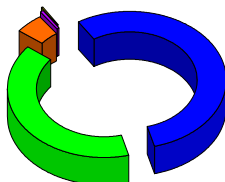
<i>Superficie Territoriale</i>	Lden < 55 Esterno a.m.	Lden < 55 Interno a.m.	Lden > 55	Lden > 65	Lden > 75
Anno 2018	30.205	21.763	3.129	0.495	0.136
Anno 2022	30.205	21.773	3.119	0.494	0.136
Efficacia (2018-2022)	0	-0.010	0.010	0.001	0

Anno 2018



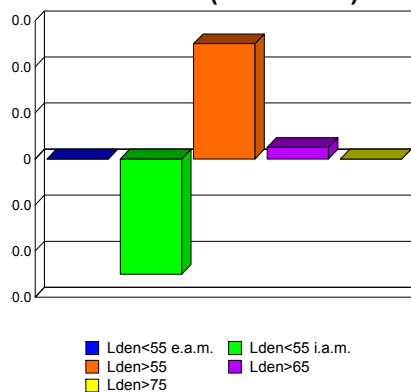
Lden<55 e.a.m.	54.8%
Lden<55 i.a.m.	39.5%
Lden>55	4.8%
Lden>65	0.7%
Lden>75	0.2%
Total:	100.0%

Anno 2022



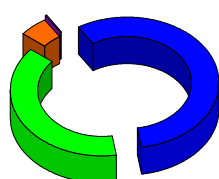
Lden<55 e.a.m.	54.8%
Lden<55 i.a.m.	39.5%
Lden>55	4.8%
Lden>65	0.6%
Lden>75	0.2%
Total:	100.0%

Efficacia (2018-2022)



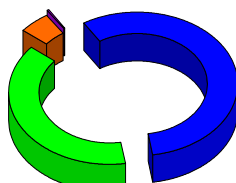
<i>Edifici Residenziali</i>	Lden < 55 Esterno a.m.	Lden < 55 Interno a.m.	Lden > 55	Lden > 65	Lden > 75
Anno 2018	5500	3752	515	23	0
Anno 2022	5500	3754	513	19	0
Efficacia (2018-2022)	0	-2	2	4	0

Anno 2018



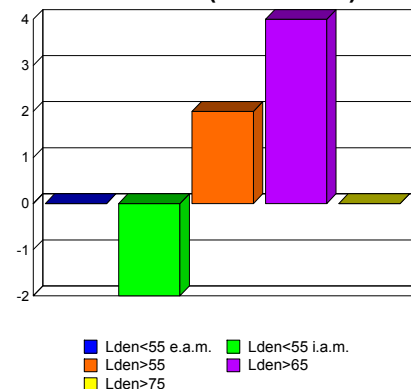
Lden<55 e.a.m.	56.3%
Lden<55 i.a.m.	38.4%
Lden>55	5.0%
Lden>65	0.2%
Lden>75	0.0%
Total:	100.0%

Anno 2022



Lden<55 e.a.m.	56.3%
Lden<55 i.a.m.	38.4%
Lden>55	5.1%
Lden>65	0.2%
Lden>75	0.0%
Total:	100.0%

Efficacia (2018-2022)

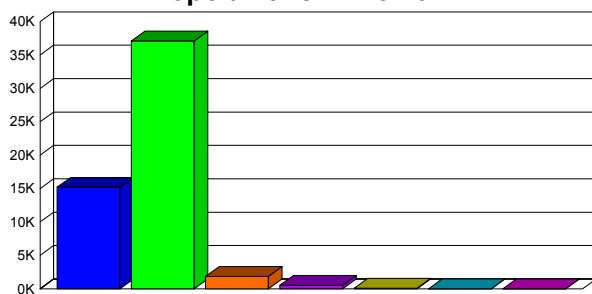




## COMUNE DI SAN REMO

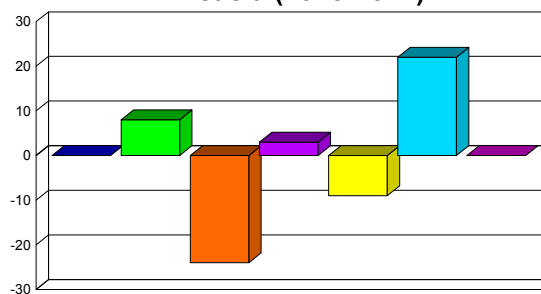
<i>Popolazione esposta per classi di Lden</i>	Lden < 55 Esterno a.m.	Lden < 55 Interno a.m.	55-59	60-64	65-69	70-75	>75
<b>Anno 2018</b>	15217	37126	1832	535	78	36	0
<b>Anno 2022</b>	15217	37118	1856	532	87	14	0
<b>Efficacia (2018-2022)</b>	-	8	-24	3	-9	22	0

**Popolazione Anno 2022**



■ Lden<55 e.a.m. ■ Lden<55 i.a.m. ■ 55-59  
 ■ 60-64 ■ 65-69 ■ 70-75  
 ■ >75

**Efficacia (2018-2022)**



■ Lden<55 e.a.m. ■ Lden<55 i.a.m. ■ 55-59  
 ■ 60-64 ■ 65-69 ■ 70-75  
 ■ >75

<i>Popolazione in edifici con facciate silenziose</i>	55-59	60-64	65-69	70-75	>75
<b>Anno 2018</b>	0	0	0	0	0
<b>Anno 2022</b>	0	0	0	0	0
<b>Efficacia (2018-2022)</b>	0	0	0	0	0

<i>Popolazione in edifici con insonorizzazione</i>	55-59	60-64	65-69	70-75	>75
<b>Anno 2018</b>	51	19	0	0	0
<b>Anno 2022</b>	51	19	0	0	0
<b>Efficacia (2018-2022)</b>	0	0	0	0	0

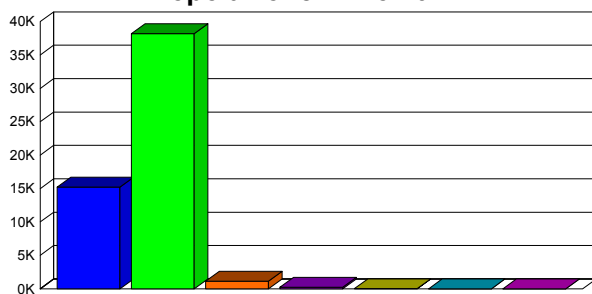




## COMUNE DI SAN REMO

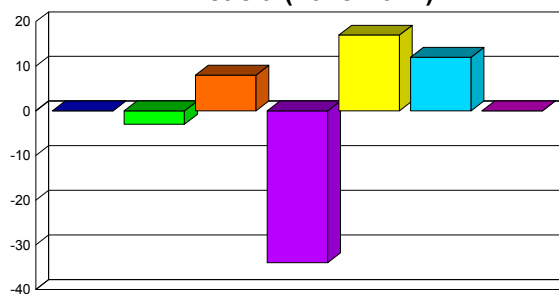
<i>Popolazione esposta per classi di Lnight</i>	Lnight < 50 Esterno a.m.	Lnight < 50 Interno a.m.	50-54	55-59	60-64	65-69	>70
<b>Anno 2018</b>	15217	38200	1150	204	41	12	0
<b>Anno 2022</b>	15217	38203	1142	238	24	0	0
<b>Efficacia (2018-2022)</b>	-	-3	8	-34	17	12	0

**Popolazione Anno 2022**



■ Lnight<50 e.a.m. ■ Lnight<50 i.a.m. ■ 50-54  
 ■ 55-59 ■ 60-64 ■ 65-69  
 ■ >70

**Efficacia (2018-2022)**



■ Lnight<50 e.a.m. ■ Lnight<50 i.a.m. ■ 50-54  
 ■ 55-59 ■ 60-64 ■ 65-69  
 ■ >70

**Popolazione in edifici  
con facciate silenziose**

	50-54	55-59	60-64	65-69	>70
<b>Anno 2018</b>	174	82	11	4	0
<b>Anno 2022</b>	182	55	0	0	0
<b>Efficacia (2018-2022)</b>	-8	27	11	4	0

**Popolazione in edifici  
con insonorizzazione**

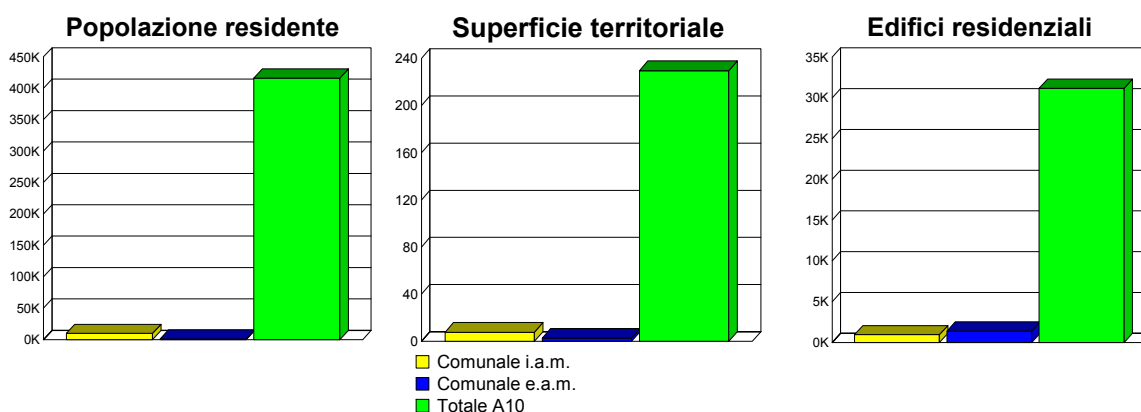
	50-54	55-59	60-64	65-69	>70
<b>Anno 2018</b>	38	0	0	0	0
<b>Anno 2022</b>	38	0	0	0	0
<b>Efficacia (2018-2022)</b>	0	0	0	0	0



## COMUNE DI BORDIGHERA

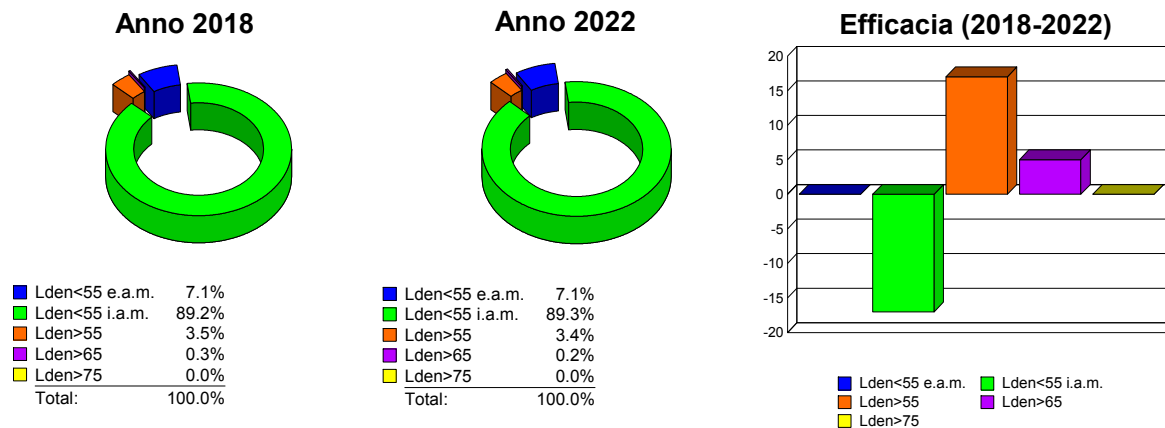
### Sintesi Territoriale

	Territorio comunale Interno ambito di mappatura	Territorio comunale Esterno ambito di mappatura	Autostrada Interno ambito di mappatura
<b>Popolazione residente</b>	9716	738	416433
<b>Superficie territoriale [km2]</b>	7.737	2.790	229.662
<b>Edifici residenziali</b>	944	1393	31160



### Efficacia del piano d'azione

<i>Popolazione Esposta</i>	Lden < 55 Esterno a.m.	Lden < 55 Interno a.m.	Lden > 55	Lden > 65	Lden > 75
<b>Anno 2018</b>	738	9322	394	28	0
<b>Anno 2022</b>	738	9339	377	23	0
<b>Efficacia (2018-2022)</b>	-	-17	17	5	0

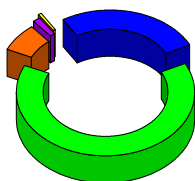




## COMUNE DI BORDIGHERA

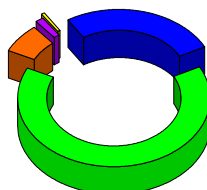
<i>Superficie Territoriale</i>	Lden < 55 Esterno a.m.	Lden < 55 Interno a.m.	Lden > 55	Lden > 65	Lden >75
Anno 2018	2.790	6.786	0.951	0.202	0.058
Anno 2022	2.790	6.797	0.940	0.199	0.058
Efficacia (2018-2022)	0	-0.011	0.011	0.003	0

Anno 2018



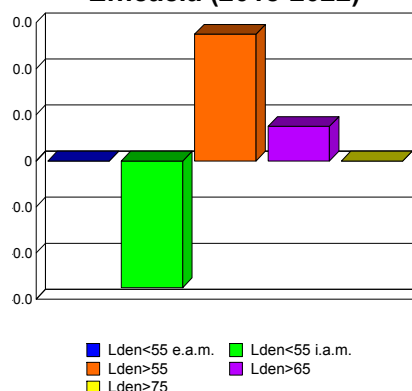
Lden<55 e.a.m.	26.5%
Lden<55 i.a.m.	64.5%
Lden>55	7.1%
Lden>65	1.4%
Lden>75	0.6%
Total:	100.0%

Anno 2022



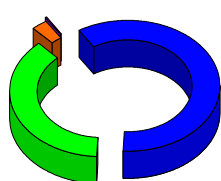
Lden<55 e.a.m.	26.5%
Lden<55 i.a.m.	64.6%
Lden>55	7.0%
Lden>65	1.3%
Lden>75	0.6%
Total:	100.0%

Efficacia (2018-2022)



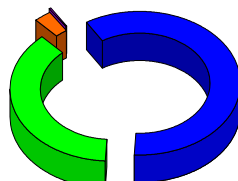
<i>Edifici Residenziali</i>	Lden < 55 Esterno a.m.	Lden < 55 Interno a.m.	Lden > 55	Lden > 65	Lden >75
Anno 2018	1393	870	74	6	0
Anno 2022	1393	872	72	6	0
Efficacia (2018-2022)	0	-2	2	0	0

Anno 2018



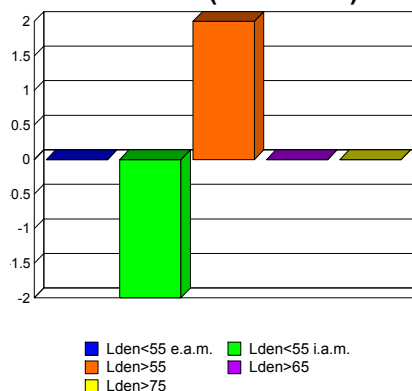
Lden<55 e.a.m.	59.6%
Lden<55 i.a.m.	37.2%
Lden>55	2.9%
Lden>65	0.3%
Lden>75	0.0%
Total:	100.0%

Anno 2022



Lden<55 e.a.m.	59.6%
Lden<55 i.a.m.	37.3%
Lden>55	2.8%
Lden>65	0.3%
Lden>75	0.0%
Total:	100.0%

Efficacia (2018-2022)

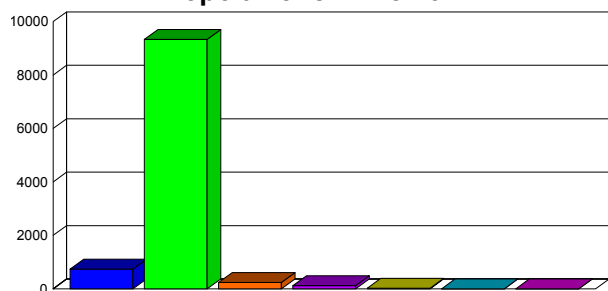




## COMUNE DI BORDIGHERA

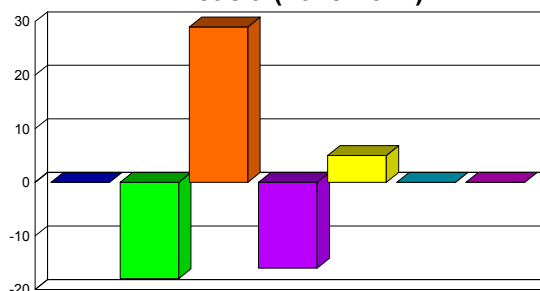
<i>Popolazione esposta per classi di Lden</i>	Lden < 55 Esterno a.m.	Lden < 55 Interno a.m.	55-59	60-64	65-69	70-75	>75
<b>Anno 2018</b>	738	9321	267	100	28	0	0
<b>Anno 2022</b>	738	9339	238	116	23	0	0
<b>Efficacia (2018-2022)</b>	-	-18	29	-16	5	0	0

**Popolazione Anno 2022**



■ Lden<55 e.a.m. ■ Lden<55 i.a.m. ■ 55-59  
 ■ 60-64 ■ 65-69 ■ 70-75  
 ■ >75

**Efficacia (2018-2022)**



■ Lden<55 e.a.m. ■ Lden<55 i.a.m. ■ 55-59  
 ■ 60-64 ■ 65-69 ■ 70-75  
 ■ >75

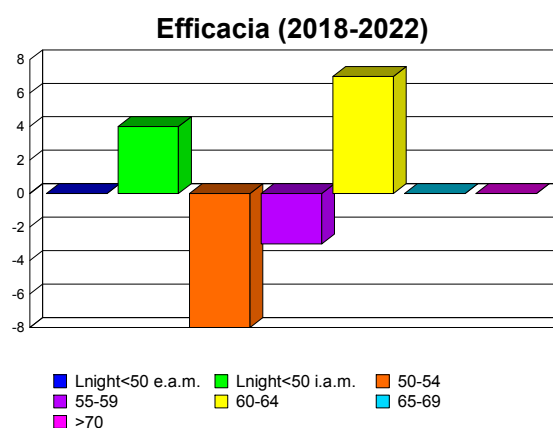
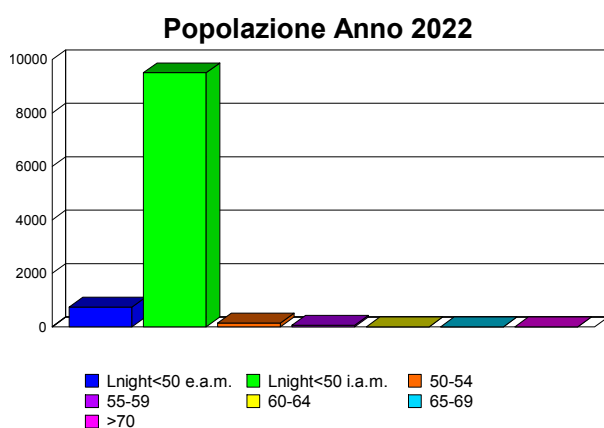
<i>Popolazione in edifici con facciate silenziose</i>	55-59	60-64	65-69	70-75	>75
<b>Anno 2018</b>	0	0	0	0	0
<b>Anno 2022</b>	0	0	0	0	0
<b>Efficacia (2018-2022)</b>	0	0	0	0	0

<i>Popolazione in edifici con insonorizzazione</i>	55-59	60-64	65-69	70-75	>75
<b>Anno 2018</b>	28	12	0	0	0
<b>Anno 2022</b>	28	12	0	0	0
<b>Efficacia (2018-2022)</b>	0	0	0	0	0



## COMUNE DI BORDIGHERA

<i>Popolazione esposta per classi di Lnight</i>	Lnight < 50 Esterno a.m.	Lnight < 50 Interno a.m.	50-54	55-59	60-64	65-69	>70
Anno 2018	738	9514	139	56	7	0	0
Anno 2022	738	9510	147	59	0	0	0
Efficacia (2018-2022)	-	4	-8	-3	7	0	0



<i>Popolazione in edifici con facciate silenziose</i>	50-54	55-59	60-64	65-69	>70
Anno 2018	24	19	1	0	0
Anno 2022	24	16	0	0	0
Efficacia (2018-2022)	0	3	1	0	0

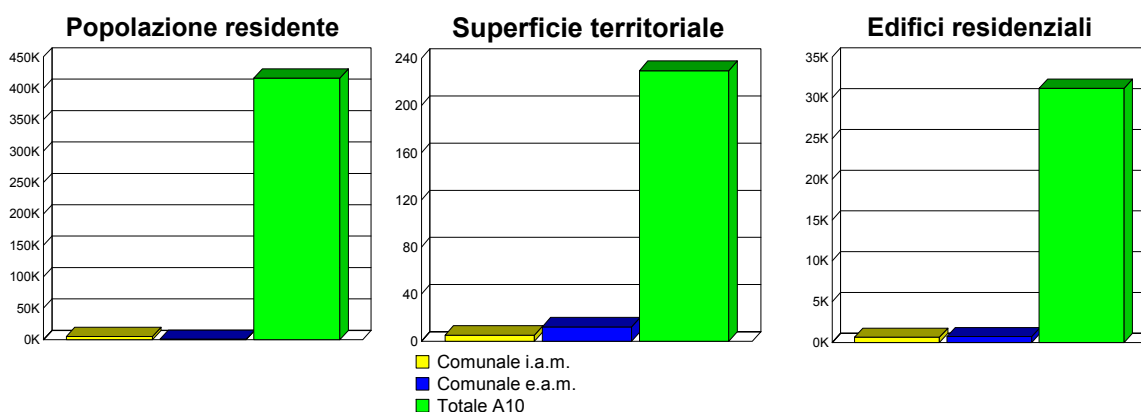
<i>Popolazione in edifici con insonorizzazione</i>	50-54	55-59	60-64	65-69	>70
Anno 2018	20	0	0	0	0
Anno 2022	20	0	0	0	0
Efficacia (2018-2022)	0	0	0	0	0



## COMUNE DI CAMPOROSSO

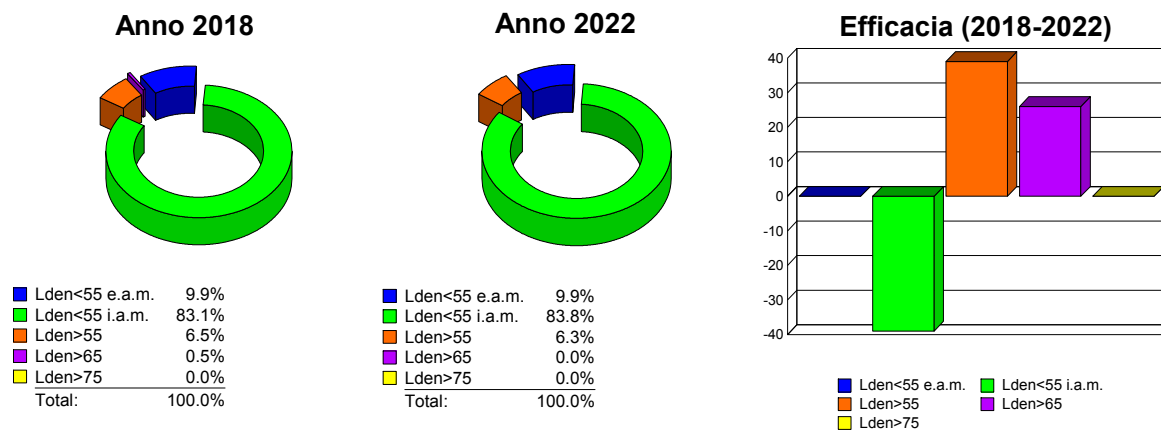
### Sintesi Territoriale

	Territorio comunale Interno ambito di mappatura	Territorio comunale Esterno ambito di mappatura	Autostrada Interno ambito di mappatura
Popolazione residente	5065	557	416433
Superficie territoriale [km2]	5.287	12.239	229.662
Edifici residenziali	634	717	31160



### Efficacia del piano d'azione

Popolazione Esposta	Lden < 55 Esterno a.m.	Lden < 55 Interno a.m.	Lden > 55	Lden > 65	Lden > 75
Anno 2018	557	4673	392	26	0
Anno 2022	557	4712	353	0	0
Efficacia (2018-2022)	-	-39	39	26	0

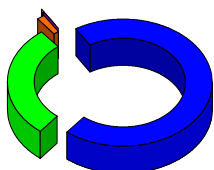




## COMUNE DI CAMPOROSSO

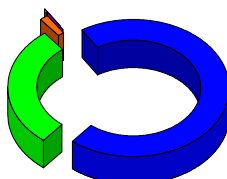
<i>Superficie Territoriale</i>	Lden < 55 Esterno a.m.	Lden < 55 Interno a.m.	Lden > 55	Lden > 65	Lden > 75
Anno 2018	12.239	4.979	0.308	0.030	0.009
Anno 2022	12.239	4.995	0.292	0.026	0.009
Efficacia (2018-2022)	0	-0.016	0.016	0.004	0

Anno 2018



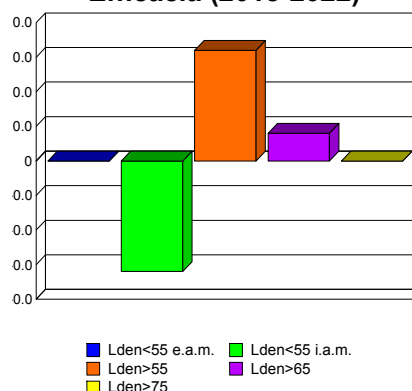
Lden<55 e.a.m.	69.8%
Lden<55 i.a.m.	28.4%
Lden>55	1.6%
Lden>65	0.1%
Lden>75	0.1%
Total:	100.0%

Anno 2022



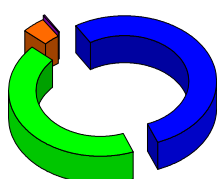
Lden<55 e.a.m.	69.8%
Lden<55 i.a.m.	28.5%
Lden>55	1.5%
Lden>65	0.1%
Lden>75	0.1%
Total:	100.0%

Efficacia (2018-2022)



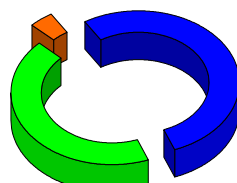
<i>Edifici Residenziali</i>	Lden < 55 Esterno a.m.	Lden < 55 Interno a.m.	Lden > 55	Lden > 65	Lden > 75
Anno 2018	717	574	60	2	0
Anno 2022	717	581	53	0	0
Efficacia (2018-2022)	0	-7	7	2	0

Anno 2018



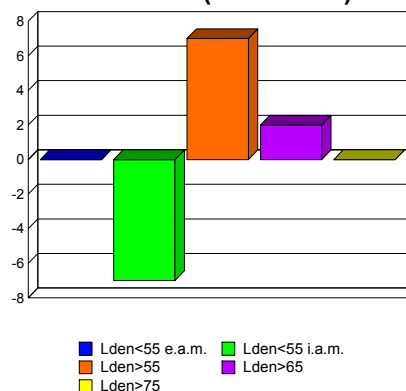
Lden<55 e.a.m.	53.1%
Lden<55 i.a.m.	42.5%
Lden>55	4.3%
Lden>65	0.1%
Lden>75	0.0%
Total:	100.0%

Anno 2022



Lden<55 e.a.m.	53.1%
Lden<55 i.a.m.	43.0%
Lden>55	3.9%
Lden>65	0.0%
Lden>75	0.0%
Total:	100.0%

Efficacia (2018-2022)

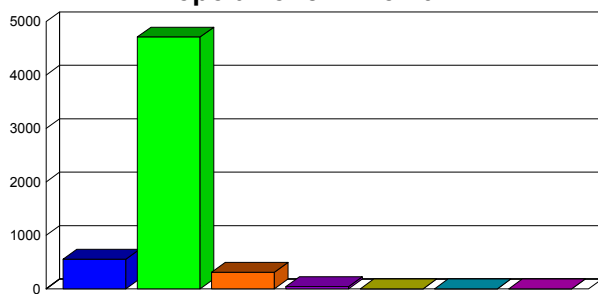




## COMUNE DI CAMPOROSSO

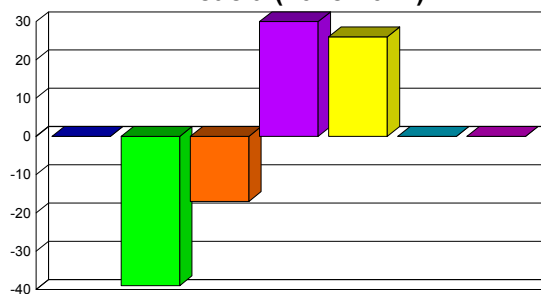
<i>Popolazione esposta per classi di Lden</i>	Lden < 55 Esterno a.m.	Lden < 55 Interno a.m.	55-59	60-64	65-69	70-75	>75
<b>Anno 2018</b>	557	4673	293	73	26	0	0
<b>Anno 2022</b>	557	4712	310	43	0	0	0
<b>Efficacia (2018-2022)</b>	-	-39	-17	30	26	0	0

**Popolazione Anno 2022**



■ Lden<55 e.a.m. ■ Lden<55 i.a.m. ■ 55-59  
 ■ 60-64 ■ 65-69 ■ 70-75  
 ■ >75

**Efficacia (2018-2022)**



■ Lden<55 e.a.m. ■ Lden<55 i.a.m. ■ 55-59  
 ■ 60-64 ■ 65-69 ■ 70-75  
 ■ >75

<i>Popolazione in edifici con facciate silenziose</i>	55-59	60-64	65-69	70-75	>75
<b>Anno 2018</b>	0	0	0	0	0
<b>Anno 2022</b>	0	0	0	0	0
<b>Efficacia (2018-2022)</b>	0	0	0	0	0

<i>Popolazione in edifici con insonorizzazione</i>	55-59	60-64	65-69	70-75	>75
<b>Anno 2018</b>	9	0	0	0	0
<b>Anno 2022</b>	9	0	0	0	0
<b>Efficacia (2018-2022)</b>	0	0	0	0	0

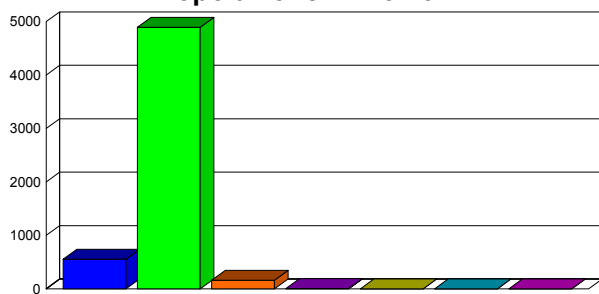




## COMUNE DI CAMPOROSSO

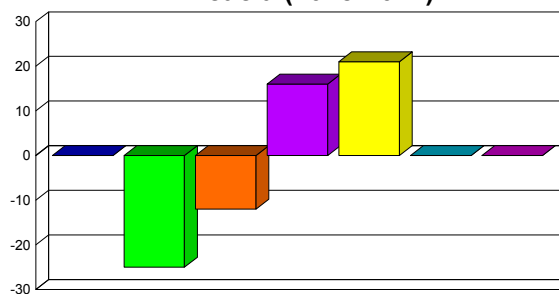
<i>Popolazione esposta per classi di Lnight</i>	Lnight < 50 Esterno a.m.	Lnight < 50 Interno a.m.	50-54	55-59	60-64	65-69	>70
Anno 2018	557	4870	151	23	21	0	0
Anno 2022	557	4895	163	7	0	0	0
Efficacia (2018-2022)	-	-25	-12	16	21	0	0

**Popolazione Anno 2022**



■ Lnight<50 e.a.m. ■ Lnight<50 i.a.m. ■ 50-54  
 ■ 55-59 ■ 60-64 ■ 65-69  
 ■ >70

**Efficacia (2018-2022)**



■ Lnight<50 e.a.m. ■ Lnight<50 i.a.m. ■ 50-54  
 ■ 55-59 ■ 60-64 ■ 65-69  
 ■ >70

**Popolazione in edifici  
con facciate silenziose**

	50-54	55-59	60-64	65-69	>70
Anno 2018	49	7	21	0	0
Anno 2022	49	0	0	0	0
Efficacia (2018-2022)	0	7	21	0	0

**Popolazione in edifici  
con insonorizzazione**

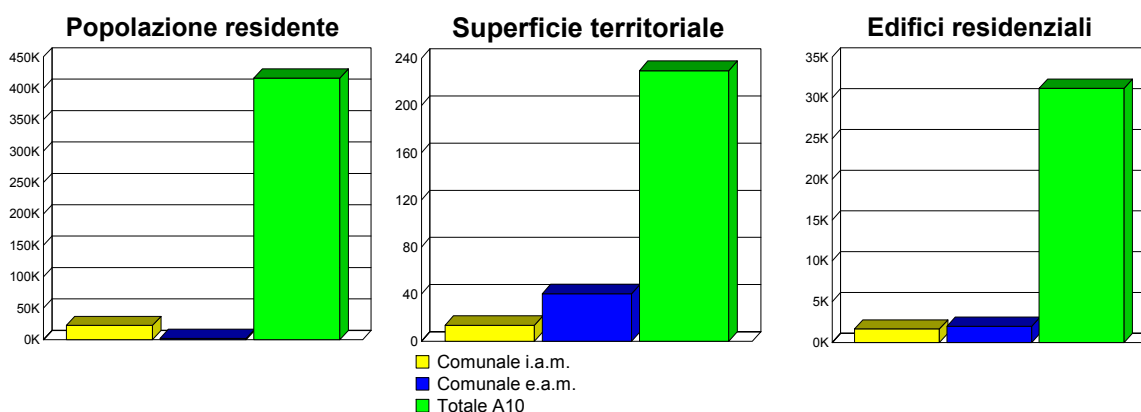
	50-54	55-59	60-64	65-69	>70
Anno 2018	0	0	0	0	0
Anno 2022	0	0	0	0	0
Efficacia (2018-2022)	0	0	0	0	0



## COMUNE DI VENTIMIGLIA

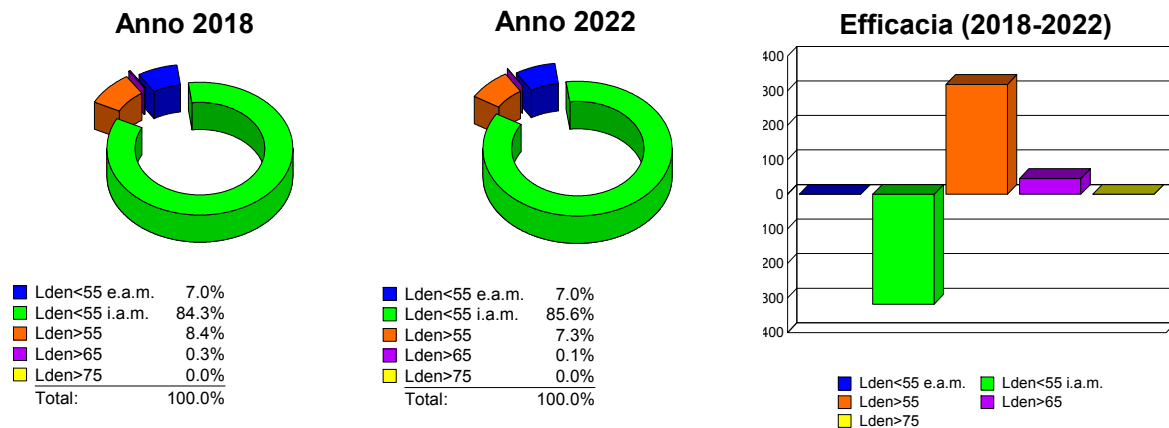
### Sintesi Territoriale

	Territorio comunale Interno ambito di mappatura	Territorio comunale Esterno ambito di mappatura	Autostrada Interno ambito di mappatura
<b>Popolazione residente</b>	22480	1698	416433
<b>Superficie territoriale [km2]</b>	13.595	40.408	229.662
<b>Edifici residenziali</b>	1658	1972	31160



### Efficacia del piano d'azione

Popolazione Esposta	Lden < 55 Esterno a.m.	Lden < 55 Interno a.m.	Lden > 55	Lden > 65	Lden > 75
<b>Anno 2018</b>	1698	20377	2103	73	0
<b>Anno 2022</b>	1698	20695	1785	27	0
<b>Efficacia (2018-2022)</b>	-	-318	318	46	0

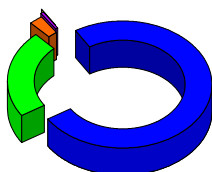




## COMUNE DI VENTIMIGLIA

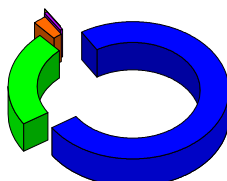
<i>Superficie Territoriale</i>	Lden < 55 Esterno a.m.	Lden < 55 Interno a.m.	Lden > 55	Lden > 65	Lden >75
Anno 2018	40.408	11.923	1.672	0.291	0.073
Anno 2022	40.408	12.153	1.442	0.258	0.059
Efficacia (2018-2022)	0	-0.230	0.230	0.033	0.014

Anno 2018



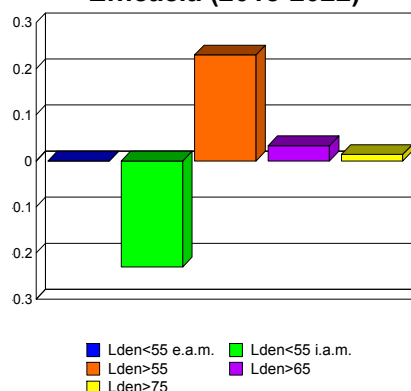
Lden<55 e.a.m.	74.8%
Lden<55 i.a.m.	22.1%
Lden>55	2.6%
Lden>65	0.4%
Lden>75	0.1%
Total:	100.0%

Anno 2022



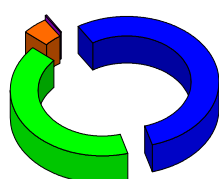
Lden<55 e.a.m.	74.8%
Lden<55 i.a.m.	22.5%
Lden>55	2.2%
Lden>65	0.4%
Lden>75	0.1%
Total:	100.0%

Efficacia (2018-2022)



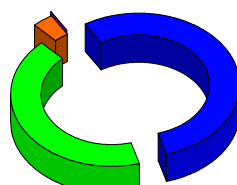
<i>Edifici Residenziali</i>	Lden < 55 Esterno a.m.	Lden < 55 Interno a.m.	Lden > 55	Lden > 65	Lden >75
Anno 2018	1972	1485	173	10	0
Anno 2022	1972	1533	125	3	0
Efficacia (2018-2022)	0	-48	48	7	0

Anno 2018



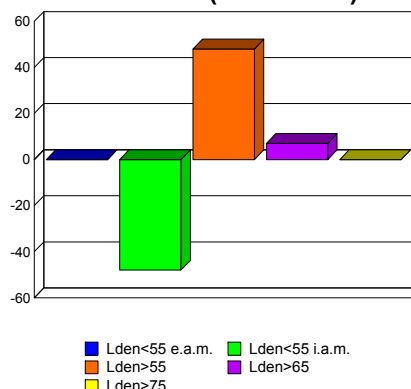
Lden<55 e.a.m.	54.3%
Lden<55 i.a.m.	40.9%
Lden>55	4.5%
Lden>65	0.3%
Lden>75	0.0%
Total:	100.0%

Anno 2022



Lden<55 e.a.m.	54.3%
Lden<55 i.a.m.	42.2%
Lden>55	3.4%
Lden>65	0.1%
Lden>75	0.0%
Total:	100.0%

Efficacia (2018-2022)

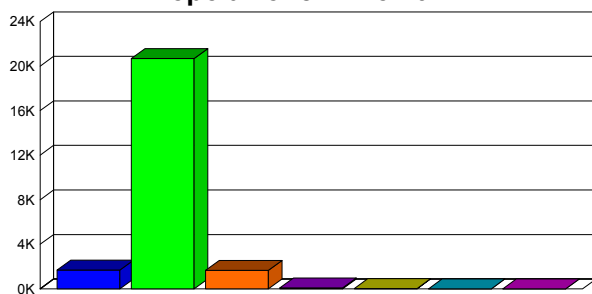




## COMUNE DI VENTIMIGLIA

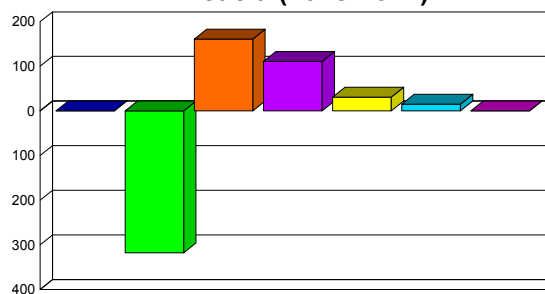
<i>Popolazione esposta per classi di Lden</i>	Lden < 55 Esterno a.m.	Lden < 55 Interno a.m.	55-59	60-64	65-69	70-75	>75
<b>Anno 2018</b>	1698	20377	1824	206	58	15	0
<b>Anno 2022</b>	1698	20695	1663	95	27	0	0
<b>Efficacia (2018-2022)</b>	-	-318	161	111	31	15	0

**Popolazione Anno 2022**



■ Lden<55 e.a.m.    ■ Lden<55 i.a.m.    ■ 55-59  
■ 60-64    ■ 65-69    ■ 70-75  
■ >75

**Efficacia (2018-2022)**



■ Lden<55 e.a.m.    ■ Lden<55 i.a.m.    ■ 55-59  
■ 60-64    ■ 65-69    ■ 70-75  
■ >75

*Popolazione in edifici  
con facciate silenziose*

	55-59	60-64	65-69	70-75	>75
<b>Anno 2018</b>	0	0	0	0	0
<b>Anno 2022</b>	0	0	0	0	0
<b>Efficacia (2018-2022)</b>	0	0	0	0	0

*Popolazione in edifici  
con insonorizzazione*

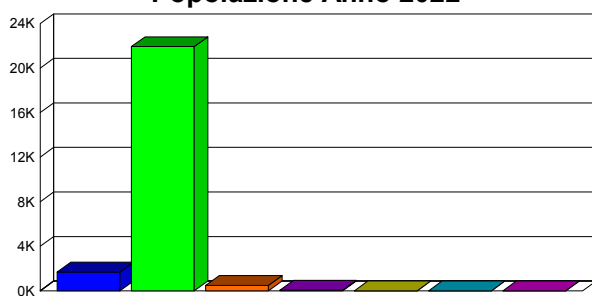
	55-59	60-64	65-69	70-75	>75
<b>Anno 2018</b>	9	5	0	0	0
<b>Anno 2022</b>	0	5	0	0	0
<b>Efficacia (2018-2022)</b>	9	0	0	0	0



## COMUNE DI VENTIMIGLIA

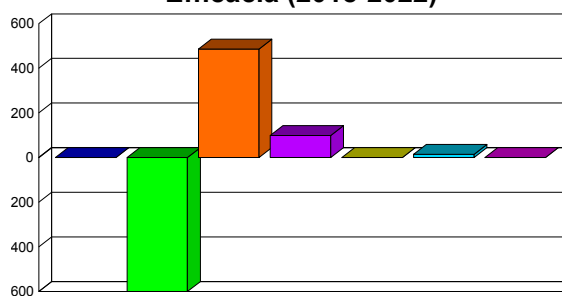
<i>Popolazione esposta per classi di Lnight</i>	Lnight < 50 Esterno a.m.	Lnight < 50 Interno a.m.	50-54	55-59	60-64	65-69	>70
Anno 2018	1698	21335	973	157	0	15	0
Anno 2022	1698	21935	487	58	0	0	0
Efficacia (2018-2022)	-	-600	486	99	0	15	0

**Popolazione Anno 2022**



■ Lnight<50 e.a.m. ■ Lnight<50 i.a.m. ■ 50-54  
 ■ 55-59 ■ 60-64 ■ 65-69  
 ■ >70

**Efficacia (2018-2022)**



■ Lnight<50 e.a.m. ■ Lnight<50 i.a.m. ■ 50-54  
 ■ 55-59 ■ 60-64 ■ 65-69  
 ■ >70

**Popolazione in edifici con facciate silenziose**

	50-54	55-59	60-64	65-69	>70
Anno 2018	511	0	0	15	0
Anno 2022	118	0	0	0	0
Efficacia (2018-2022)	393	0	0	15	0

**Popolazione in edifici con insonorizzazione**

	50-54	55-59	60-64	65-69	>70
Anno 2018	9	5	0	0	0
Anno 2022	5	0	0	0	0
Efficacia (2018-2022)	4	5	0	0	0