

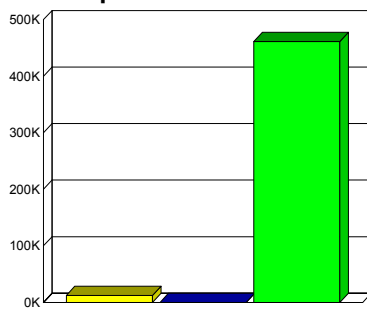


COMUNE DI PIETRA LIGURE

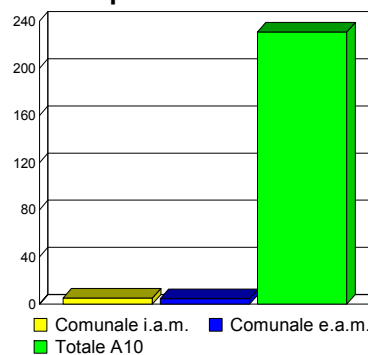
Sintesi Territoriale

	Territorio comunale Interno ambito di mappatura	Territorio comunale Esterno ambito di mappatura	Autostrada A10 Interno ambito di mappatura
Popolazione residente	12417	-	461455
Superficie territoriale [km2]	5.182	4.696	230.886
Edifici residenziali	771	10360	28697

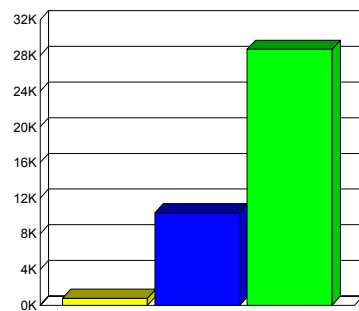
Popolazione residente



Superficie territoriale



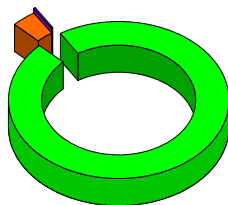
Edifici residenziali



Efficacia del piano d'azione

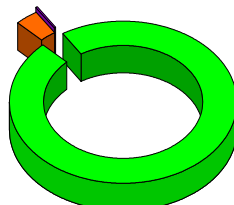
Popolazione Esposta	Lden < 55 Esterno a.m.	Lden < 55 Interno a.m.	Lden > 55	Lden > 65	Lden > 75
Anno 2013	-	11919	498	51	0
Anno 2017	-	11953	464	47	0
Efficacia (2013-2017)	-	-34	34	4	0

Anno 2013



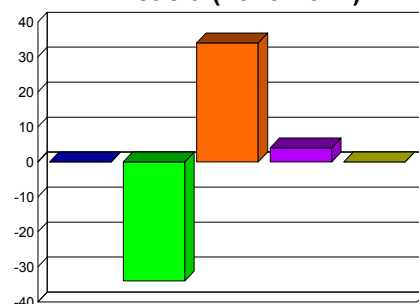
Lden<55 e.a.m.	0.0%
Lden<55 i.a.m.	96.0%
Lden>55	3.6%
Lden>65	0.4%
Lden>75	0.0%
Total:	100.0%

Anno 2017



Lden<55 e.a.m.	0.0%
Lden<55 i.a.m.	96.3%
Lden>55	3.4%
Lden>65	0.4%
Lden>75	0.0%
Total:	100.0%

Efficacia (2013-2017)



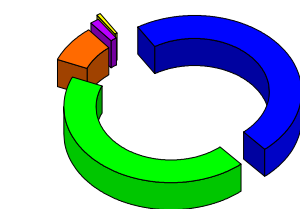
Lden<55 e.a.m.	Lden<55 i.a.m.
Lden>55	Lden>65
Lden>75	



COMUNE DI PIETRA LIGURE

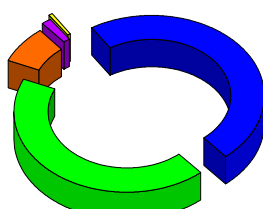
<i>Superficie Territoriale</i>	Lden < 55 Esterno a.m.	Lden < 55 Interno a.m.	Lden > 55	Lden > 65	Lden >75
Anno 2013	4.696	4.228	0.954	0.201	0.056
Anno 2017	4.696	4.246	0.936	0.186	0.054
Efficacia (2013-2017)	0	-0.018	0.018	0.015	0.002

Anno 2013



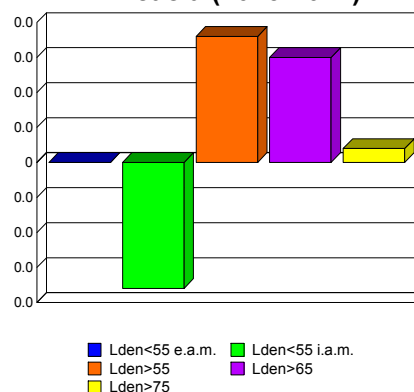
Lden<55 e.a.m.	47.5%
Lden<55 i.a.m.	42.8%
Lden>55	7.6%
Lden>65	1.5%
Lden>75	0.6%
Total:	100.0%

Anno 2017



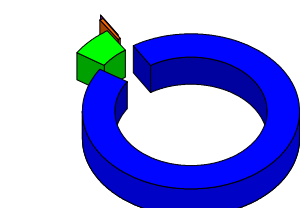
Lden<55 e.a.m.	47.5%
Lden<55 i.a.m.	43.0%
Lden>55	7.6%
Lden>65	1.3%
Lden>75	0.5%
Total:	100.0%

Efficacia (2013-2017)



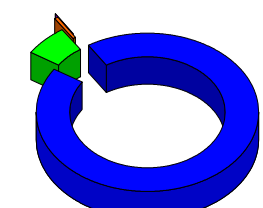
<i>Edifici Residenziali</i>	Lden < 55 Esterno a.m.	Lden < 55 Interno a.m.	Lden > 55	Lden > 65	Lden >75
Anno 2013	10360	695	76	10	0
Anno 2017	10360	697	74	9	0
Efficacia (2013-2017)	0	-2	2	1	0

Anno 2013



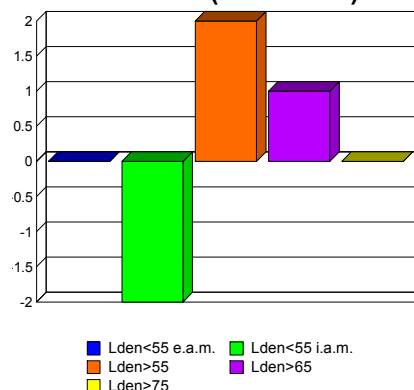
Lden<55 e.a.m.	93.1%
Lden<55 i.a.m.	6.2%
Lden>55	0.6%
Lden>65	0.1%
Lden>75	0.0%
Total:	100.0%

Anno 2017



Lden<55 e.a.m.	93.1%
Lden<55 i.a.m.	6.3%
Lden>55	0.6%
Lden>65	0.1%
Lden>75	0.0%
Total:	100.0%

Efficacia (2013-2017)

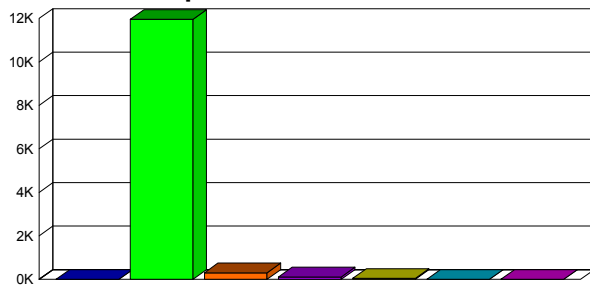




COMUNE DI PIETRA LIGURE

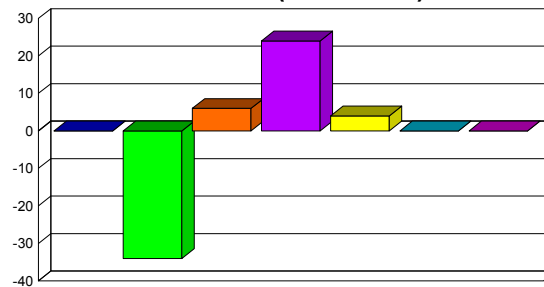
<i>Popolazione esposta per classi di Lden</i>	Lden < 55 Esterno a.m.	Lden < 55 Interno a.m.	55-59	60-64	65-69	70-75	>75
Anno 2013	-	11919	313	134	51	0	0
Anno 2017	-	11953	307	110	47	0	0
Efficacia (2013-2017)	-	-34	6	24	4	0	0

Popolazione Anno 2013



■ Lden<55 e.a.m. ■ Lden<55 i.a.m. ■ 55-59
■ 60-64 ■ 65-69 ■ 70-75
■ >75

Efficacia (2013-2017)



■ Lden<55 e.a.m. ■ Lden<55 i.a.m. ■ 55-59
■ 60-64 ■ 65-69 ■ 70-75
■ >75

<i>Popolazione in edifici con facciate silenti</i>	55-59	60-64	65-69	70-75	>75
Anno 2013	0	0	0	0	0
Anno 2017	0	0	0	0	0
Efficacia (2013-2017)	0	0	0	0	0

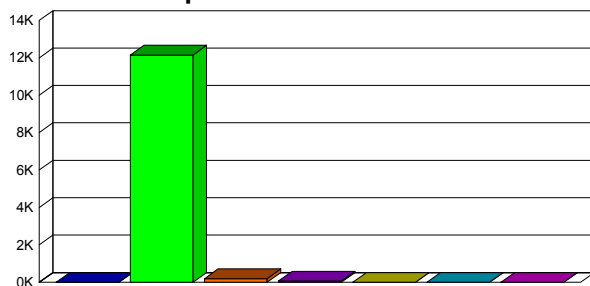
<i>Popolazione in edifici con insonorizzazione</i>	55-59	60-64	65-69	70-75	>75
Anno 2013	0	0	0	0	0
Anno 2017	0	0	0	0	0
Efficacia (2013-2017)	0	0	0	0	0



COMUNE DI PIETRA LIGURE

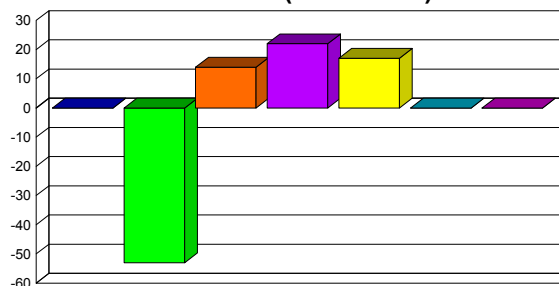
<i>Popolazione esposta per classi di Lnight</i>	Lnight < 50 Esterno a.m.	Lnight < 50 Interno a.m.	50-54	55-59	60-64	65-69	>70
Anno 2013	-	12093	216	89	19	0	0
Anno 2017	-	12146	202	67	2	0	0
Efficacia (2013-2017)	-	-53	14	22	17	0	0

Popolazione Anno 2013



■ Lnight<50 e.a.m. ■ Lnight<50 i.a.m. ■ 50-54
 ■ 55-59 ■ 60-64 ■ 65-69
 ■ >70

Efficacia (2013-2017)



■ Lnight<50 e.a.m. ■ Lnight<50 i.a.m. ■ 50-54
 ■ 55-59 ■ 60-64 ■ 65-69
 ■ >70

Popolazione in edifici con facciate silenziose

	50-54	55-59	60-64	65-69	>70
Anno 2013	9	12	0	0	0
Anno 2017	0	0	0	0	0
Efficacia (2013-2017)	9	12	0	0	0

Popolazione in edifici con insonorizzazione

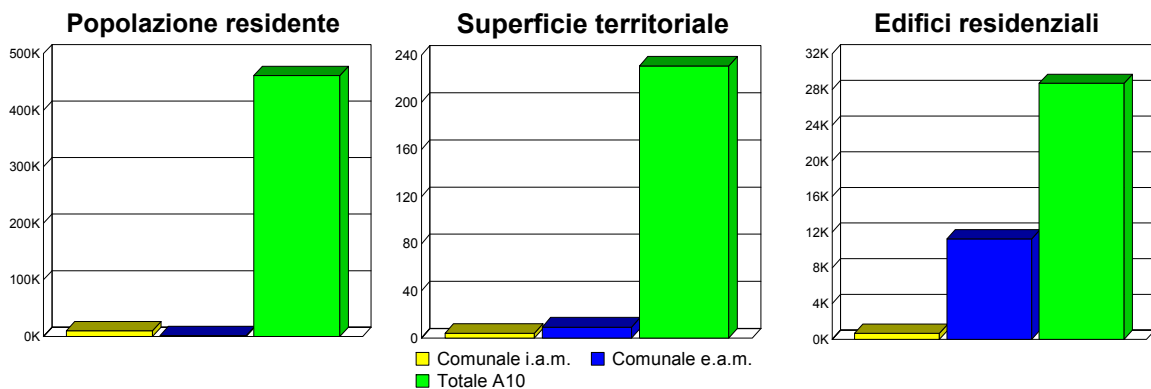
	50-54	55-59	60-64	65-69	>70
Anno 2013	0	0	0	0	0
Anno 2017	0	0	0	0	0
Efficacia (2013-2017)	0	0	0	0	0



COMUNE DI LOANO

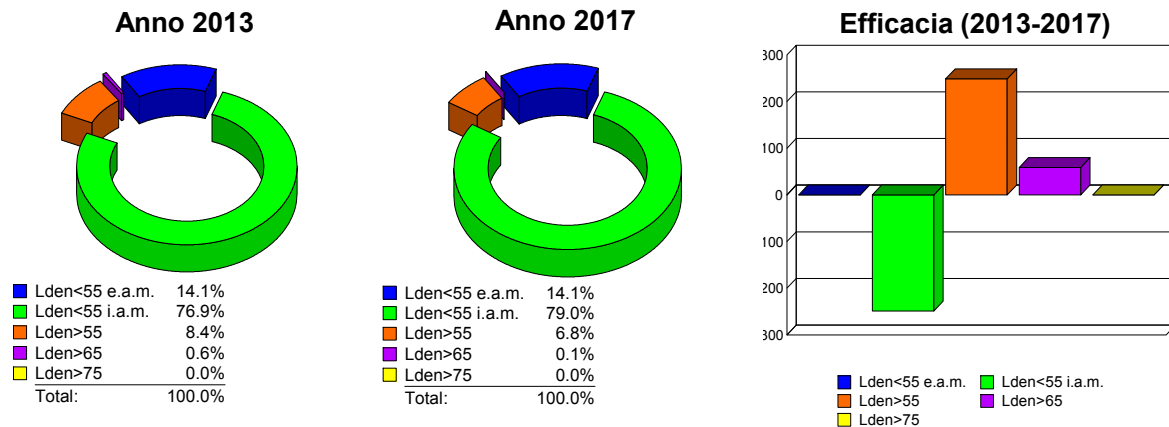
Sintesi Territoriale

	Territorio comunale Interno ambito di mappatura	Territorio comunale Esterno ambito di mappatura	Autostrada A10 Interno ambito di mappatura
Popolazione residente	9978	1635	461455
Superficie territoriale [km2]	4.039	9.392	230.886
Edifici residenziali	674	11259	28697



Efficacia del piano d'azione

Popolazione Esposta	Lden < 55 Esterno a.m.	Lden < 55 Interno a.m.	Lden > 55	Lden > 65	Lden > 75
Anno 2013	1635	8929	1049	68	0
Anno 2017	1635	9178	800	9	0
Efficacia (2013-2017)	-	-249	249	59	0

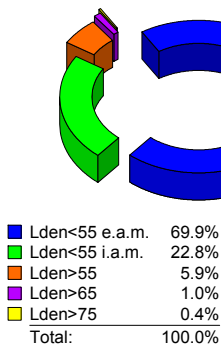




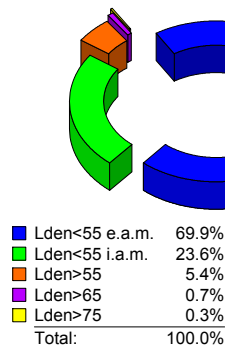
COMUNE DI LOANO

<i>Superficie Territoriale</i>	Lden < 55 Esterno a.m.	Lden < 55 Interno a.m.	Lden > 55	Lden > 65	Lden >75
Anno 2013	9.392	3.060	0.979	0.187	0.051
Anno 2017	9.392	3.165	0.874	0.146	0.047
Efficacia (2013-2017)	0	-0.105	0.105	0.041	0.004

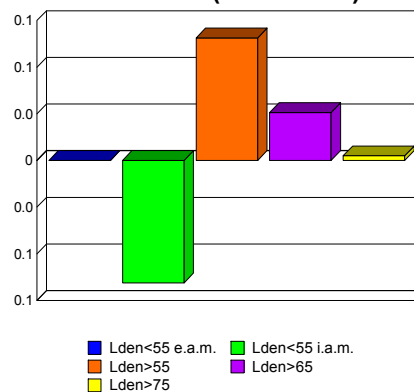
Anno 2013



Anno 2017

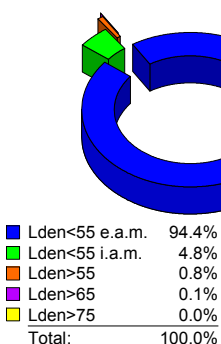


Efficacia (2013-2017)

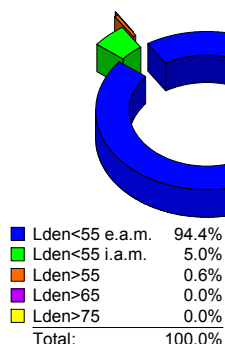


<i>Edifici Residenziali</i>	Lden < 55 Esterno a.m.	Lden < 55 Interno a.m.	Lden > 55	Lden > 65	Lden >75
Anno 2013	11259	567	107	14	0
Anno 2017	11259	596	78	2	0
Efficacia (2013-2017)	0	-29	29	12	0

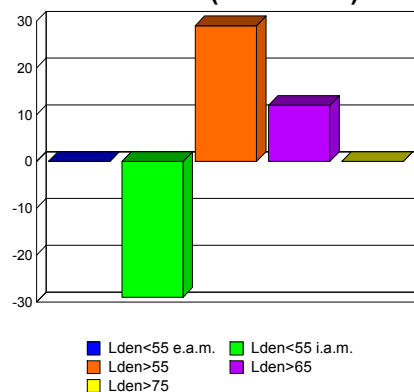
Anno 2013



Anno 2017



Efficacia (2013-2017)

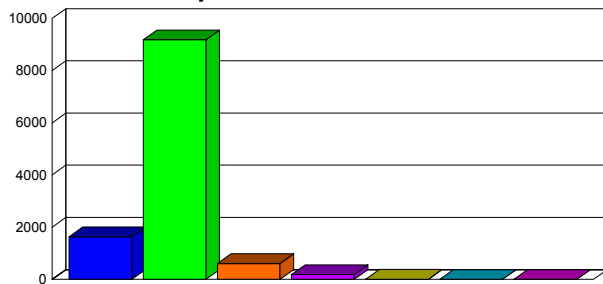




COMUNE DI LOANO

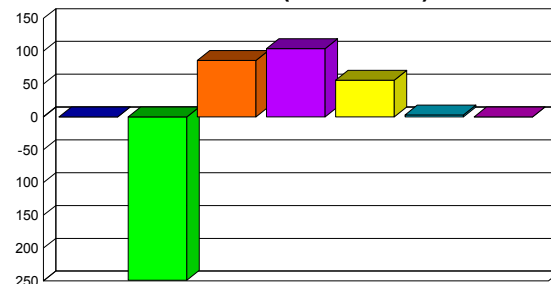
<i>Popolazione esposta per classi di Lden</i>	Lden < 55 Esterno a.m.	Lden < 55 Interno a.m.	55-59	60-64	65-69	70-75	>75
Anno 2013	1635	8930	690	290	65	3	0
Anno 2017	1635	9179	604	186	9	0	0
Efficacia (2013-2017)	-	-249	86	104	56	3	0

Popolazione Anno 2013



■ Lden<55 e.a.m. ■ Lden<55 i.a.m. ■ 55-59
 ■ 60-64 ■ 65-69 ■ 70-75
 ■ >75

Efficacia (2013-2017)



■ Lden<55 e.a.m. ■ Lden<55 i.a.m. ■ 55-59
 ■ 60-64 ■ 65-69 ■ 70-75
 ■ >75

**Popolazione in edifici
con facciate silenziose**

	55-59	60-64	65-69	70-75	>75
Anno 2013	0	0	0	0	0
Anno 2017	0	0	0	0	0
Efficacia (2013-2017)	0	0	0	0	0

**Popolazione in edifici
con insonorizzazione**

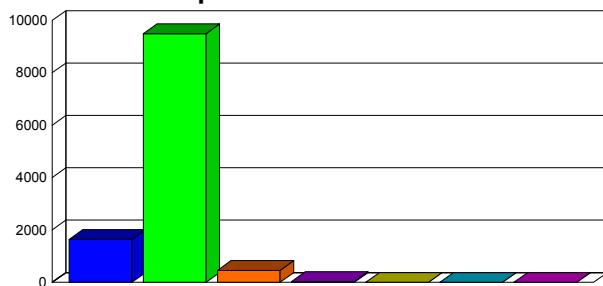
	55-59	60-64	65-69	70-75	>75
Anno 2013	0	0	0	0	0
Anno 2017	0	0	0	0	0
Efficacia (2013-2017)	0	0	0	0	0



COMUNE DI LOANO

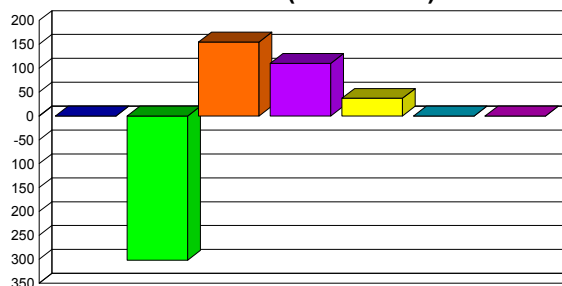
<i>Popolazione esposta per classi di Lnight</i>	Lnight < 50 Esterno a.m.	Lnight < 50 Interno a.m.	50-54	55-59	60-64	65-69	>70
Anno 2013	1635	9187	616	138	37	0	0
Anno 2017	1635	9489	461	28	0	0	0
Efficacia (2013-2017)	-	-302	155	110	37	0	0

Popolazione Anno 2013



■ Lnight<50 e.a.m. ■ Lnight<50 i.a.m. ■ 50-54
 ■ 55-59 ■ 60-64 ■ 65-69
 ■ >70

Efficacia (2013-2017)



■ Lnight<50 e.a.m. ■ Lnight<50 i.a.m. ■ 50-54
 ■ 55-59 ■ 60-64 ■ 65-69
 ■ >70

**Popolazione in edifici
con facciate silenziose**

	50-54	55-59	60-64	65-69	>70
Anno 2013	63	6	0	0	0
Anno 2017	0	6	0	0	0
Efficacia (2013-2017)	63	0	0	0	0

**Popolazione in edifici
con insonorizzazione**

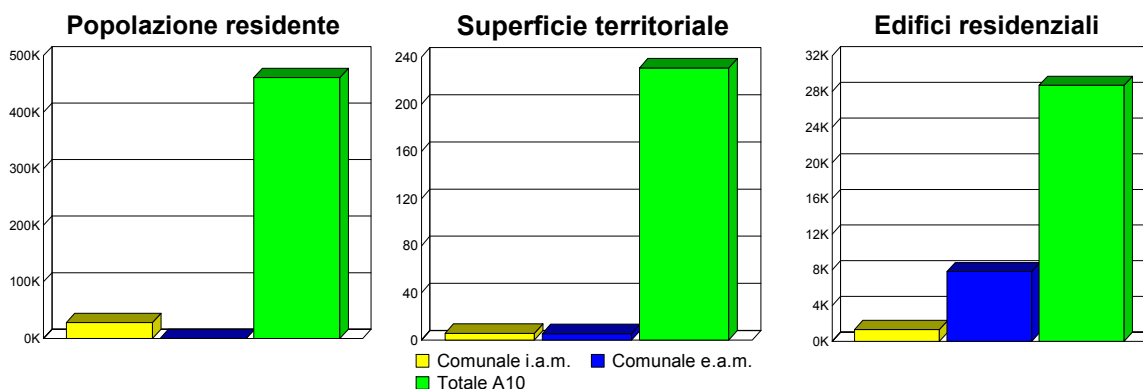
	50-54	55-59	60-64	65-69	>70
Anno 2013	0	0	0	0	0
Anno 2017	0	0	0	0	0
Efficacia (2013-2017)	0	0	0	0	0



COMUNE DI CERIALE

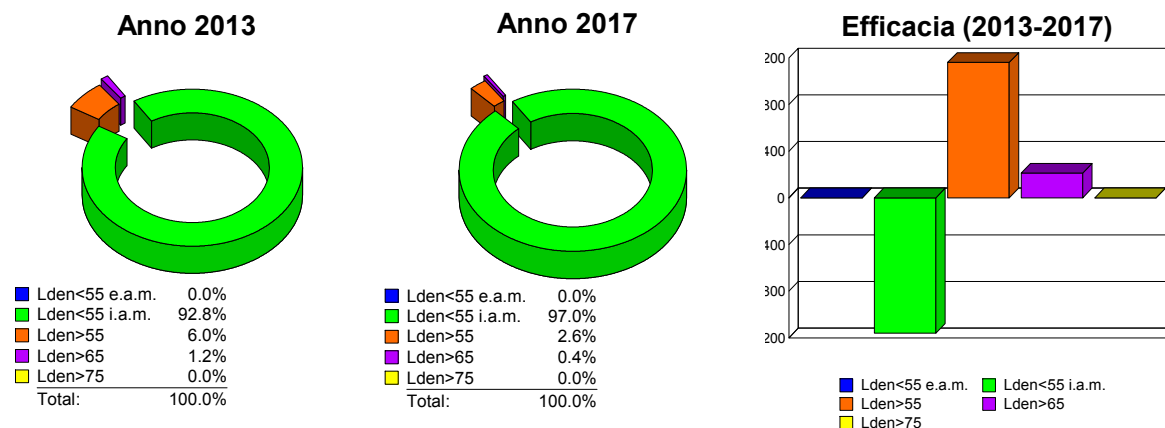
Sintesi Territoriale

	Territorio comunale Interno ambito di mappatura	Territorio comunale Esterno ambito di mappatura	Autostrada A10 Interno ambito di mappatura
Popolazione residente	27834	-	461455
Superficie territoriale [km2]	5.635	5.518	230.886
Edifici residenziali	1317	7808	28697



Efficacia del piano d'azione

Popolazione Esposta	Lden < 55 Esterno a.m.	Lden < 55 Interno a.m.	Lden > 55	Lden > 65	Lden > 75
Anno 2013	-	25839	1995	330	0
Anno 2017	-	27000	834	118	0
Efficacia (2013-2017)	-	-1161	1161	212	0

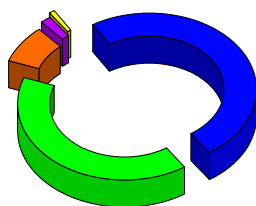




COMUNE DI CERIALE

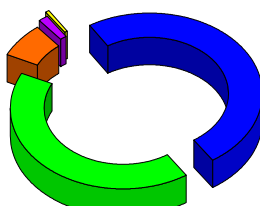
<i>Superficie Territoriale</i>	Lden < 55 Esterno a.m.	Lden < 55 Interno a.m.	Lden > 55	Lden > 65	Lden >75
Anno 2013	5.518	4.462	1.173	0.275	0.084
Anno 2017	5.518	4.642	0.993	0.216	0.076
Efficacia (2013-2017)	0	-0.180	0.180	0.059	0.008

Anno 2013



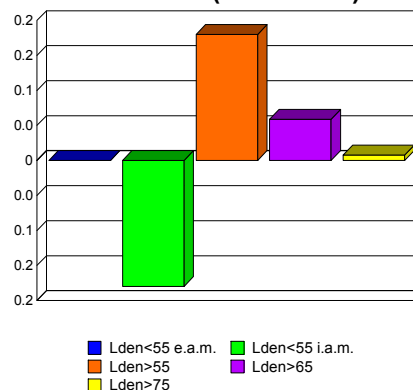
Lden<55 e.a.m.	49.5%
Lden<55 i.a.m.	40.0%
Lden>55	8.1%
Lden>65	1.7%
Lden>75	0.8%
Total:	100.0%

Anno 2017



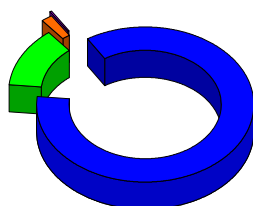
Lden<55 e.a.m.	49.5%
Lden<55 i.a.m.	41.6%
Lden>55	7.0%
Lden>65	1.3%
Lden>75	0.7%
Total:	100.0%

Efficacia (2013-2017)



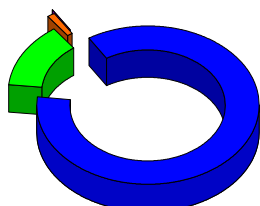
<i>Edifici Residenziali</i>	Lden < 55 Esterno a.m.	Lden < 55 Interno a.m.	Lden > 55	Lden > 65	Lden >75
Anno 2013	7808	1128	189	20	0
Anno 2017	7808	1206	111	4	0
Efficacia (2013-2017)	0	-78	78	16	0

Anno 2013



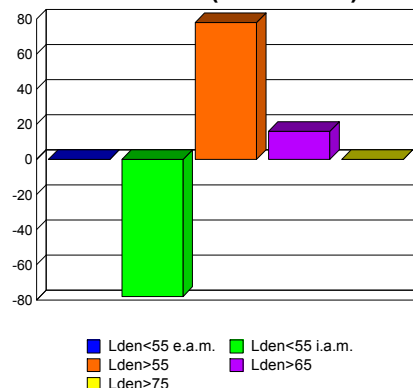
Lden<55 e.a.m.	85.6%
Lden<55 i.a.m.	12.4%
Lden>55	1.9%
Lden>65	0.2%
Lden>75	0.0%
Total:	100.0%

Anno 2017



Lden<55 e.a.m.	85.6%
Lden<55 i.a.m.	13.2%
Lden>55	1.2%
Lden>65	0.0%
Lden>75	0.0%
Total:	100.0%

Efficacia (2013-2017)

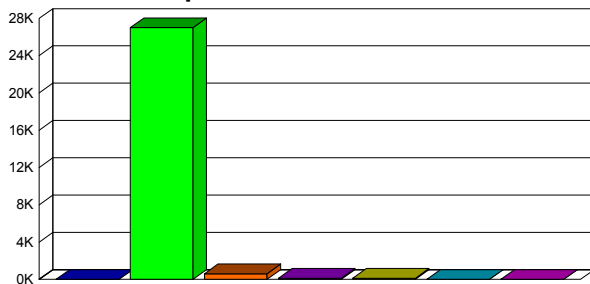




COMUNE DI CERIALE

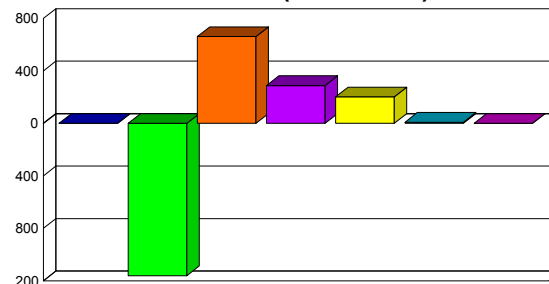
<i>Popolazione esposta per classi di Lden</i>	Lden < 55 Esterno a.m.	Lden < 55 Interno a.m.	55-59	60-64	65-69	70-75	>75
Anno 2013	-	25840	1264	401	320	9	0
Anno 2017	-	27000	603	113	118	0	0
Efficacia (2013-2017)	-	-1160	661	288	202	9	0

Popolazione Anno 2013



■ Lden<55 e.a.m. ■ Lden<55 i.a.m. ■ 55-59
 ■ 60-64 ■ 65-69 ■ 70-75
 ■ >75

Efficacia (2013-2017)



■ Lden<55 e.a.m. ■ Lden<55 i.a.m. ■ 55-59
 ■ 60-64 ■ 65-69 ■ 70-75
 ■ >75

**Popolazione in edifici
con facciate silenti**

	55-59	60-64	65-69	70-75	>75
Anno 2013	0	0	0	0	0
Anno 2017	0	0	0	0	0
Efficacia (2013-2017)	0	0	0	0	0

**Popolazione in edifici
con insonorizzazione**

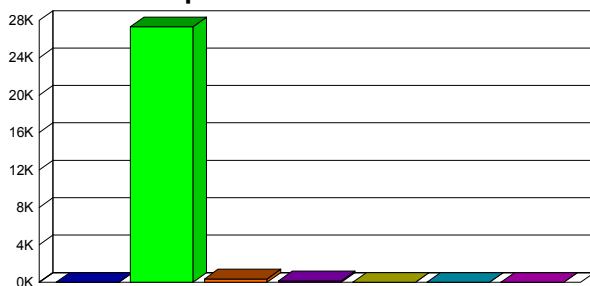
	55-59	60-64	65-69	70-75	>75
Anno 2013	0	0	0	0	0
Anno 2017	0	0	0	0	0
Efficacia (2013-2017)	0	0	0	0	0



COMUNE DI CERIALE

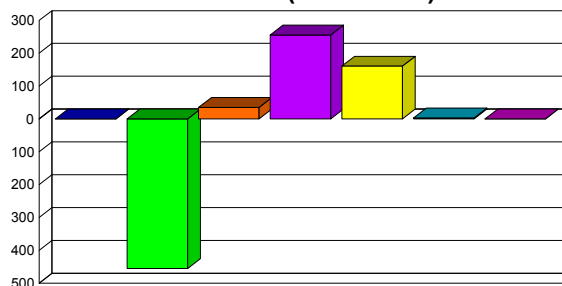
<i>Popolazione esposta per classi di Lnight</i>	Lnight < 50 Esterno a.m.	Lnight < 50 Interno a.m.	50-54	55-59	60-64	65-69	>70
Anno 2013	-	26863	405	402	161	3	0
Anno 2017	-	27318	370	146	0	0	0
Efficacia (2013-2017)	-	-455	35	256	161	3	0

Popolazione Anno 2013



■ Lnight<50 e.a.m. ■ Lnight<50 i.a.m. ■ 50-54
 ■ 55-59 ■ 60-64 ■ 65-69
 ■ >70

Efficacia (2013-2017)



■ Lnight<50 e.a.m. ■ Lnight<50 i.a.m. ■ 50-54
 ■ 55-59 ■ 60-64 ■ 65-69
 ■ >70

Popolazione in edifici con facciate silenziose

	50-54	55-59	60-64	65-69	>70
Anno 2013	9	0	0	0	0
Anno 2017	9	0	0	0	0
Efficacia (2013-2017)	0	0	0	0	0

Popolazione in edifici con insonorizzazione

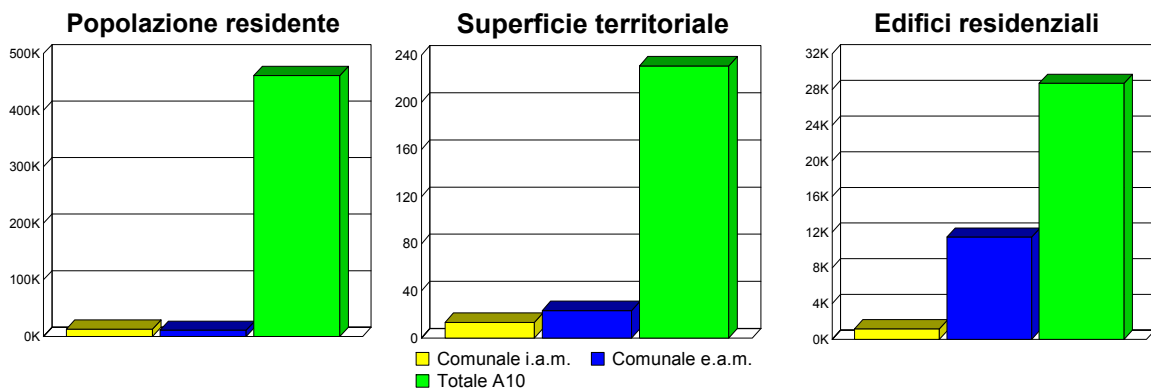
	50-54	55-59	60-64	65-69	>70
Anno 2013	0	0	0	0	0
Anno 2017	0	0	0	0	0
Efficacia (2013-2017)	0	0	0	0	0



COMUNE DI ALBENGA

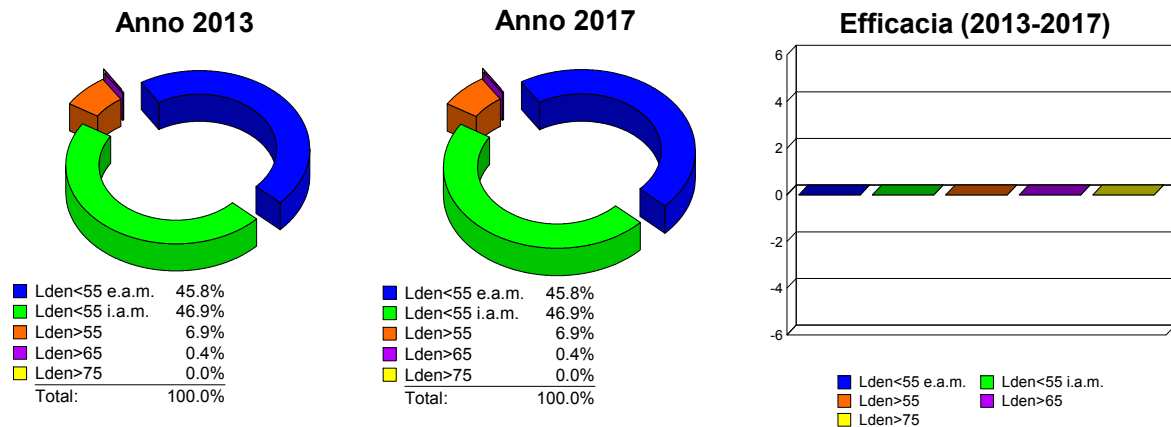
Sintesi Territoriale

	Territorio comunale Interno ambito di mappatura	Territorio comunale Esterno ambito di mappatura	Autostrada A10 Interno ambito di mappatura
Popolazione residente	12804	10822	461455
Superficie territoriale [km2]	13.293	23.283	230.886
Edifici residenziali	1174	11458	28697



Efficacia del piano d'azione

Popolazione Esposta	Lden < 55 Esterno a.m.	Lden < 55 Interno a.m.	Lden > 55	Lden > 65	Lden > 75
Anno 2013	10822	11087	1717	89	4
Anno 2017	10822	11087	1717	89	4
Efficacia (2013-2017)	-	0	0	0	0

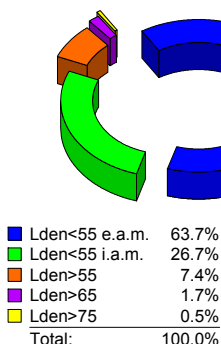




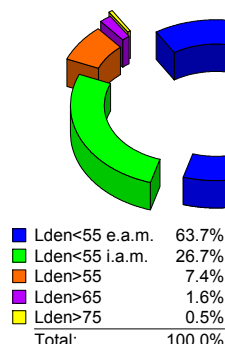
COMUNE DI ALBENGA

<i>Superficie Territoriale</i>	Lden < 55 Esterno a.m.	Lden < 55 Interno a.m.	Lden > 55	Lden > 65	Lden >75
Anno 2013	23.283	9.779	3.514	0.790	0.186
Anno 2017	23.283	9.783	3.510	0.789	0.186
Efficacia (2013-2017)	0	-0.004	0.004	0.001	0

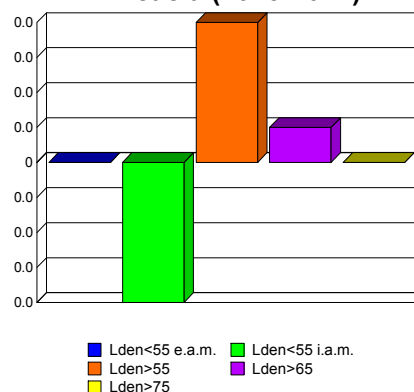
Anno 2013



Anno 2017

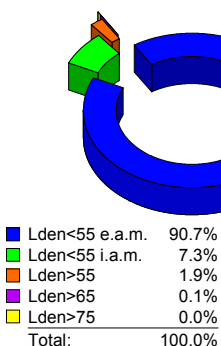


Efficacia (2013-2017)

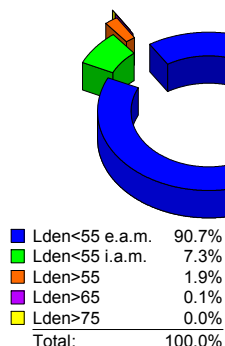


<i>Edifici Residenziali</i>	Lden < 55 Esterno a.m.	Lden < 55 Interno a.m.	Lden > 55	Lden > 65	Lden >75
Anno 2013	11458	924	250	14	1
Anno 2017	11458	924	250	14	1
Efficacia (2013-2017)	0	0	0	0	0

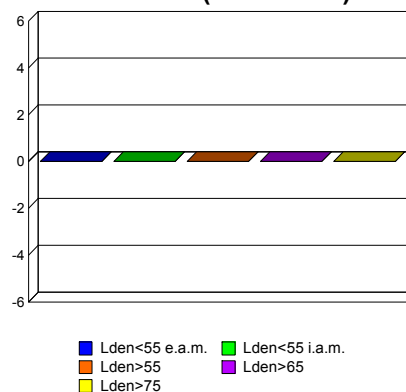
Anno 2013



Anno 2017



Efficacia (2013-2017)

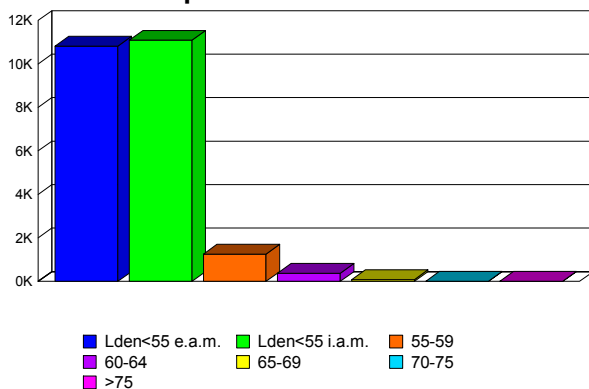




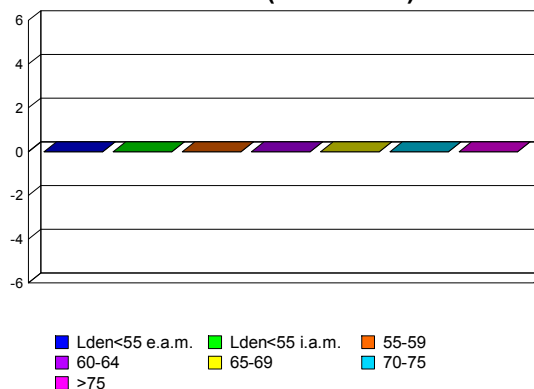
COMUNE DI ALBENGA

<i>Popolazione esposta per classi di Lden</i>	Lden < 55 Esterno a.m.	Lden < 55 Interno a.m.	55-59	60-64	65-69	70-75	>75
Anno 2013	10822	11087	1256	372	78	7	4
Anno 2017	10822	11087	1256	372	78	7	4
Efficacia (2013-2017)	-	0	0	0	0	0	0

Popolazione Anno 2013



Efficacia (2013-2017)



*Popolazione in edifici
con facciate silenti*

	55-59	60-64	65-69	70-75	>75
Anno 2013	0	0	0	0	0
Anno 2017	0	0	0	0	0
Efficacia (2013-2017)	0	0	0	0	0

*Popolazione in edifici
con insonorizzazione*

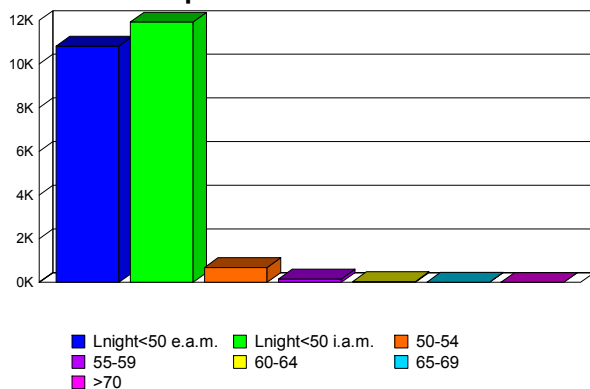
	55-59	60-64	65-69	70-75	>75
Anno 2013	0	0	0	0	0
Anno 2017	0	0	0	0	0
Efficacia (2013-2017)	0	0	0	0	0



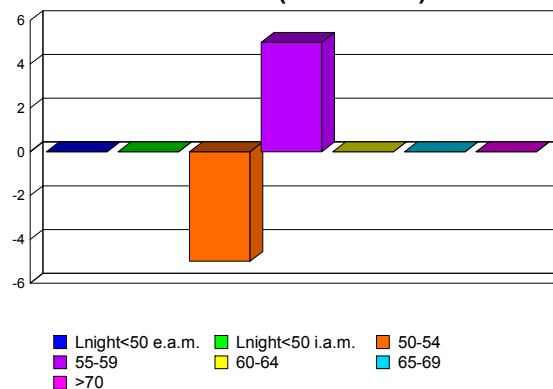
COMUNE DI ALBENGA

<i>Popolazione esposta per classi di Lnight</i>	Lnight < 50 Esterno a.m.	Lnight < 50 Interno a.m.	50-54	55-59	60-64	65-69	>70
Anno 2013	10822	11924	680	163	33	4	0
Anno 2017	10822	11924	685	158	33	4	0
Efficacia (2013-2017)	-	0	-5	5	0	0	0

Popolazione Anno 2013



Efficacia (2013-2017)



*Popolazione in edifici
con facciate silenziose*

	50-54	55-59	60-64	65-69	>70
Anno 2013	0	0	0	0	0
Anno 2017	0	0	0	0	0
Efficacia (2013-2017)	0	0	0	0	0

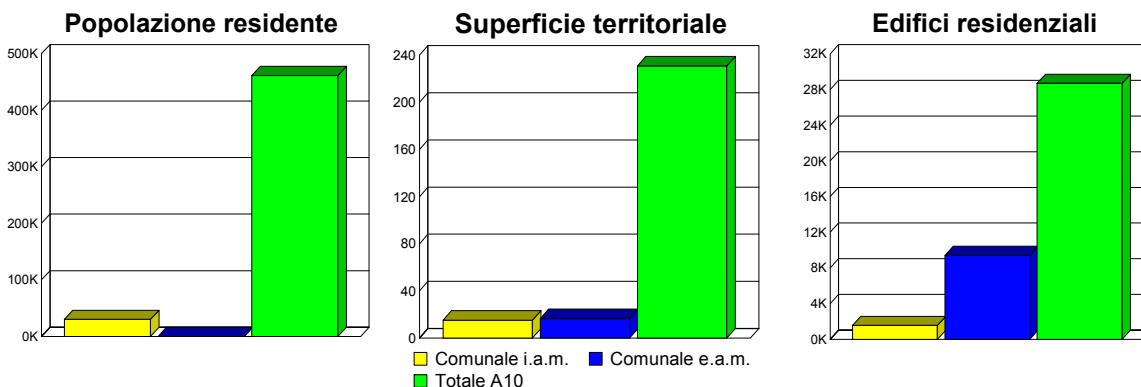
*Popolazione in edifici
con insonorizzazione*

	50-54	55-59	60-64	65-69	>70
Anno 2013	0	0	0	0	0
Anno 2017	0	0	0	0	0
Efficacia (2013-2017)	0	0	0	0	0

COMUNE DI ANDORA

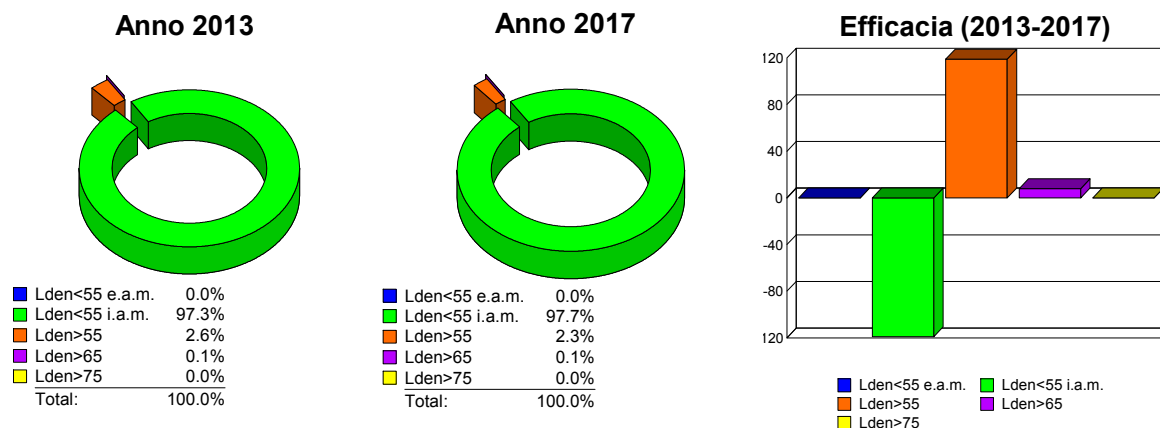
Sintesi Territoriale

	Territorio comunale Interno ambito di mappatura	Territorio comunale Esterno ambito di mappatura	Autostrada A10 Interno ambito di mappatura
Popolazione residente	29989	-	461455
Superficie territoriale [km2]	15.249	16.550	230.886
Edifici residenziali	1550	9400	28697



Efficacia del piano d'azione

<i>Popolazione Esposta</i>	Lden < 55 Esterno a.m.	Lden < 55 Interno a.m.	Lden > 55	Lden > 65	Lden > 75
Anno 2013	-	29168	821	29	0
Anno 2017	-	29287	702	21	0
Efficacia (2013-2017)	-	-119	119	8	0

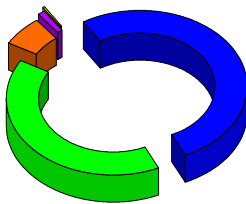




COMUNE DI ANDORA

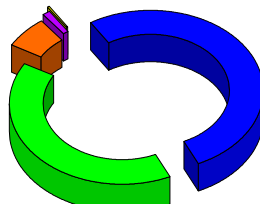
<i>Superficie Territoriale</i>	Lden < 55 Esterno a.m.	Lden < 55 Interno a.m.	Lden > 55	Lden > 65	Lden >75
Anno 2013	16.550	12.781	2.468	0.465	0.119
Anno 2017	16.550	12.801	2.448	0.466	0.119
Efficacia (2013-2017)	0	-0.020	0.020	-0.001	0

Anno 2013



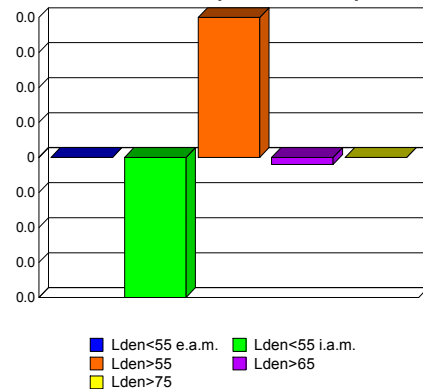
Lden<55 e.a.m.	52.0%
Lden<55 i.a.m.	40.2%
Lden>55	6.3%
Lden>65	1.1%
Lden>75	0.4%
Total:	100.0%

Anno 2017



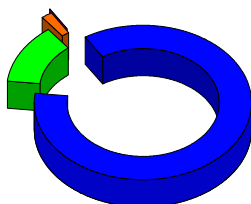
Lden<55 e.a.m.	52.0%
Lden<55 i.a.m.	40.3%
Lden>55	6.2%
Lden>65	1.1%
Lden>75	0.4%
Total:	100.0%

Efficacia (2013-2017)



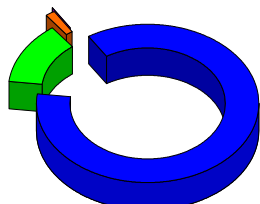
<i>Edifici Residenziali</i>	Lden < 55 Esterno a.m.	Lden < 55 Interno a.m.	Lden > 55	Lden > 65	Lden >75
Anno 2013	9400	1370	180	5	0
Anno 2017	9400	1387	163	4	0
Efficacia (2013-2017)	0	-17	17	1	0

Anno 2013



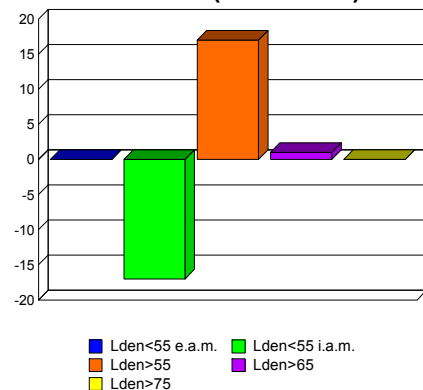
Lden<55 e.a.m.	85.8%
Lden<55 i.a.m.	12.5%
Lden>55	1.6%
Lden>65	0.0%
Lden>75	0.0%
Total:	100.0%

Anno 2017



Lden<55 e.a.m.	85.8%
Lden<55 i.a.m.	12.7%
Lden>55	1.5%
Lden>65	0.0%
Lden>75	0.0%
Total:	100.0%

Efficacia (2013-2017)

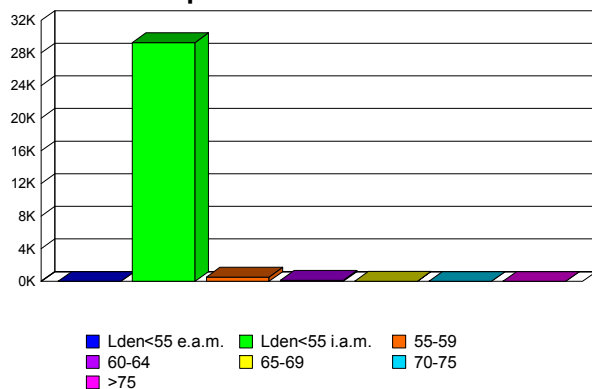




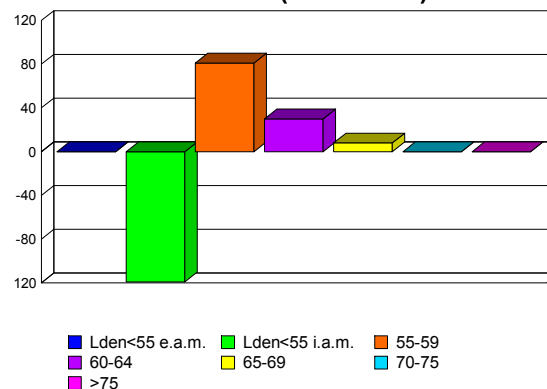
COMUNE DI ANDORA

<i>Popolazione esposta per classi di Lden</i>	Lden < 55 Esterno a.m.	Lden < 55 Interno a.m.	55-59	60-64	65-69	70-75	>75
Anno 2013	-	29168	626	166	29	0	0
Anno 2017	-	29287	545	136	21	0	0
Efficacia (2013-2017)	-	-119	81	30	8	0	0

Popolazione Anno 2013



Efficacia (2013-2017)



**Popolazione in edifici
con facciate silenti**

	55-59	60-64	65-69	70-75	>75
Anno 2013	0	0	0	0	0
Anno 2017	0	0	0	0	0
Efficacia (2013-2017)	0	0	0	0	0

**Popolazione in edifici
con insonorizzazione**

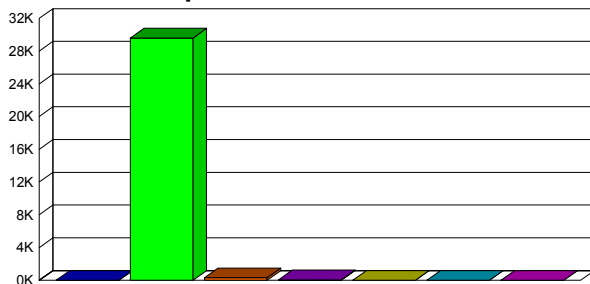
	55-59	60-64	65-69	70-75	>75
Anno 2013	0	0	0	0	0
Anno 2017	0	0	0	0	0
Efficacia (2013-2017)	0	0	0	0	0



COMUNE DI ANDORA

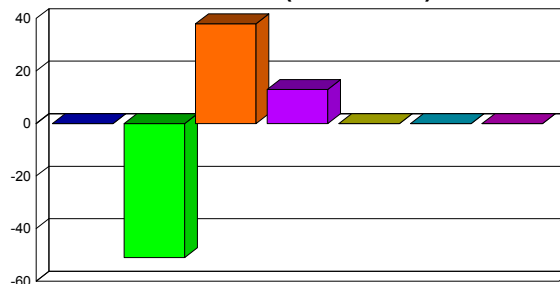
<i>Popolazione esposta per classi di Lnight</i>	Lnight < 50 Esterno a.m.	Lnight < 50 Interno a.m.	50-54	55-59	60-64	65-69	>70
Anno 2013	-	29558	348	83	0	0	0
Anno 2017	-	29609	310	70	0	0	0
Efficacia (2013-2017)	-	-51	38	13	0	0	0

Popolazione Anno 2013



■ Lnight<50 e.a.m. ■ Lnight<50 i.a.m. ■ 50-54
 ■ 55-59 ■ 60-64 ■ 65-69
 ■ >70

Efficacia (2013-2017)



■ Lnight<50 e.a.m. ■ Lnight<50 i.a.m. ■ 50-54
 ■ 55-59 ■ 60-64 ■ 65-69
 ■ >70

*Popolazione in edifici
con facciate silenziose*

	50-54	55-59	60-64	65-69	>70
Anno 2013	0	13	0	0	0
Anno 2017	0	13	0	0	0
Efficacia (2013-2017)	0	0	0	0	0

*Popolazione in edifici
con insonorizzazione*

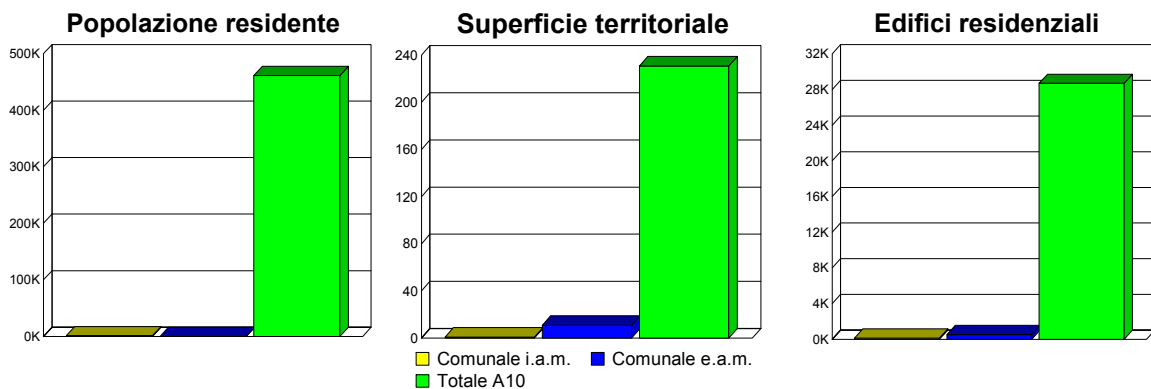
	50-54	55-59	60-64	65-69	>70
Anno 2013	0	0	0	0	0
Anno 2017	0	0	0	0	0
Efficacia (2013-2017)	0	0	0	0	0



COMUNE DI DIANO SAN PIETRO

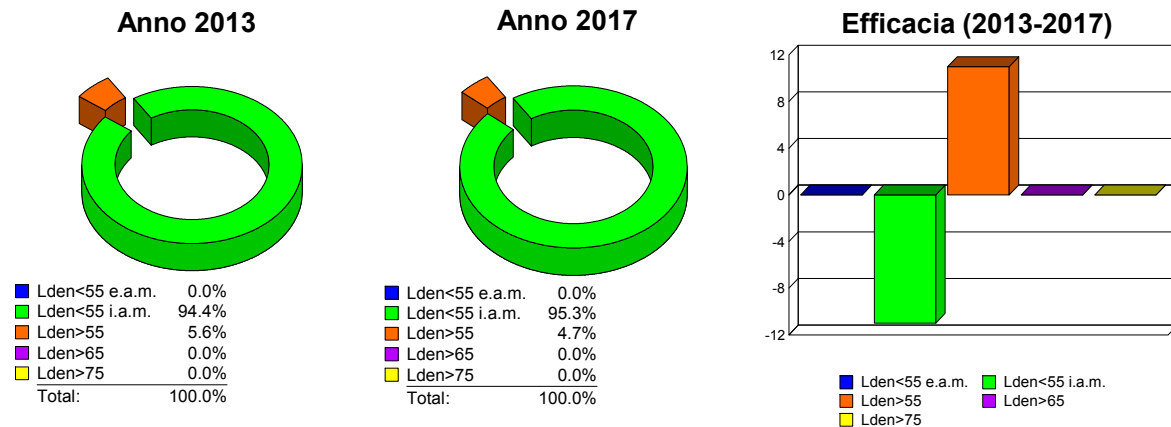
Sintesi Territoriale

	Territorio comunale Interno ambito di mappatura	Territorio comunale Esterno ambito di mappatura	Autostrada A10 Interno ambito di mappatura
Popolazione residente	1193	-	461455
Superficie territoriale [km2]	0.950	10.962	230.886
Edifici residenziali	140	518	28697



Efficacia del piano d'azione

Popolazione Esposta	Lden < 55 Esterno a.m.	Lden < 55 Interno a.m.	Lden > 55	Lden > 65	Lden > 75
Anno 2013	-	1126	67	0	0
Anno 2017	-	1137	56	0	0
Efficacia (2013-2017)	-	-11	11	0	0

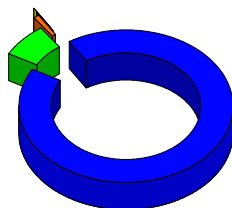




COMUNE DI DIANO SAN PIETRO

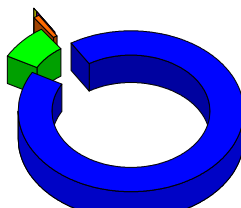
<i>Superficie Territoriale</i>	Lden < 55 Esterno a.m.	Lden < 55 Interno a.m.	Lden > 55	Lden > 65	Lden >75
Anno 2013	10.962	0.838	0.112	0.010	0.001
Anno 2017	10.962	0.842	0.108	0.010	0.001
Efficacia (2013-2017)	0	-0.004	0.004	0	0

Anno 2013



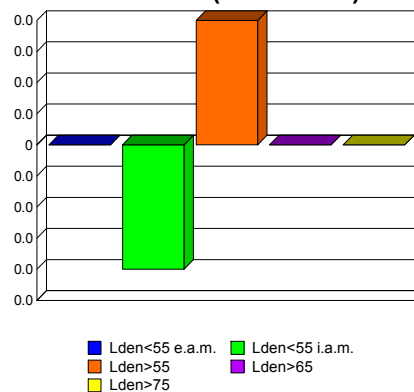
Lden<55 e.a.m.	92.0%
Lden<55 i.a.m.	7.0%
Lden>55	0.9%
Lden>65	0.1%
Lden>75	0.0%
Total:	100.0%

Anno 2017



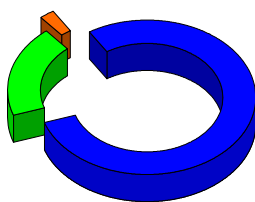
Lden<55 e.a.m.	92.0%
Lden<55 i.a.m.	7.1%
Lden>55	0.8%
Lden>65	0.1%
Lden>75	0.0%
Total:	100.0%

Efficacia (2013-2017)



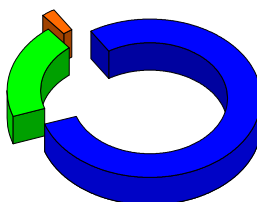
<i>Edifici Residenziali</i>	Lden < 55 Esterno a.m.	Lden < 55 Interno a.m.	Lden > 55	Lden > 65	Lden >75
Anno 2013	518	126	14	0	0
Anno 2017	518	128	12	0	0
Efficacia (2013-2017)	0	-2	2	0	0

Anno 2013



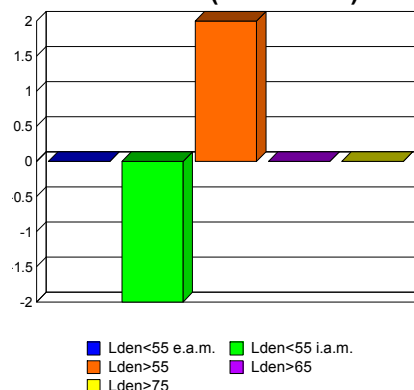
Lden<55 e.a.m.	78.7%
Lden<55 i.a.m.	19.1%
Lden>55	2.1%
Lden>65	0.0%
Lden>75	0.0%
Total:	100.0%

Anno 2017



Lden<55 e.a.m.	78.7%
Lden<55 i.a.m.	19.5%
Lden>55	1.8%
Lden>65	0.0%
Lden>75	0.0%
Total:	100.0%

Efficacia (2013-2017)

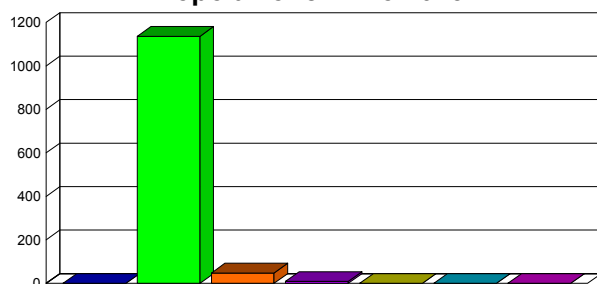




COMUNE DI DIANO SAN PIETRO

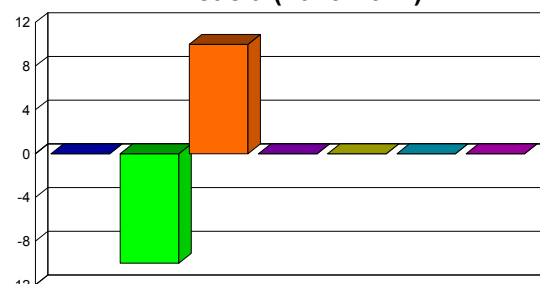
<i>Popolazione esposta per classi di Lden</i>	Lden < 55 Esterno a.m.	Lden < 55 Interno a.m.	55-59	60-64	65-69	70-75	>75
Anno 2013	-	1126	58	9	0	0	0
Anno 2017	-	1136	48	9	0	0	0
Efficacia (2013-2017)	-	-10	10	0	0	0	0

Popolazione Anno 2013



■ Lden<55 e.a.m. ■ Lden<55 i.a.m. ■ 55-59
 ■ 60-64 ■ 65-69 ■ 70-75
 ■ >75

Efficacia (2013-2017)



■ Lden<55 e.a.m. ■ Lden<55 i.a.m. ■ 55-59
 ■ 60-64 ■ 65-69 ■ 70-75
 ■ >75

**Popolazione in edifici
con facciate silenti**

	55-59	60-64	65-69	70-75	>75
Anno 2013	0	0	0	0	0
Anno 2017	0	0	0	0	0
Efficacia (2013-2017)	0	0	0	0	0

**Popolazione in edifici
con insonorizzazione**

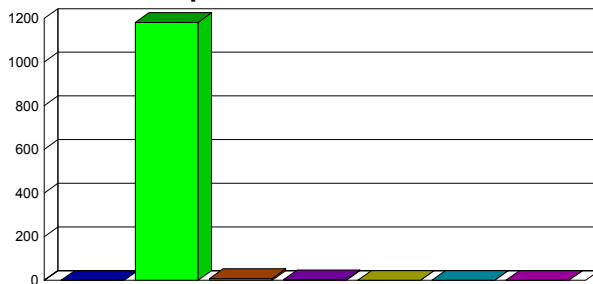
	55-59	60-64	65-69	70-75	>75
Anno 2013	0	0	0	0	0
Anno 2017	0	0	0	0	0
Efficacia (2013-2017)	0	0	0	0	0



COMUNE DI DIANO SAN PIETRO

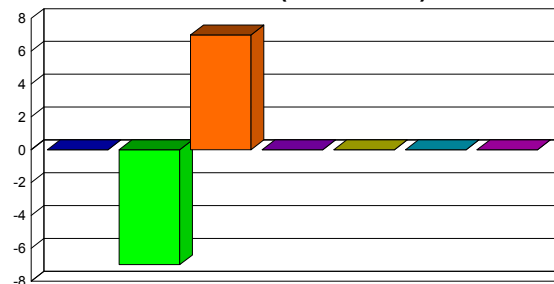
<i>Popolazione esposta per classi di Lnight</i>	Lnight < 50 Esterno a.m.	Lnight < 50 Interno a.m.	50-54	55-59	60-64	65-69	>70
Anno 2013	-	1175	15	3	0	0	0
Anno 2017	-	1182	8	3	0	0	0
Efficacia (2013-2017)	-	-7	7	0	0	0	0

Popolazione Anno 2013



■ Lnight<50 e.a.m. ■ Lnight<50 i.a.m. ■ 50-54
 ■ 55-59 ■ 60-64 ■ 65-69
 ■ >70

Efficacia (2013-2017)



■ Lnight<50 e.a.m. ■ Lnight<50 i.a.m. ■ 50-54
 ■ 55-59 ■ 60-64 ■ 65-69
 ■ >70

<i>Popolazione in edifici con facciate silenziose</i>	50-54	55-59	60-64	65-69	>70
Anno 2013	0	0	0	0	0
Anno 2017	0	0	0	0	0
Efficacia (2013-2017)	0	0	0	0	0

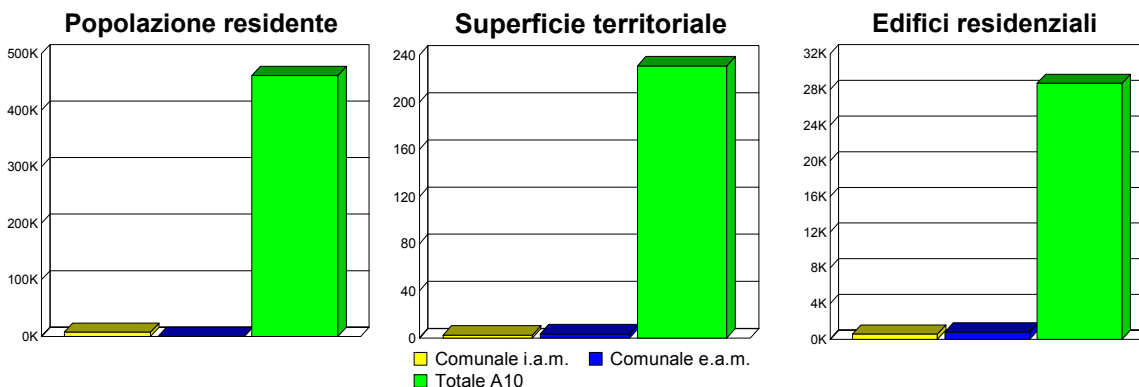
<i>Popolazione in edifici con insonorizzazione</i>	50-54	55-59	60-64	65-69	>70
Anno 2013	0	0	0	0	0
Anno 2017	0	0	0	0	0
Efficacia (2013-2017)	0	0	0	0	0



COMUNE DI DIANO CASTELLO

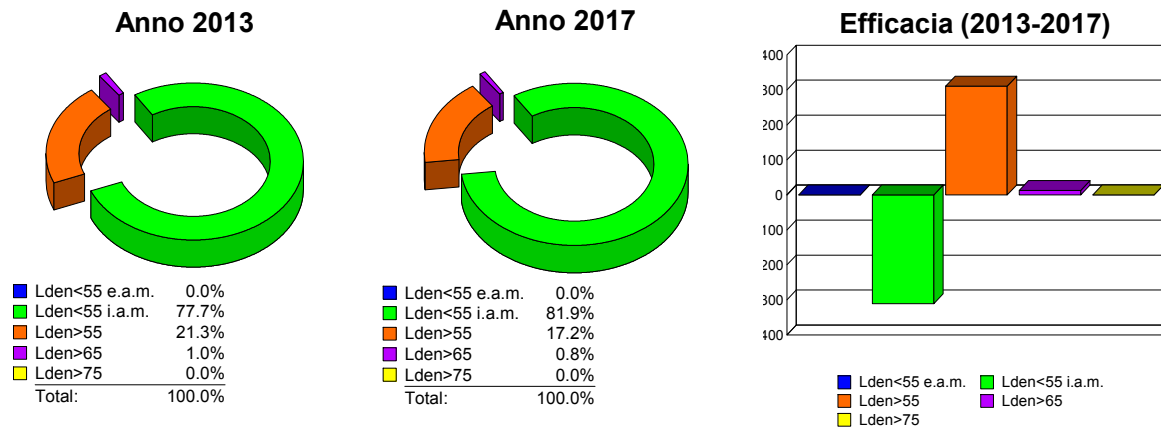
Sintesi Territoriale

	Territorio comunale Interno ambito di mappatura	Territorio comunale Esterno ambito di mappatura	Autostrada A10 Interno ambito di mappatura
Popolazione residente	7414	-	461455
Superficie territoriale [km2]	2.453	3.660	230.886
Edifici residenziali	580	827	28697



Efficacia del piano d'azione

Popolazione Esposta	Lden < 55 Esterno a.m.	Lden < 55 Interno a.m.	Lden > 55	Lden > 65	Lden > 75
Anno 2013	-	5764	1650	74	0
Anno 2017	-	6075	1339	61	0
Efficacia (2013-2017)	-	-311	311	13	0

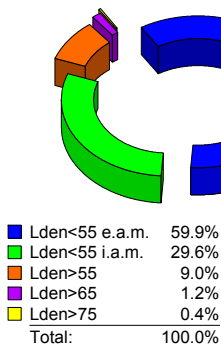




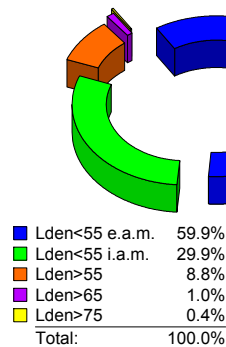
COMUNE DI DIANO CASTELLO

<i>Superficie Territoriale</i>	Lden < 55 Esterno a.m.	Lden < 55 Interno a.m.	Lden > 55	Lden > 65	Lden >75
Anno 2013	3.660	1.807	0.646	0.095	0.024
Anno 2017	3.660	1.830	0.623	0.083	0.024
Efficacia (2013-2017)	0	-0.023	0.023	0.012	0

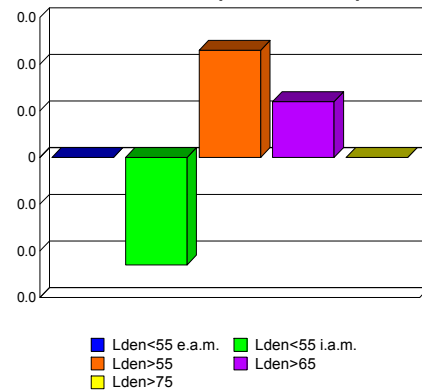
Anno 2013



Anno 2017

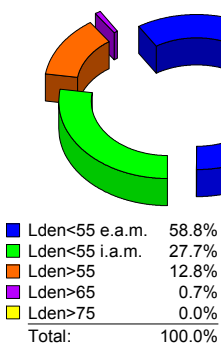


Efficacia (2013-2017)

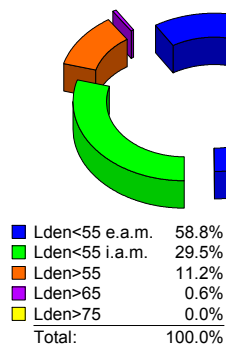


<i>Edifici Residenziali</i>	Lden < 55 Esterno a.m.	Lden < 55 Interno a.m.	Lden > 55	Lden > 65	Lden >75
Anno 2013	827	390	190	10	0
Anno 2017	827	415	165	8	0
Efficacia (2013-2017)	0	-25	25	2	0

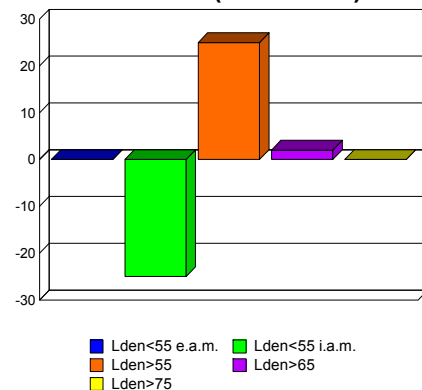
Anno 2013



Anno 2017



Efficacia (2013-2017)

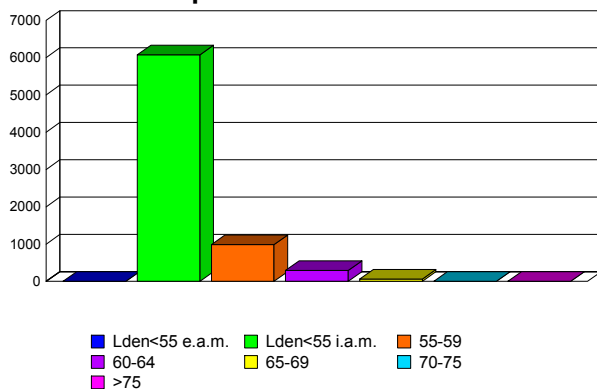




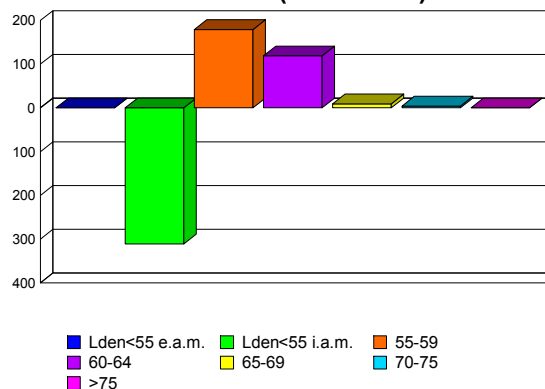
COMUNE DI DIANO CASTELLO

<i>Popolazione esposta per classi di Lden</i>	Lden < 55 Esterno a.m.	Lden < 55 Interno a.m.	55-59	60-64	65-69	70-75	>75
Anno 2013	-	5764	1164	412	70	4	0
Anno 2017	-	6075	985	293	61	0	0
Efficacia (2013-2017)	-	-311	179	119	9	4	0

Popolazione Anno 2013



Efficacia (2013-2017)



<i>Popolazione in edifici con facciate silenti</i>	55-59	60-64	65-69	70-75	>75
Anno 2013	0	0	0	0	0
Anno 2017	0	0	0	0	0
Efficacia (2013-2017)	0	0	0	0	0

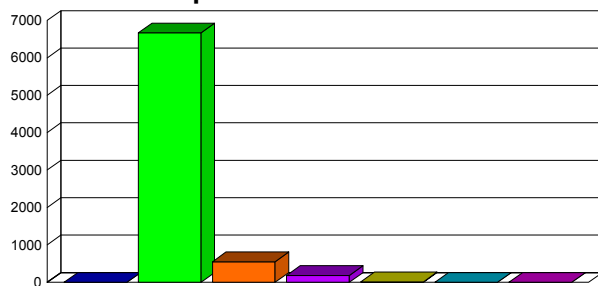
<i>Popolazione in edifici con insonorizzazione</i>	55-59	60-64	65-69	70-75	>75
Anno 2013	0	0	0	0	0
Anno 2017	0	0	0	0	0
Efficacia (2013-2017)	0	0	0	0	0



COMUNE DI DIANO CASTELLO

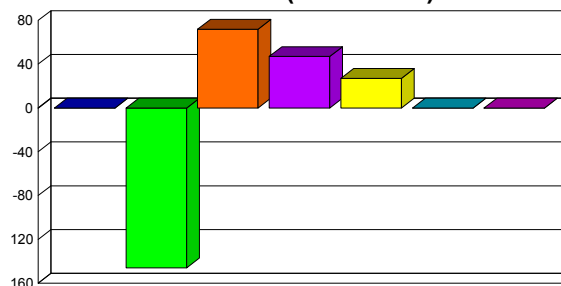
<i>Popolazione esposta per classi di Lnight</i>	Lnight < 50 Esterno a.m.	Lnight < 50 Interno a.m.	50-54	55-59	60-64	65-69	>70
Anno 2013	-	6521	620	230	43	0	0
Anno 2017	-	6667	548	183	16	0	0
Efficacia (2013-2017)	-	-146	72	47	27	0	0

Popolazione Anno 2013



■ Lnight<50 e.a.m. ■ Lnight<50 i.a.m. ■ 50-54
 ■ 55-59 ■ 60-64 ■ 65-69
 ■ >70

Efficacia (2013-2017)



■ Lnight<50 e.a.m. ■ Lnight<50 i.a.m. ■ 50-54
 ■ 55-59 ■ 60-64 ■ 65-69
 ■ >70

**Popolazione in edifici
con facciate silenziose**

	50-54	55-59	60-64	65-69	>70
Anno 2013	14	6	0	0	0
Anno 2017	14	6	0	0	0
Efficacia (2013-2017)	0	0	0	0	0

**Popolazione in edifici
con insonorizzazione**

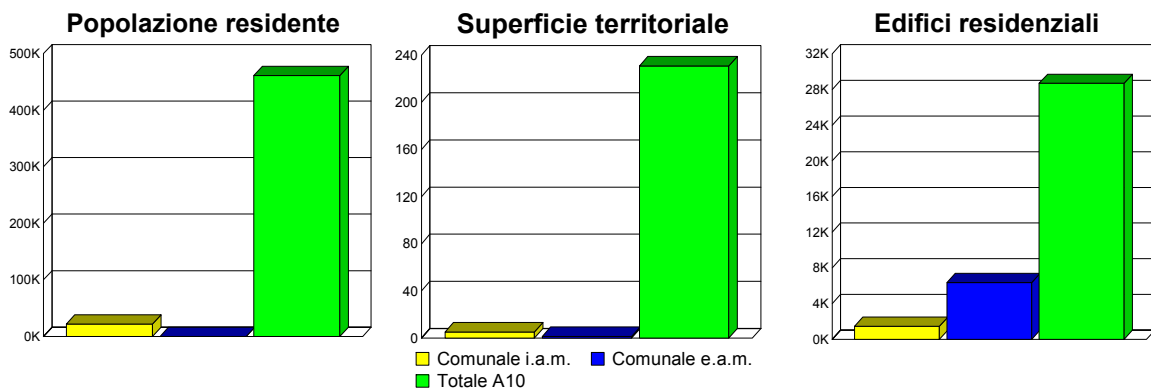
	50-54	55-59	60-64	65-69	>70
Anno 2013	0	0	0	0	0
Anno 2017	0	0	0	0	0
Efficacia (2013-2017)	0	0	0	0	0



COMUNE DI DIANO MARINA

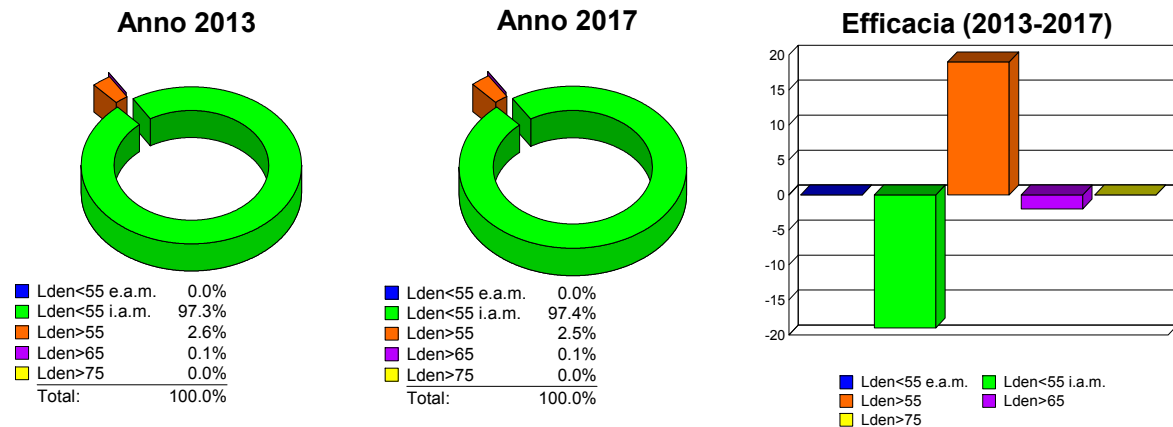
Sintesi Territoriale

	Territorio comunale Interno ambito di mappatura	Territorio comunale Esterno ambito di mappatura	Autostrada A10 Interno ambito di mappatura
Popolazione residente	21906	-	461455
Superficie territoriale [km2]	5.232	1.441	230.886
Edifici residenziali	1448	6365	28697



Efficacia del piano d'azione

Popolazione Esposta	Lden < 55 Esterno a.m.	Lden < 55 Interno a.m.	Lden > 55	Lden > 65	Lden > 75
Anno 2013	-	21308	598	26	0
Anno 2017	-	21327	579	28	0
Efficacia (2013-2017)	-	-19	19	-2	0

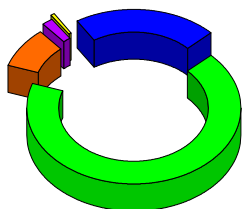




COMUNE DI DIANO MARINA

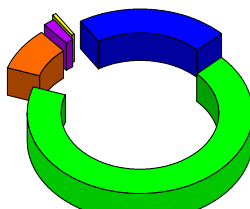
<i>Superficie Territoriale</i>	Lden < 55 Esterno a.m.	Lden < 55 Interno a.m.	Lden > 55	Lden > 65	Lden >75
Anno 2013	1.441	4.502	0.730	0.155	0.044
Anno 2017	1.441	4.507	0.725	0.157	0.044
Efficacia (2013-2017)	0	-0.005	0.005	-0.002	0

Anno 2013



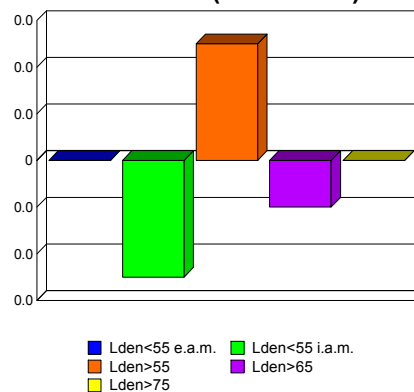
Lden<55 e.a.m.	21.6%
Lden<55 i.a.m.	67.5%
Lden>55	8.6%
Lden>65	1.7%
Lden>75	0.7%
Total:	100.0%

Anno 2017



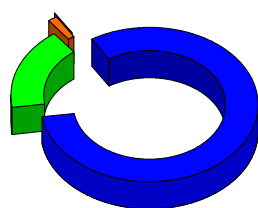
Lden<55 e.a.m.	21.6%
Lden<55 i.a.m.	67.5%
Lden>55	8.5%
Lden>65	1.7%
Lden>75	0.7%
Total:	100.0%

Efficacia (2013-2017)



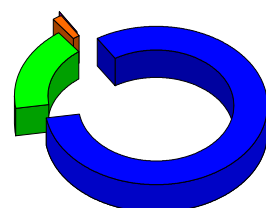
<i>Edifici Residenziali</i>	Lden < 55 Esterno a.m.	Lden < 55 Interno a.m.	Lden > 55	Lden > 65	Lden >75
Anno 2013	6365	1337	111	8	0
Anno 2017	6365	1339	109	9	0
Efficacia (2013-2017)	0	-2	2	-1	0

Anno 2013



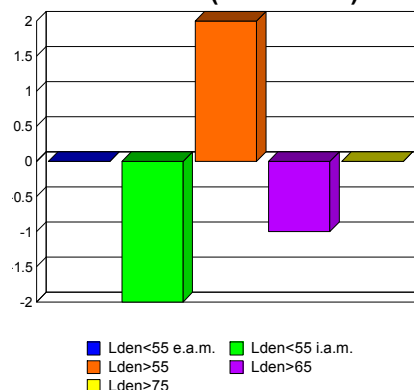
Lden<55 e.a.m.	81.5%
Lden<55 i.a.m.	17.1%
Lden>55	1.3%
Lden>65	0.1%
Lden>75	0.0%
Total:	100.0%

Anno 2017



Lden<55 e.a.m.	81.5%
Lden<55 i.a.m.	17.1%
Lden>55	1.3%
Lden>65	0.1%
Lden>75	0.0%
Total:	100.0%

Efficacia (2013-2017)

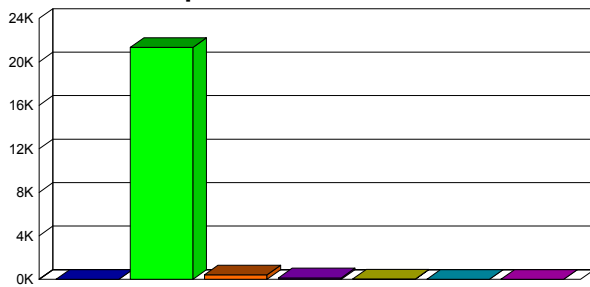




COMUNE DI DIANO MARINA

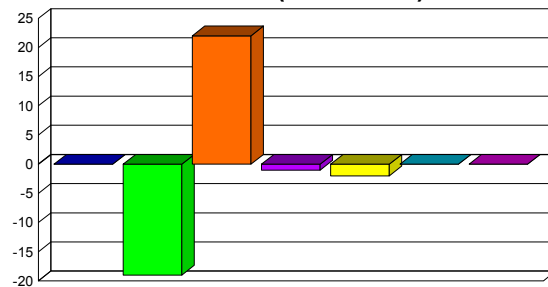
<i>Popolazione esposta per classi di Lden</i>	Lden < 55 Esterno a.m.	Lden < 55 Interno a.m.	55-59	60-64	65-69	70-75	>75
Anno 2013	-	21308	433	139	26	0	0
Anno 2017	-	21327	411	140	28	0	0
Efficacia (2013-2017)	-	-19	22	-1	-2	0	0

Popolazione Anno 2013



■ Lden<55 e.a.m. ■ Lden<55 i.a.m. ■ 55-59
 ■ 60-64 ■ 65-69 ■ 70-75
 ■ >75

Efficacia (2013-2017)



■ Lden<55 e.a.m. ■ Lden<55 i.a.m. ■ 55-59
 ■ 60-64 ■ 65-69 ■ 70-75
 ■ >75

<i>Popolazione in edifici con facciate silenziose</i>	55-59	60-64	65-69	70-75	>75
Anno 2013	0	0	0	0	0
Anno 2017	0	0	0	0	0
Efficacia (2013-2017)	0	0	0	0	0

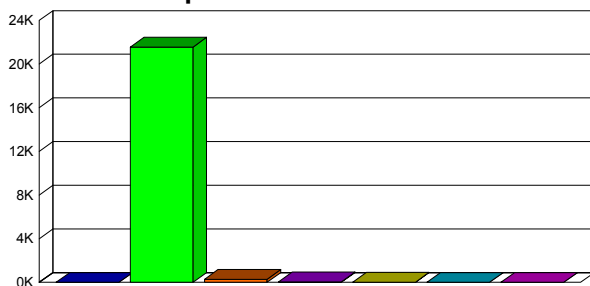
<i>Popolazione in edifici con insonorizzazione</i>	55-59	60-64	65-69	70-75	>75
Anno 2013	0	0	0	0	0
Anno 2017	0	0	0	0	0
Efficacia (2013-2017)	0	0	0	0	0



COMUNE DI DIANO MARINA

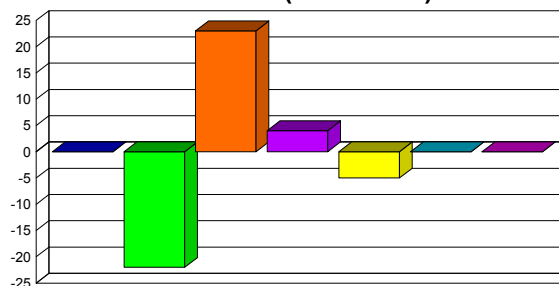
<i>Popolazione esposta per classi di Lnight</i>	Lnight < 50 Esterno a.m.	Lnight < 50 Interno a.m.	50-54	55-59	60-64	65-69	>70
Anno 2013	-	21543	299	59	5	0	0
Anno 2017	-	21565	276	55	10	0	0
Efficacia (2013-2017)	-	-22	23	4	-5	0	0

Popolazione Anno 2013



■ Lnight<50 e.a.m. ■ Lnight<50 i.a.m. ■ 50-54
 ■ 55-59 ■ 60-64 ■ 65-69
 ■ >70

Efficacia (2013-2017)



■ Lnight<50 e.a.m. ■ Lnight<50 i.a.m. ■ 50-54
 ■ 55-59 ■ 60-64 ■ 65-69
 ■ >70

*Popolazione in edifici
con facciate silenziose*

	50-54	55-59	60-64	65-69	>70
Anno 2013	16	3	0	0	0
Anno 2017	16	3	0	0	0
Efficacia (2013-2017)	0	0	0	0	0

*Popolazione in edifici
con insonorizzazione*

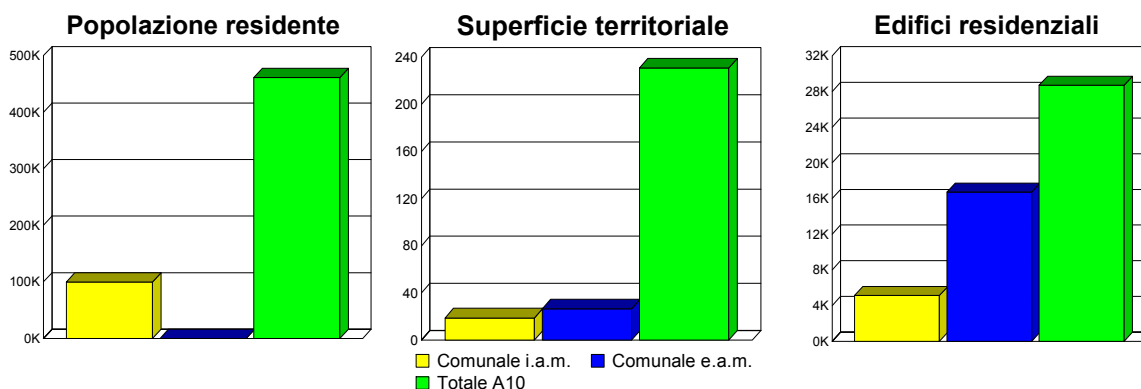
	50-54	55-59	60-64	65-69	>70
Anno 2013	0	0	0	0	0
Anno 2017	0	0	0	0	0
Efficacia (2013-2017)	0	0	0	0	0



COMUNE DI IMPERIA

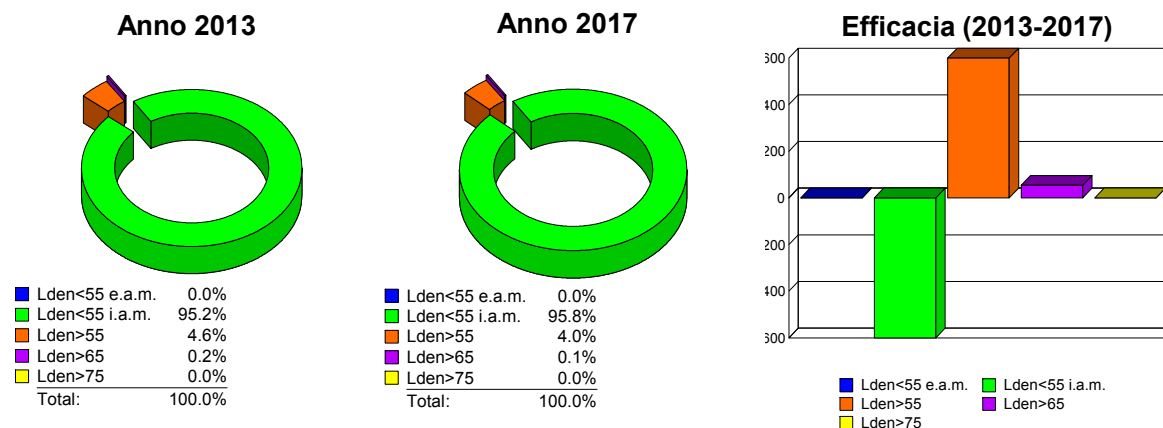
Sintesi Territoriale

	Territorio comunale Interno ambito di mappatura	Territorio comunale Esterno ambito di mappatura	Autostrada A10 Interno ambito di mappatura
Popolazione residente	99879	-	461455
Superficie territoriale [km2]	18.856	26.527	230.886
Edifici residenziali	5121	16711	28697



Efficacia del piano d'azione

Popolazione Esposta	Lden < 55 Esterno a.m.	Lden < 55 Interno a.m.	Lden > 55	Lden > 65	Lden > 75
Anno 2013	-	95103	4776	197	0
Anno 2017	-	95703	4176	143	0
Efficacia (2013-2017)	-	-600	600	54	0

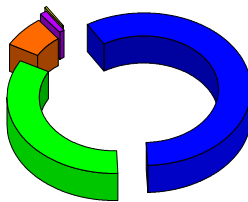




COMUNE DI IMPERIA

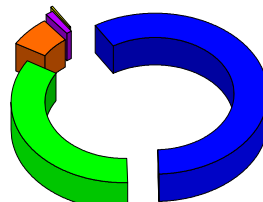
<i>Superficie Territoriale</i>	Lden < 55 Esterno a.m.	Lden < 55 Interno a.m.	Lden > 55	Lden > 65	Lden >75
Anno 2013	26.527	15.247	3.609	0.648	0.142
Anno 2017	26.527	15.427	3.429	0.614	0.140
Efficacia (2013-2017)	0	-0.180	0.180	0.034	0.002

Anno 2013



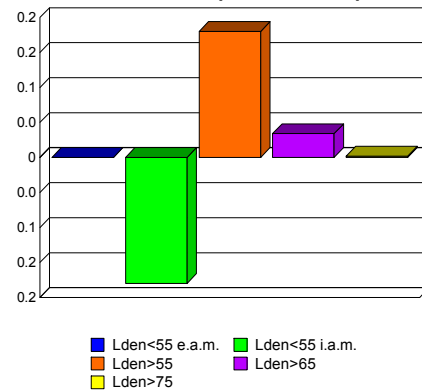
Lden<55 e.a.m.	58.5%
Lden<55 i.a.m.	33.6%
Lden>55	6.5%
Lden>65	1.1%
Lden>75	0.3%
Total:	100.0%

Anno 2017



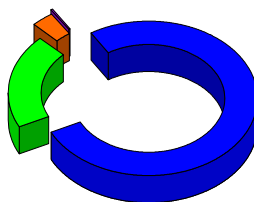
Lden<55 e.a.m.	58.5%
Lden<55 i.a.m.	34.0%
Lden>55	6.2%
Lden>65	1.0%
Lden>75	0.3%
Total:	100.0%

Efficacia (2013-2017)



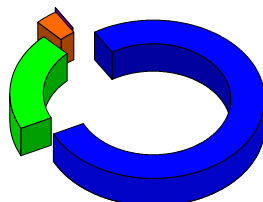
<i>Edifici Residenziali</i>	Lden < 55 Esterno a.m.	Lden < 55 Interno a.m.	Lden > 55	Lden > 65	Lden >75
Anno 2013	16711	4353	768	38	0
Anno 2017	16711	4419	702	28	0
Efficacia (2013-2017)	0	-66	66	10	0

Anno 2013



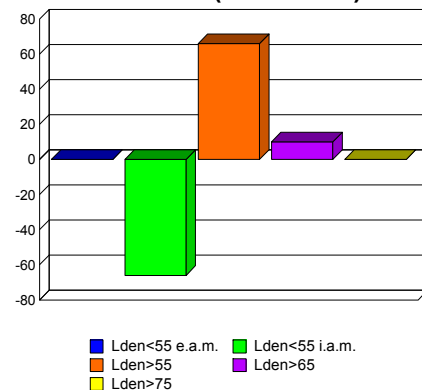
Lden<55 e.a.m.	76.5%
Lden<55 i.a.m.	19.9%
Lden>55	3.3%
Lden>65	0.2%
Lden>75	0.0%
Total:	100.0%

Anno 2017



Lden<55 e.a.m.	76.5%
Lden<55 i.a.m.	20.2%
Lden>55	3.1%
Lden>65	0.1%
Lden>75	0.0%
Total:	100.0%

Efficacia (2013-2017)

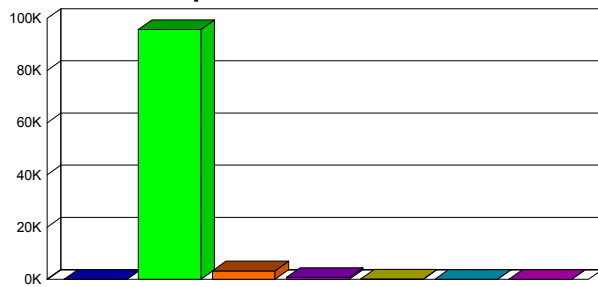




COMUNE DI IMPERIA

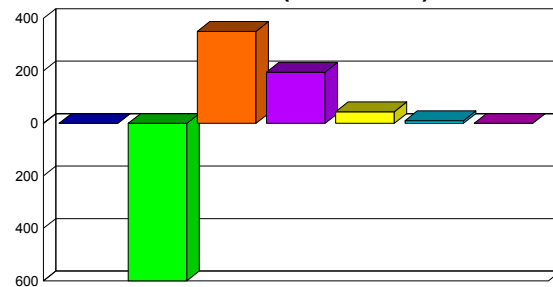
<i>Popolazione esposta per classi di Lden</i>	Lden < 55 Esterno a.m.	Lden < 55 Interno a.m.	55-59	60-64	65-69	70-75	>75
Anno 2013	-	95103	3635	944	177	20	0
Anno 2017	-	95703	3284	749	133	10	0
Efficacia (2013-2017)	-	-600	351	195	44	10	0

Popolazione Anno 2013



■ Lden<55 e.a.m. ■ Lden<55 i.a.m. ■ 55-59
■ 60-64 ■ 65-69 ■ 70-75
■ >75

Efficacia (2013-2017)



■ Lden<55 e.a.m. ■ Lden<55 i.a.m. ■ 55-59
■ 60-64 ■ 65-69 ■ 70-75
■ >75

**Popolazione in edifici
con facciate silenziose**

	55-59	60-64	65-69	70-75	>75
Anno 2013	0	0	0	0	0
Anno 2017	0	0	0	0	0
Efficacia (2013-2017)	0	0	0	0	0

**Popolazione in edifici
con insonorizzazione**

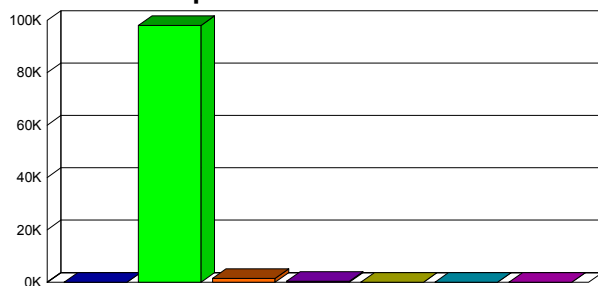
	55-59	60-64	65-69	70-75	>75
Anno 2013	0	0	0	0	0
Anno 2017	0	0	0	0	0
Efficacia (2013-2017)	0	0	0	0	0



COMUNE DI IMPERIA

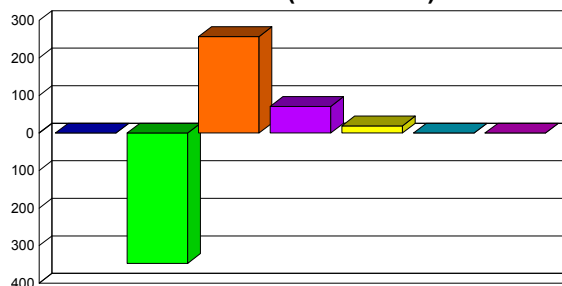
<i>Popolazione esposta per classi di Lnight</i>	Lnight < 50 Esterno a.m.	Lnight < 50 Interno a.m.	50-54	55-59	60-64	65-69	>70
Anno 2013	-	97686	1721	430	42	0	0
Anno 2017	-	98033	1464	359	23	0	0
Efficacia (2013-2017)	-	-347	257	71	19	0	0

Popolazione Anno 2013



■ Lnight<50 e.a.m. ■ Lnight<50 i.a.m. ■ 50-54
 ■ 55-59 ■ 60-64 ■ 65-69
 ■ >70

Efficacia (2013-2017)



■ Lnight<50 e.a.m. ■ Lnight<50 i.a.m. ■ 50-54
 ■ 55-59 ■ 60-64 ■ 65-69
 ■ >70

*Popolazione in edifici
con facciate silenziose*

	50-54	55-59	60-64	65-69	>70
Anno 2013	154	45	0	0	0
Anno 2017	71	32	0	0	0
Efficacia (2013-2017)	83	13	0	0	0

*Popolazione in edifici
con insonorizzazione*

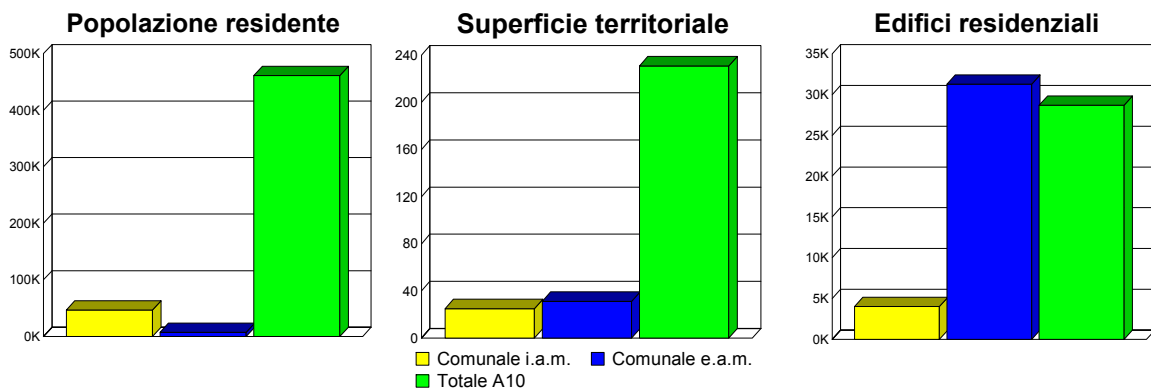
	50-54	55-59	60-64	65-69	>70
Anno 2013	0	0	0	0	0
Anno 2017	0	0	0	0	0
Efficacia (2013-2017)	0	0	0	0	0



COMUNE DI SAN REMO

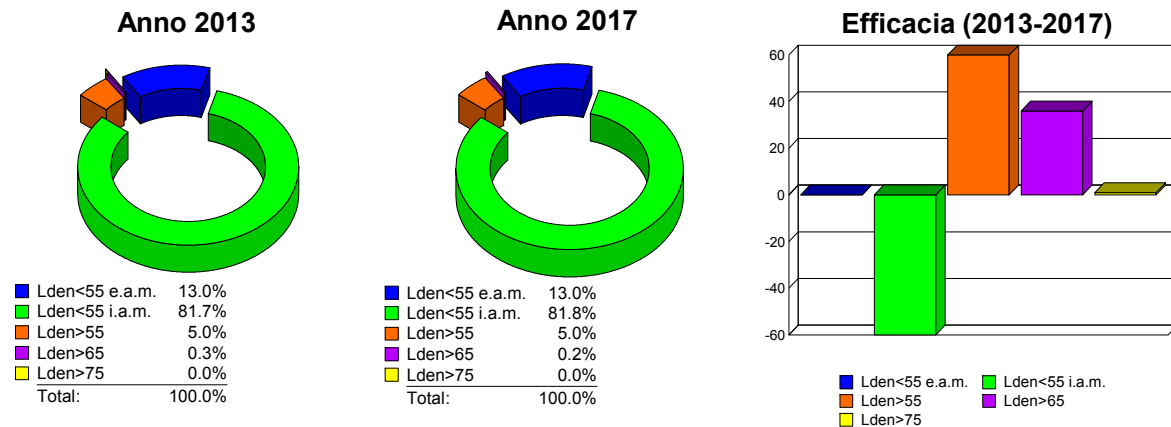
Sintesi Territoriale

	Territorio comunale Interno ambito di mappatura	Territorio comunale Esterno ambito di mappatura	Autostrada A10 Interno ambito di mappatura
Popolazione residente	46655	6962	461455
Superficie territoriale [km2]	24.892	31.067	230.886
Edifici residenziali	4029	31297	28697



Efficacia del piano d'azione

Popolazione Esposta	Lden < 55 Esterno a.m.	Lden < 55 Interno a.m.	Lden > 55	Lden > 65	Lden > 75
Anno 2013	6962	43814	2841	136	1
Anno 2017	6962	43874	2781	100	0
Efficacia (2013-2017)	-	-60	60	36	1

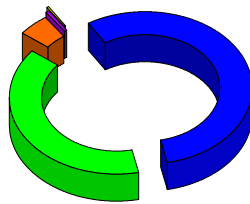




COMUNE DI SAN REMO

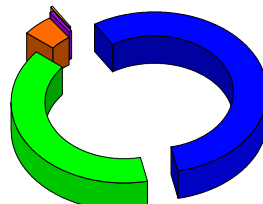
<i>Superficie Territoriale</i>	Lden < 55 Esterno a.m.	Lden < 55 Interno a.m.	Lden > 55	Lden > 65	Lden >75
Anno 2013	31.067	21.818	3.074	0.482	0.137
Anno 2017	31.067	21.900	2.992	0.471	0.135
Efficacia (2013-2017)	0	-0.082	0.082	0.011	0.002

Anno 2013



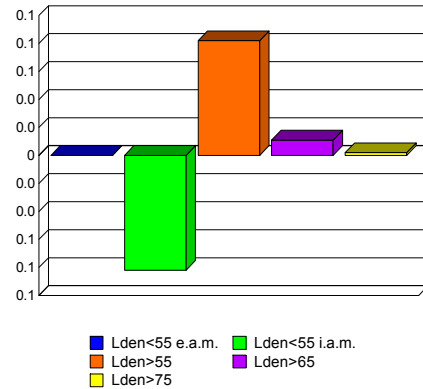
Lden<55 e.a.m.	55.5%
Lden<55 i.a.m.	39.0%
Lden>55	4.6%
Lden>65	0.6%
Lden>75	0.2%
Total:	100.0%

Anno 2017



Lden<55 e.a.m.	55.5%
Lden<55 i.a.m.	39.1%
Lden>55	4.5%
Lden>65	0.6%
Lden>75	0.2%
Total:	100.0%

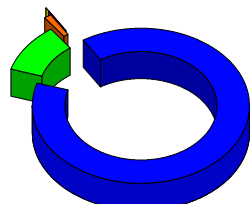
Efficacia (2013-2017)



*Edifici
Residenziali*

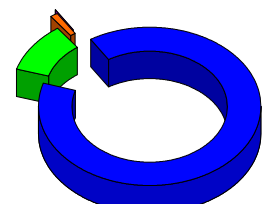
<i>Edifici Residenziali</i>	Lden < 55 Esterno a.m.	Lden < 55 Interno a.m.	Lden > 55	Lden > 65	Lden >75
Anno 2013	31297	3600	429	24	1
Anno 2017	31297	3607	422	18	0
Efficacia (2013-2017)	0	-7	7	6	1

Anno 2013



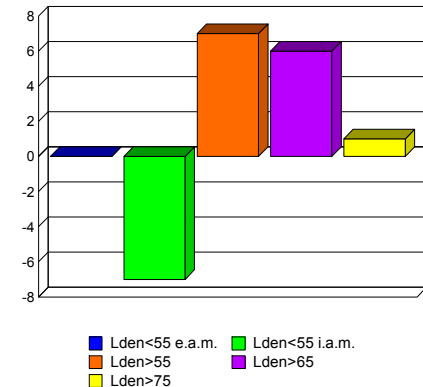
Lden<55 e.a.m.	88.6%
Lden<55 i.a.m.	10.2%
Lden>55	1.1%
Lden>65	0.1%
Lden>75	0.0%
Total:	100.0%

Anno 2017



Lden<55 e.a.m.	88.6%
Lden<55 i.a.m.	10.2%
Lden>55	1.1%
Lden>65	0.1%
Lden>75	0.0%
Total:	100.0%

Efficacia (2013-2017)

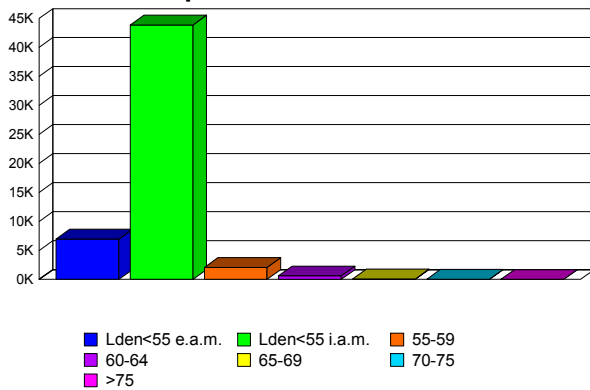




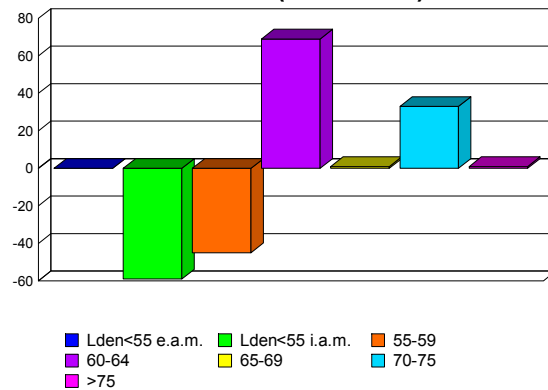
COMUNE DI SAN REMO

<i>Popolazione esposta per classi di Lden</i>	Lden < 55 Esterno a.m.	Lden < 55 Interno a.m.	55-59	60-64	65-69	70-75	>75
Anno 2013	6962	43814	2031	674	86	49	1
Anno 2017	6962	43873	2076	605	85	16	0
Efficacia (2013-2017)	-	-59	-45	69	1	33	1

Popolazione Anno 2013



Efficacia (2013-2017)



**Popolazione in edifici
con facciate silenti**

	55-59	60-64	65-69	70-75	>75
Anno 2013	0	0	0	0	0
Anno 2017	0	0	0	0	0
Efficacia (2013-2017)	0	0	0	0	0

**Popolazione in edifici
con insonorizzazione**

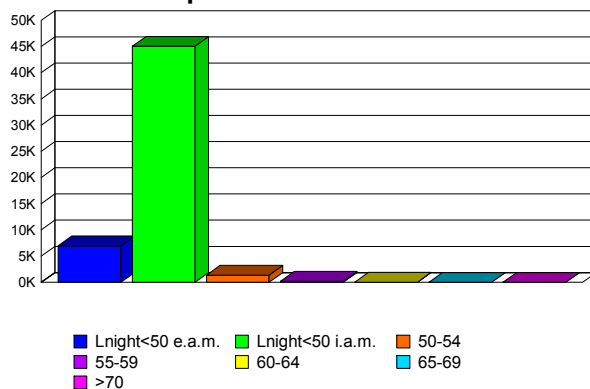
	55-59	60-64	65-69	70-75	>75
Anno 2013	0	0	0	0	0
Anno 2017	0	0	0	0	0
Efficacia (2013-2017)	0	0	0	0	0



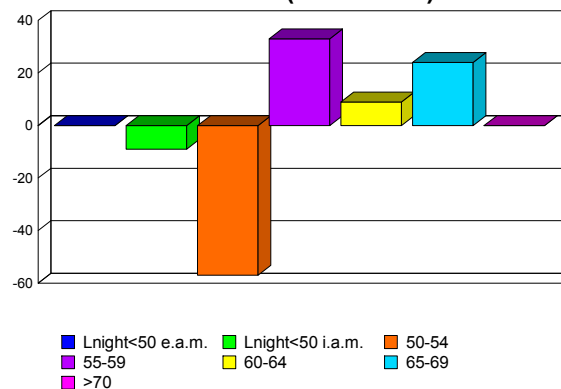
COMUNE DI SAN REMO

<i>Popolazione esposta per classi di Lnight</i>	Lnight < 50 Esterno a.m.	Lnight < 50 Interno a.m.	50-54	55-59	60-64	65-69	>70
Anno 2013	6962	45059	1307	230	35	24	0
Anno 2017	6962	45068	1364	197	26	0	0
Efficacia (2013-2017)	-	-9	-57	33	9	24	0

Popolazione Anno 2013



Efficacia (2013-2017)



*Popolazione in edifici
con facciate silenziose*

	50-54	55-59	60-64	65-69	>70
Anno 2013	94	50	10	9	0
Anno 2017	131	22	0	0	0
Efficacia (2013-2017)	-37	28	10	9	0

*Popolazione in edifici
con insonorizzazione*

	50-54	55-59	60-64	65-69	>70
Anno 2013	0	0	0	0	0
Anno 2017	0	0	0	0	0
Efficacia (2013-2017)	0	0	0	0	0

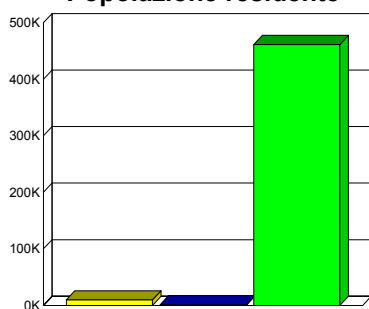


COMUNE DI BORDIGHERA

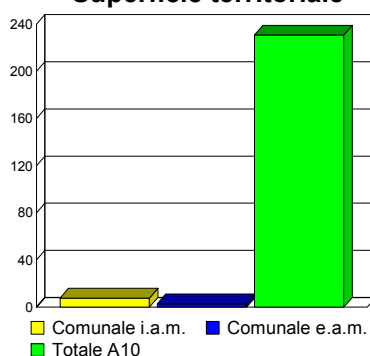
Sintesi Territoriale

	Territorio comunale Interno ambito di mappatura	Territorio comunale Esterno ambito di mappatura	Autostrada A10 Interno ambito di mappatura
Popolazione residente	9707	774	461455
Superficie territoriale [km2]	7.737	2.908	230.886
Edifici residenziali	816	8763	28697

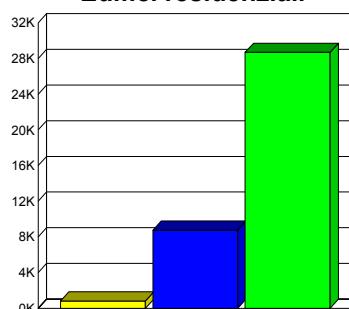
Popolazione residente



Superficie territoriale



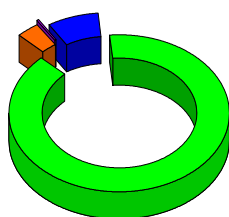
Edifici residenziali



Efficacia del piano d'azione

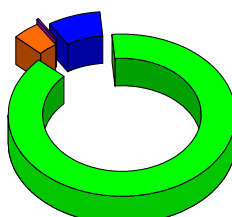
Popolazione Esposta	Lden < 55 Esterno a.m.	Lden < 55 Interno a.m.	Lden > 55	Lden > 65	Lden > 75
Anno 2013	774	9332	375	22	0
Anno 2017	774	9269	438	17	0
Efficacia (2013-2017)	-	63	-63	5	0

Anno 2013



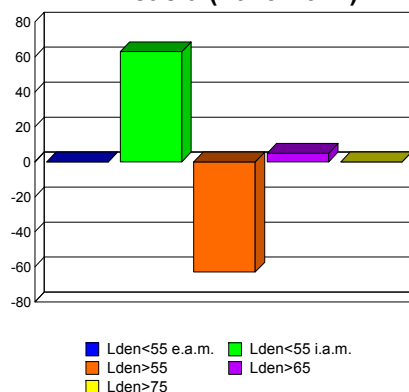
Lden<55 e.a.m.	7.4%
Lden<55 i.a.m.	89.0%
Lden>55	3.4%
Lden>65	0.2%
Lden>75	0.0%
Total:	100.0%

Anno 2017



Lden<55 e.a.m.	7.4%
Lden<55 i.a.m.	88.4%
Lden>55	4.0%
Lden>65	0.2%
Lden>75	0.0%
Total:	100.0%

Efficacia (2013-2017)



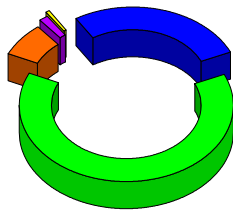
Lden<55 e.a.m.	Lden<55 i.a.m.
Lden>55	Lden>65
Lden>75	



COMUNE DI BORDIGHERA

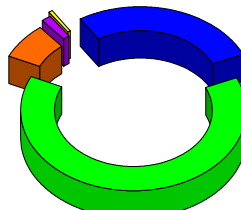
<i>Superficie Territoriale</i>	Lden < 55 Esterno a.m.	Lden < 55 Interno a.m.	Lden > 55	Lden > 65	Lden >75
Anno 2013	2.908	6.750	0.987	0.206	0.059
Anno 2017	2.908	6.756	0.981	0.202	0.059
Efficacia (2013-2017)	0	-0.006	0.006	0.004	0

Anno 2013



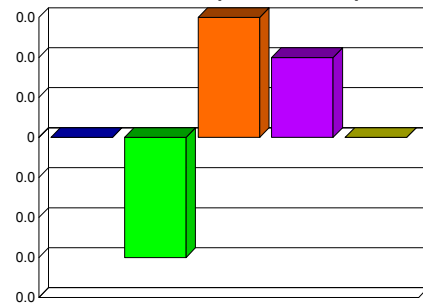
Lden<55 e.a.m.	27.3%
Lden<55 i.a.m.	63.4%
Lden>55	7.3%
Lden>65	1.4%
Lden>75	0.6%
Total:	100.0%

Anno 2017



Lden<55 e.a.m.	27.3%
Lden<55 i.a.m.	63.5%
Lden>55	7.3%
Lden>65	1.3%
Lden>75	0.6%
Total:	100.0%

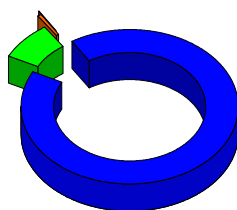
Efficacia (2013-2017)



Lden<55 e.a.m.	Lden<55 i.a.m.
Lden>55	Lden>65
Lden>75	

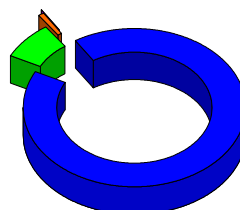
<i>Edifici Residenziali</i>	Lden < 55 Esterno a.m.	Lden < 55 Interno a.m.	Lden > 55	Lden > 65	Lden >75
Anno 2013	8763	752	64	5	0
Anno 2017	8763	744	72	4	0
Efficacia (2013-2017)	0	8	-8	1	0

Anno 2013



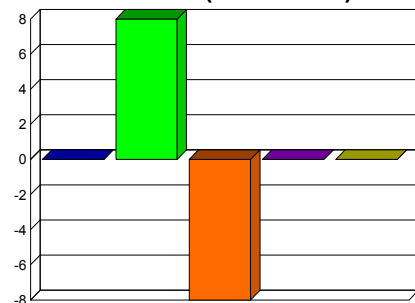
Lden<55 e.a.m.	91.5%
Lden<55 i.a.m.	7.9%
Lden>55	0.6%
Lden>65	0.1%
Lden>75	0.0%
Total:	100.0%

Anno 2017



Lden<55 e.a.m.	91.5%
Lden<55 i.a.m.	7.8%
Lden>55	0.7%
Lden>65	0.1%
Lden>75	0.0%
Total:	100.0%

Efficacia (2013-2017)



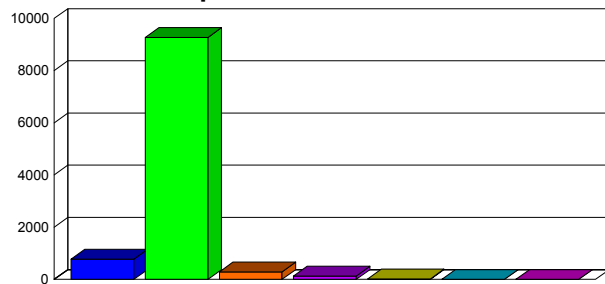
Lden<55 e.a.m.	Lden<55 i.a.m.
Lden>55	Lden>65
Lden>75	



COMUNE DI BORDIGHERA

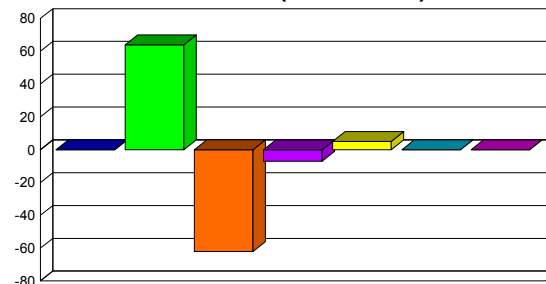
<i>Popolazione esposta per classi di Lden</i>	Lden < 55 Esterno a.m.	Lden < 55 Interno a.m.	55-59	60-64	65-69	70-75	>75
Anno 2013	774	9332	228	125	22	0	0
Anno 2017	774	9268	290	132	17	0	0
Efficacia (2013-2017)	-	64	-62	-7	5	0	0

Popolazione Anno 2013



■ Lden<55 e.a.m. ■ Lden<55 i.a.m. ■ 55-59
 ■ 60-64 ■ 65-69 ■ 70-75
 ■ >75

Efficacia (2013-2017)



■ Lden<55 e.a.m. ■ Lden<55 i.a.m. ■ 55-59
 ■ 60-64 ■ 65-69 ■ 70-75
 ■ >75

<i>Popolazione in edifici con facciate silenziose</i>	55-59	60-64	65-69	70-75	>75
Anno 2013	0	0	0	0	0
Anno 2017	0	0	0	0	0
Efficacia (2013-2017)	0	0	0	0	0

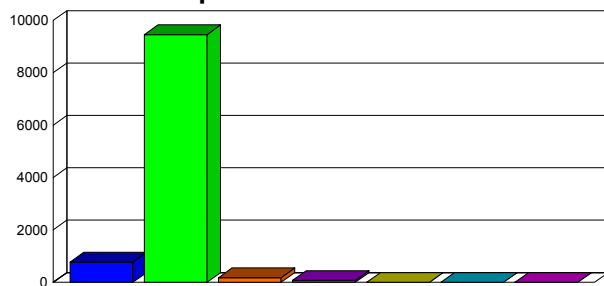
<i>Popolazione in edifici con insonorizzazione</i>	55-59	60-64	65-69	70-75	>75
Anno 2013	0	0	0	0	0
Anno 2017	0	0	0	0	0
Efficacia (2013-2017)	0	0	0	0	0



COMUNE DI BORDIGHERA

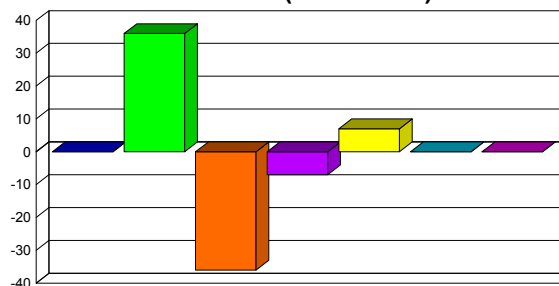
<i>Popolazione esposta per classi di Lnight</i>	Lnight < 50 Esterno a.m.	Lnight < 50 Interno a.m.	50-54	55-59	60-64	65-69	>70
Anno 2013	774	9490	144	66	7	0	0
Anno 2017	774	9454	180	73	0	0	0
Efficacia (2013-2017)	-	36	-36	-7	7	0	0

Popolazione Anno 2013



■ Lnight<50 e.a.m. ■ Lnight<50 i.a.m. ■ 50-54
 ■ 55-59 ■ 60-64 ■ 65-69
 ■ >70

Efficacia (2013-2017)



■ Lnight<50 e.a.m. ■ Lnight<50 i.a.m. ■ 50-54
 ■ 55-59 ■ 60-64 ■ 65-69
 ■ >70

*Popolazione in edifici
con facciate silenziose*

	50-54	55-59	60-64	65-69	>70
Anno 2013	108	43	0	0	0
Anno 2017	17	6	0	0	0
Efficacia (2013-2017)	91	37	0	0	0

*Popolazione in edifici
con insonorizzazione*

	50-54	55-59	60-64	65-69	>70
Anno 2013	0	0	0	0	0
Anno 2017	0	0	0	0	0
Efficacia (2013-2017)	0	0	0	0	0